

Doc. Identity	Rev	Lg	Kind	Reference Des.	Type	Title	Customer's Doc. Identity	File	Rev.
3ABDC080069-RT/1	A		EFS2	=15, +15.1	Product circuit diagram	ACS800-107 Drive Unit Charging circuit Charging fuse switch 2xR8i		=15-1	
3ABDC080069-RT/2	A		EFS2	=15, +15.1	Product circuit diagram	ACS800-107 Drive Unit 2xR8i Switch fuse Common motor terminals		=15-2	
3ABDC080069-RT/10	A		EFS2	=15, +14.2	Product circuit diagram	ACS800-107 Drive Unit R8i-6xR8i, UPS Switch fuse		=15-10	
3ABDC080069-RT/12	A		EFS2	=15, +15	Product circuit diagram	ACS800-107 Drive Unit 2xR8i Fan unit		=15-12	
3ABDC080069-RT/13	A		EFS2	=15, +14.2	Product circuit diagram	ACS800-107 Drive Unit R8i-3xR8i Fan control relays		=15-13	
3ABDC080069-RT/17	A		EFS2	=15, +14.2	Product circuit diagram	ACS800-107 Drive Unit 2-12xR8i RMIO-02 CDP+NLMD+RDCO-0X+RAPI		=15-17	
3ABDC080069-RT/18	A		EFS2	=15, +14.2	Product circuit diagram	ACS800-107 Drive Unit R8i-1-3xR8i -X2 OESA		=15-18	

Based on	Prepared	2/3/2008	Guohua Hui
Replaces	Approved	2/3/2008	LI Shipping
Replaced by			
Standard			
Type code		3ABDC080069-RT-D	
Rev. Ind.		1	
Lang.		Sheet	
		of	
ABB ABB Drives			

Doc. Identity	Rev	Lg	Kind	Reference Des.	Type	Title	Customer's Doc. Identity	File	Rev.
3ABDC080069-RT/19	A		EFS2	=15, +14.2	Product circuit diagram	ACS800-107 Drive Unit PPCS Branching unit APBU-44, -A415, 4 units		=15-19	
3ABDC080069-RT/20	A		EFS2	=15, +14.2	Product circuit diagram	ACS800-107 Drive Unit Profibus Adapter RPBA-01, Option 1		=15-20	
3ABDC080069-RT/21	A		EFS2	=15, +14.2	Product circuit diagram	ACS800-107 Drive Unit Pulse Encoder Interface RTAG-01, Option 2		=15-21	

Based on
Replaces
Replaced by
Standard

Prepared 2/3/2008
Approved 2/3/2008

Guohua Hui
Li Shipping

Type code
3ABDC080069-RT-D

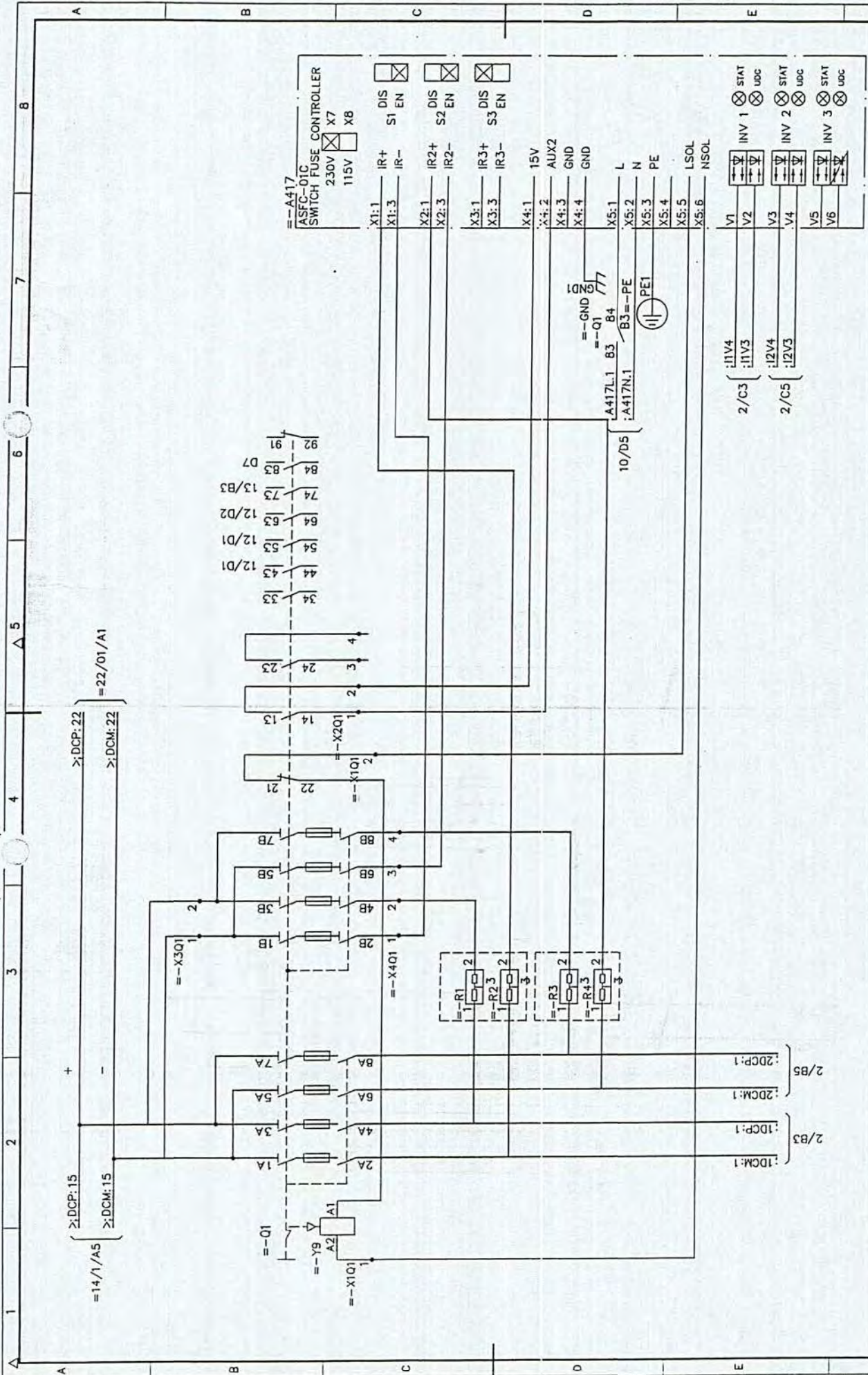
Rev. Ind.

Lang.

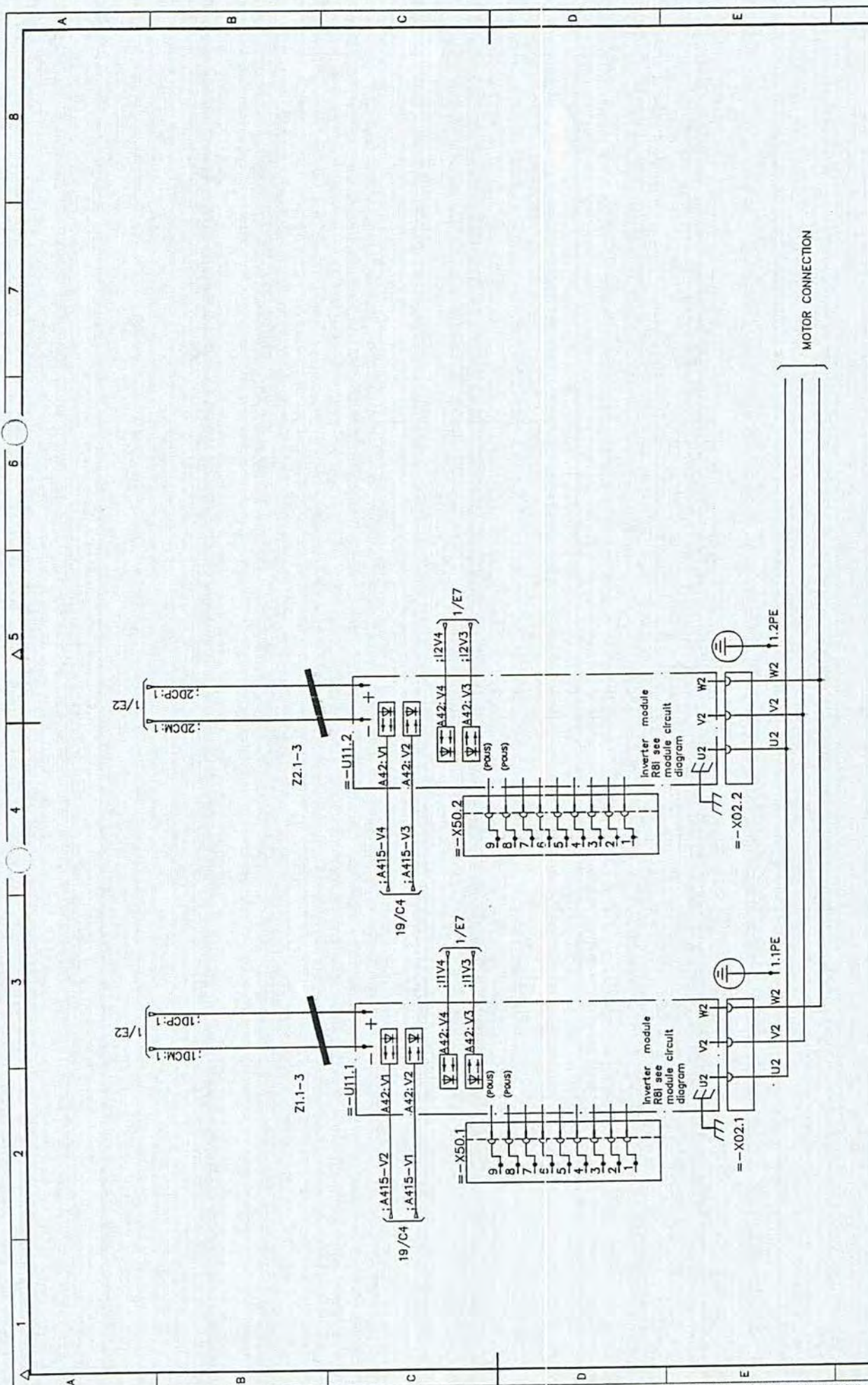
Sheet
of

ABB ABB Drives

2
2

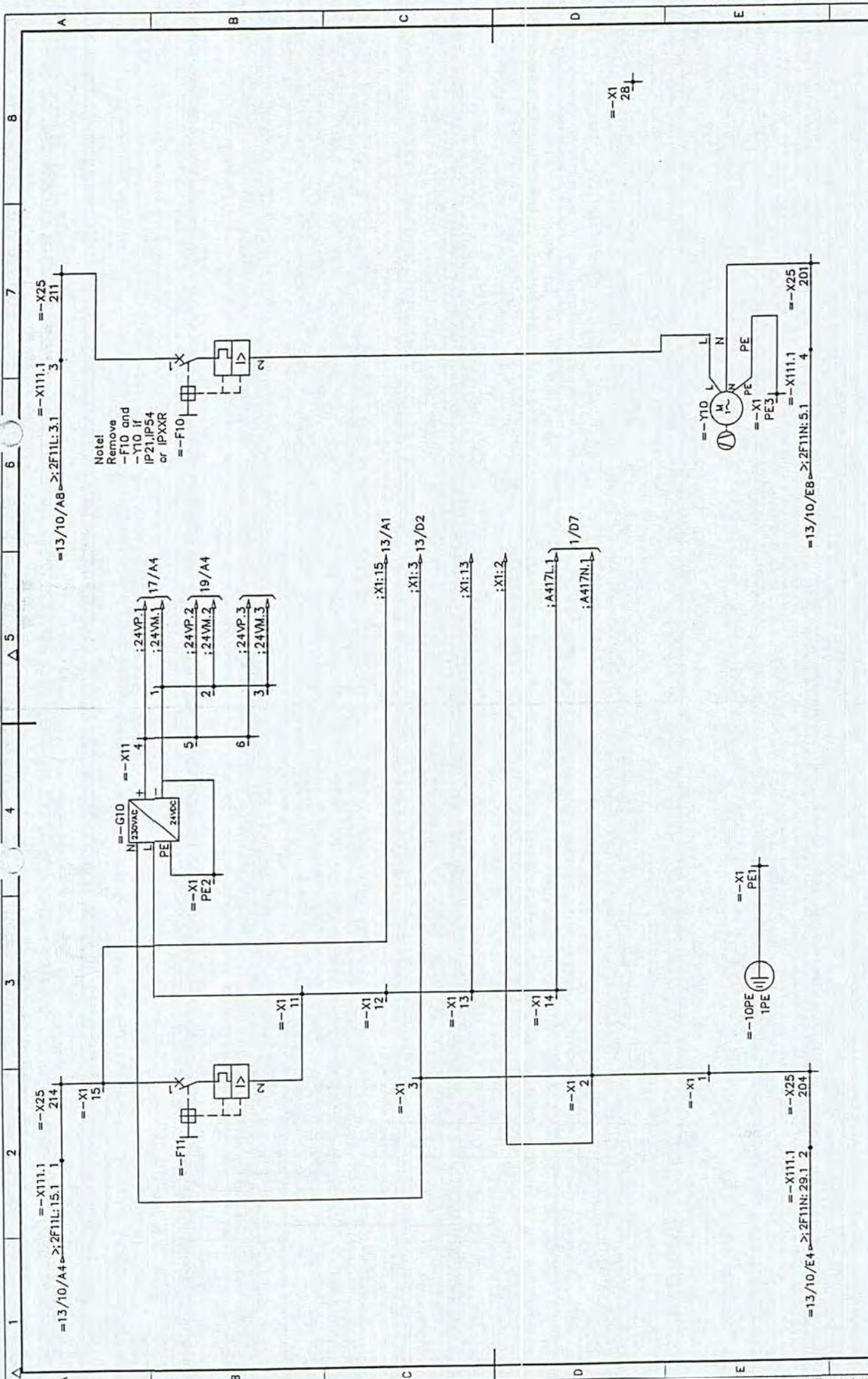


Cust. Doc. No.	Prepared 02.02.2008	Title ACS800-107 Drive Unit		Item des. =15
Customer	Hui Guohua	Charging circuit		+15.1
Project	Li Shipping	Charging fuse switch 2xR8i		Rev.ind. A
ABB Ref. No.		ABB ABB DRIVES		Lang.
		Doc. No. 3ABDC080069-RT		Sheet
				Cont.
				1
				2

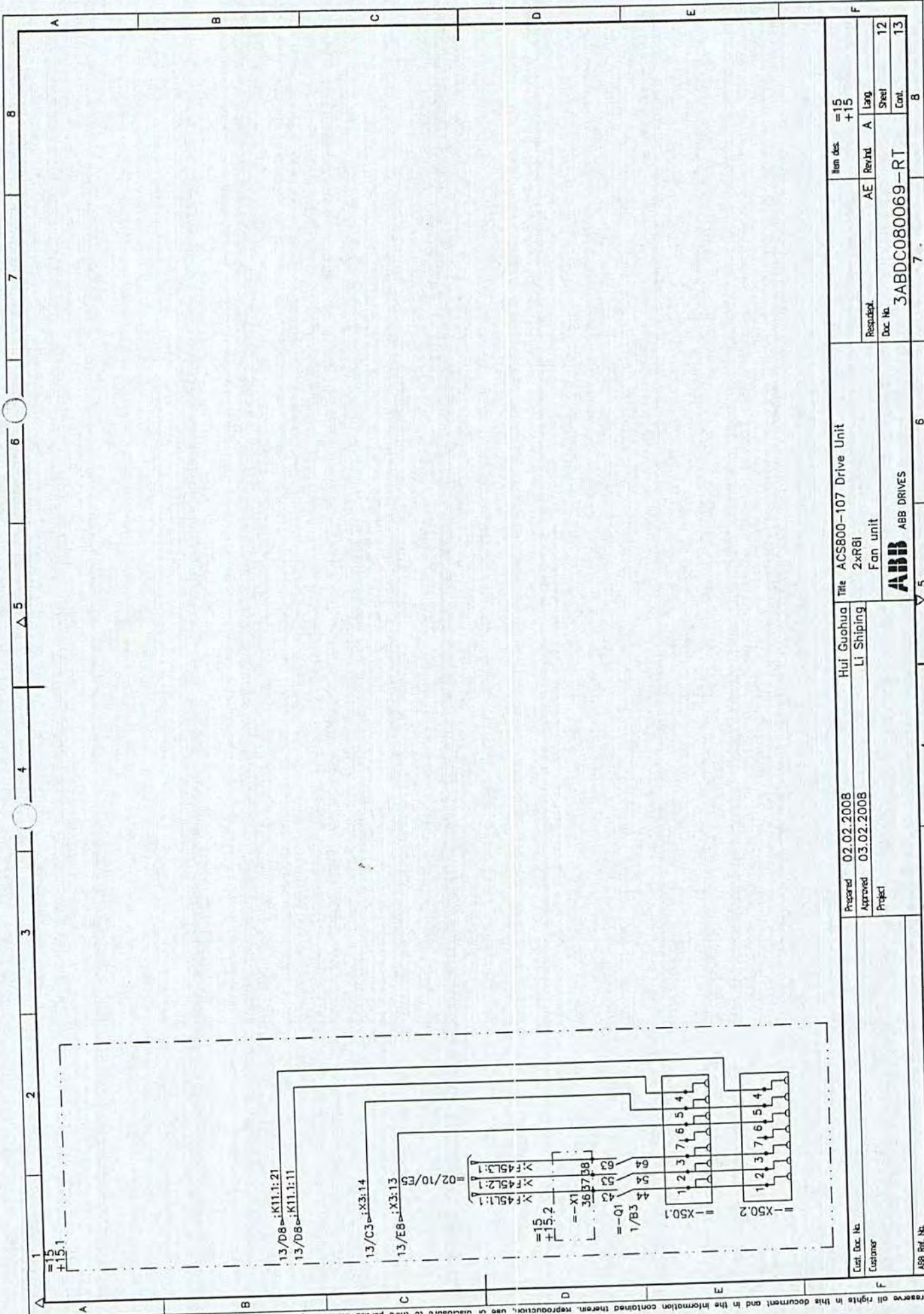


MOTOR CONNECTION

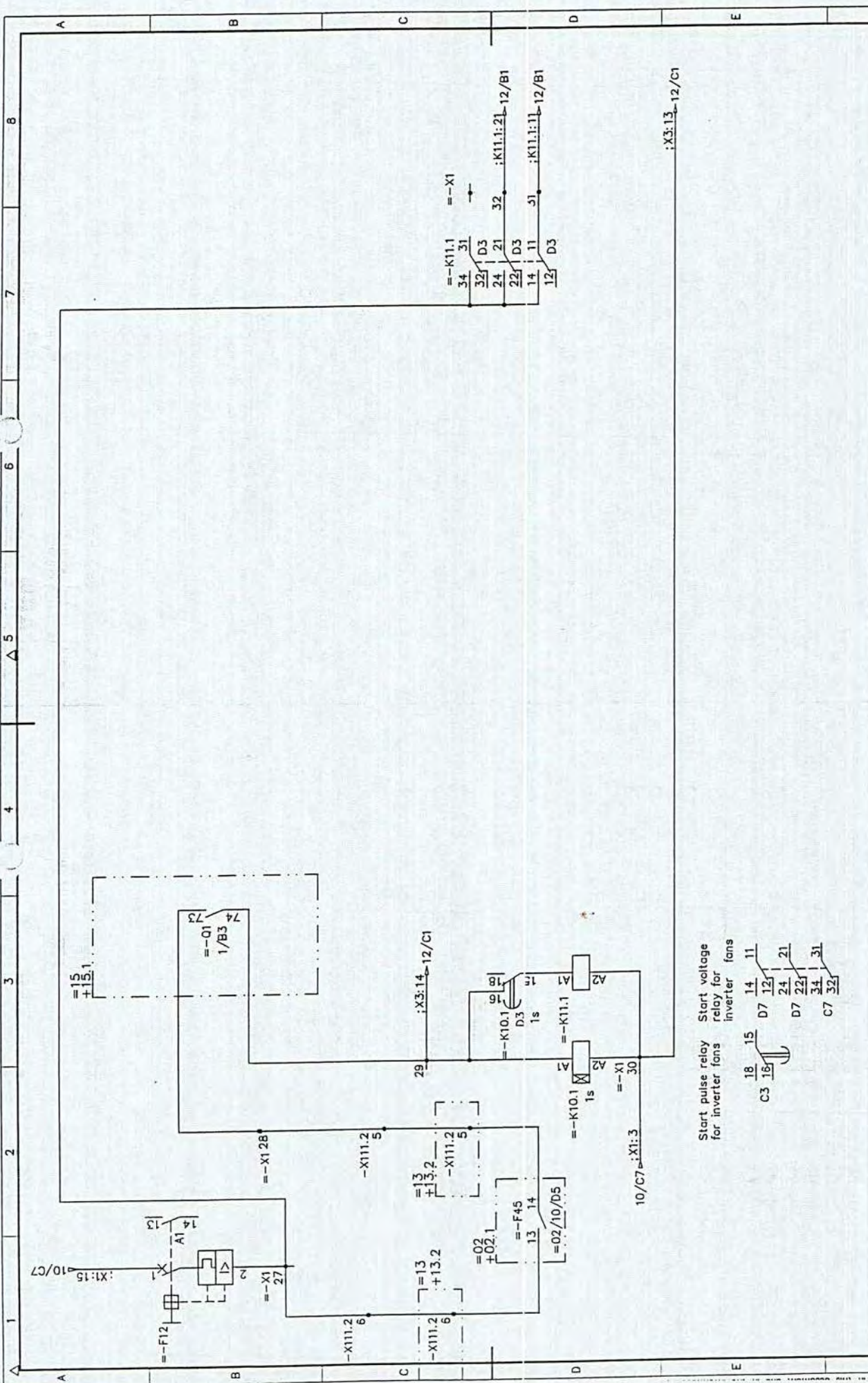
Client, Doc. No.	Prepared	02.02.2008	Hui Guohua	Title	ACS800-107 Drive Unit	Item des.	=15
Customer	Approved	03.02.2008	Li Shipping		2xR8I Switch fuse	+15.1	
ABB Ref. No.	Project			Common motor terminals			
				ABB ABB DRIVES			
					Doc. No.	3ABDC080069-RT	
					Responsible	AE	Rev'd
						A	Larg
							Sheet
							Cont.
							10



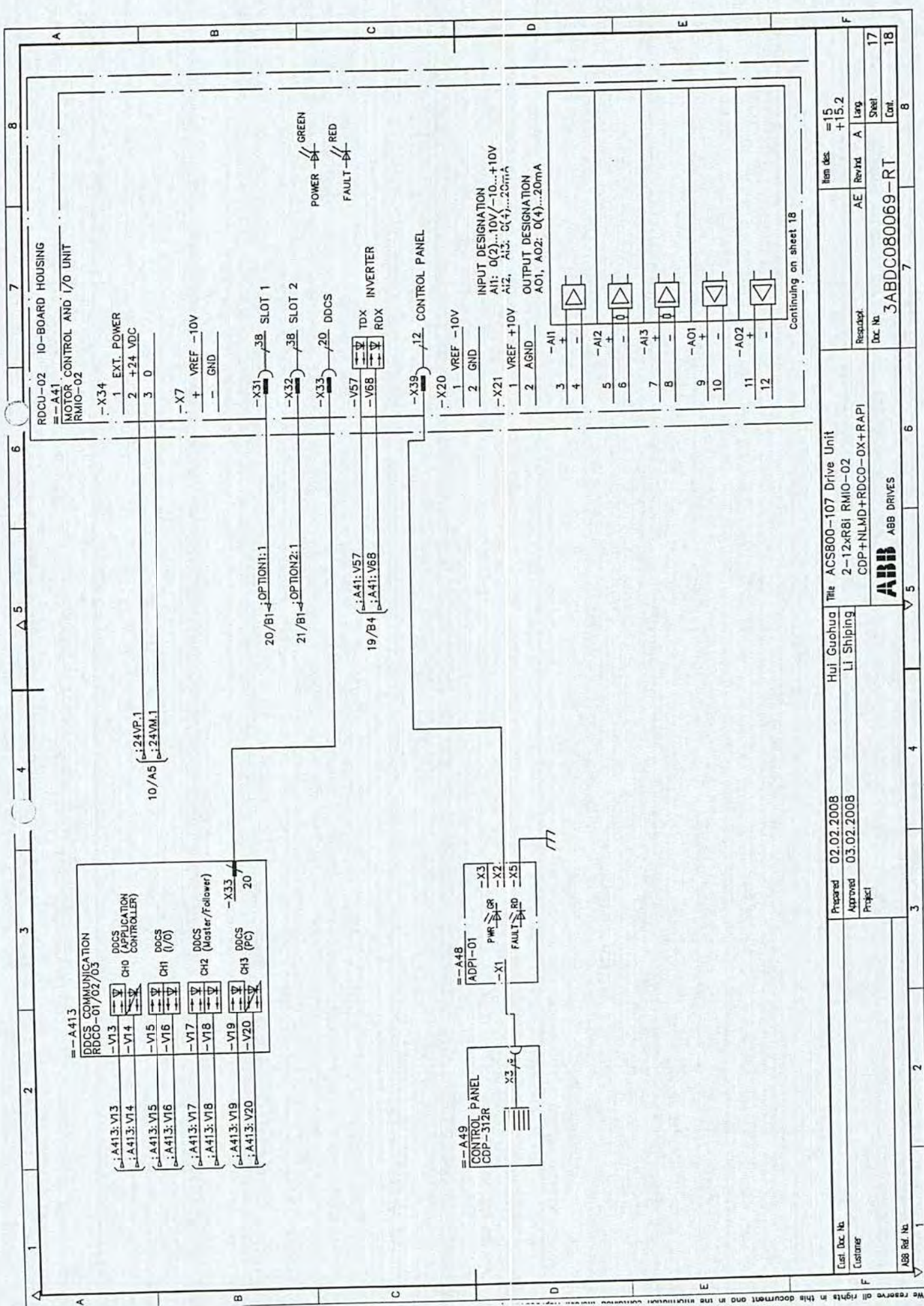
Cust. Doc. No. Customer	Prepared 02.02.2008 Approved 03.02.2008 Project	Hui Guohua LI Shipping	Title ACS800-107 Drive Unit R8I-6XR8I, UPS Switch, fuse	Item des. =15 +15.2
ABB Ref. No.	Resubmitt AE Rev'd A Lang			Doc. No. 3ABDC080069-RT
1	3	4	6	8
A	2	5	7	12



Prepared	02.02.2008	Hui Guohua	Title	ACS800-107 Drive Unit	Item des.	=15
Approved	03.02.2008	Li Shipping	2xR81	Rev/nd	A	+15
Project			Fan unit	Doc No.	3ABDC080069-RT	
Customer			ABB ABB DRIVES	Sheet	12	
ABB Ref. No.				Cont.	13	



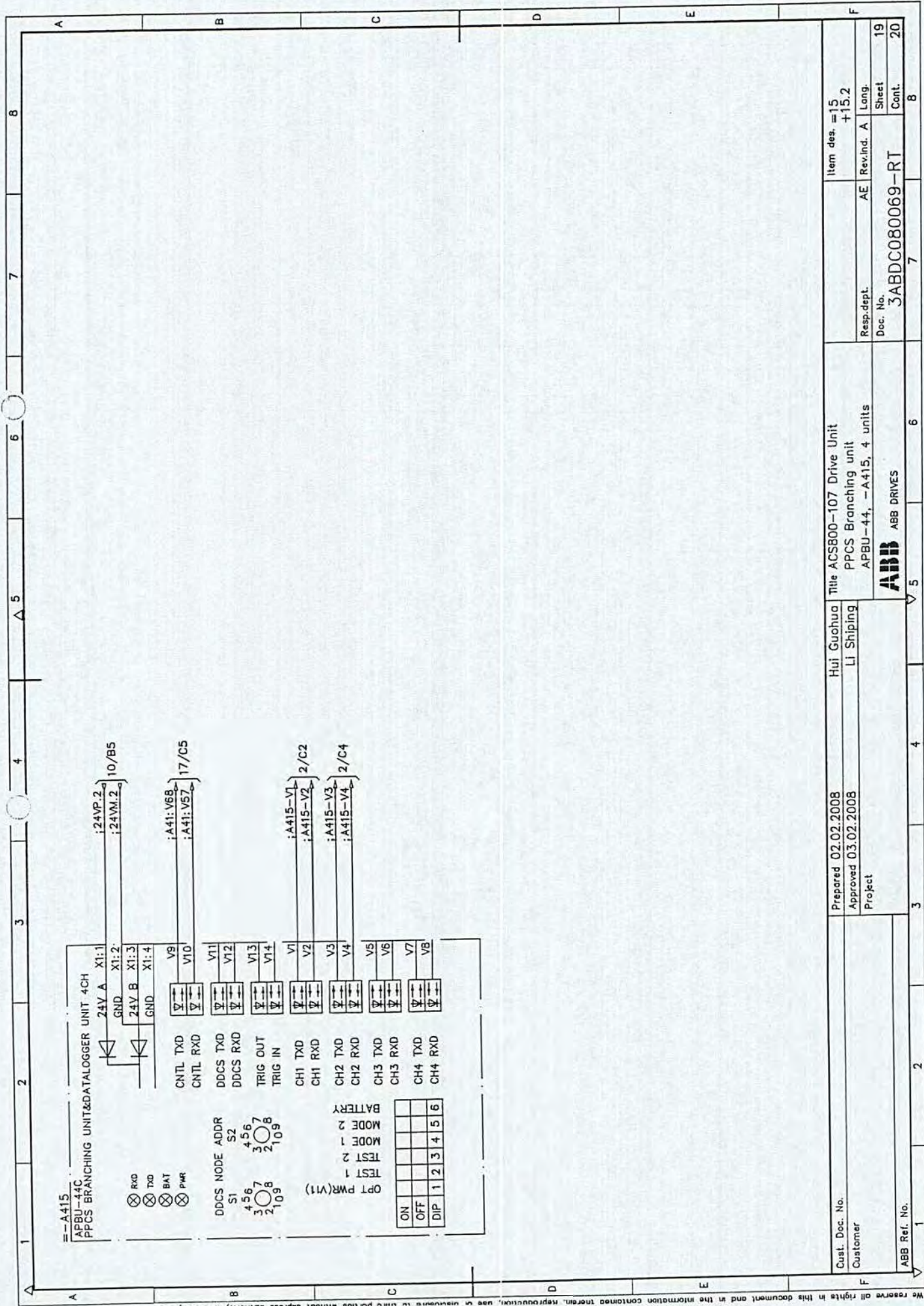
Cust. Doc. No.	Customer	Prepared	02.02.2008	Hui Guohua	ACS800-107 Drive Unit	Item Nos.	=15 +15.2
Customer	LI Shipping	Approved	03.02.2008	LI Shipping	R8I-3xR8I Fan control relays	Rev'd	A
ABB Ref. No.	ABB DRIVES	Project	ABB	Doc. No.	3ABDC080069-RT	Larg	A
						Sheet	13
						Cont.	17



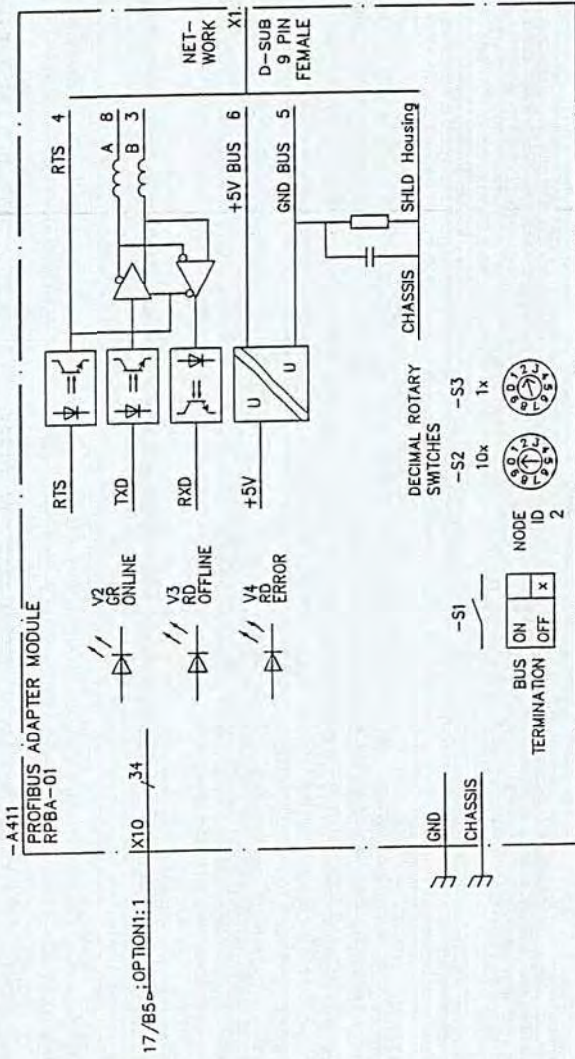
Continuing on sheet 18

Item des	=15
	+15.2
Respart	AE Rev'd A Lng
Doc No	3ABDC080069-RT
Sheet	17
Cont.	18

Customer	Hui Guohua	Title	ACS800-107 Drive Unit
Prepared	02.02.2008		2-12xR61 RMIO-02
Approved	03.02.2008		CDP+NLMD+RDCO-0X+RAPI
Project			ABB ABB DRIVES



Cust. Doc. No.		Prepared 02.02.2008		Hui Guohua		Title ACS800-107 Drive Unit		Item des. =15	
Customer		Approved 03.02.2008		Li Shiping		PPCS Branching unit		+15.2	
ABB Ref. No.		Project		ABB ABB DRIVES		APBU-44, -A415, 4 units		Rev.ind. A Long.	
				3		6		7	
				4		5		8	
				2		1		19	
				1		20		Sheet	
				3ABDC080069-RT		Doc. No.		Cont.	



--A411
PROFIBUS ADAPTER MODULE
RPBA-01

17/B5-:OPTION1:1

1	2	3	4	5	6	7	8
Cust. Doc. No. Customer		Prepared 02.02.2008 Approved 03.02.2008 Project		Title ACS800-107 Drive Unit Profibus Adapter RPBA-01, Option 1		Item Nos. =15 +15.2	
ABB Ref. No.		Hui Guohua Li Shipping		Resubst. AE Rev/d A		Larg. A	
		ABB DRIVES		Doc. No. 3ABDC080069-RT		Sheet 20 Cont. 21	

To Designation			Terminal bar			From Designation			Document ref.			Rev. No.			
Loc.	Fun.	Prod	Term	Core	Cable/Wire	L	Designation	Term	Core	Cable/Wire	L	Designation	Term	Prod.	Doc. No.
+14.2	=14	=14-X25	20/4		H05V-K/BU/1.0	A	=15-X1	1		/	A				3ABDC080069-RT/10
					/	B	=15-X1	2		/	A				3ABDC080069-RT/10
					/	B	=15-X1	2	+15.1	H05V-K/BK/1.0	A		X5:2		3ABDC080069-RT/10
+14.2	=15	=15-X1	30/3		H05V-K/BU/1.0	B	=15-X1	3	+14.2	H05V-K/BU/1.0	B		N		
					/	C	=15-X1	11	+14.2	H05V-K/BK/1.0	C		2		3ABDC080069-RT/10
					/	C	=15-X1	11	+14.2	H05V-K/BK/1.0	C		L		3ABDC080069-RT/10
					/	C	=15-X1	12		/	D				3ABDC080069-RT/10
					/	E	=15-X1	13		/	D				3ABDC080069-RT/10
					/	E	=15-X1	14	+15.1	H05V-K/BK/1.0	E		83		
					H07V-K/BK/6.0		=15-X1	15	+14.2	H07V-K/BK/6.0			1		3ABDC080069-RT/10
+14.2	=15	=15-F12	1		H07V-K/BK/6.0		=15-X1	15	+14.2	H05V-K/BK/1.0			214/4		3ABDC080069-RT/10
					H05V-K/BK/1.0		=15-X1	27	+14.2	H05V-K/BK/1.0			2		3ABDC080069-RT/13
+02.1	=02	=02-F45	13		H05V-K/BK/1.0		=15-X1	27	+14.2	H05V-K/BK/1.0			14		3ABDC080069-RT/13
+14.2	=14	=14-X11.2	5/2		H05V-K/BK/1.0		=15-X1	28	+15.1	H05V-K/BK/1.0			73		3ABDC080069-RT/13
+15.1	=15	=15-X60.1	5/2		H05V-K/BK/1.0		=15-X1	29	+15.1	H05V-K/BK/1.0			74		
+14.2	=15	=15-K10.1	A1		H05V-K/BK/1.0		=15-X1	29		/					
+14.2	=15	=15-K11.1	A2		H05V-K/BU/1.0		=15-X1	30	+15.1	H05V-K/BU/1.0			6/2		3ABDC080069-RT/13
+14.2	=15	=15-K10.1	A2		H05V-K/BU/1.0		=15-X1	30	+14.2	H05V-K/BU/1.0			3/4		3ABDC080069-RT/13
+14.2	=15	=15-K11.1	11		H05V-K/BK/1.0		=15-X1	31	+15.1	H05V-K/BK/1.0			4/2		3ABDC080069-RT/13
+14.2	=15	=15-K11.1	21		H05V-K/BK/1.0		=15-X1	32	+15.1	H05V-K/BK/1.0			4/2		3ABDC080069-RT/13
+14.2	=14	=14-X125.1	4/1		H05V-K/BK/1.0		=15-X1	36	+15.1	H05V-K/BK/1.0			1/2		3ABDC080069-RT/12
					H05V-K/BK/1.0		=15-X1	36	+15.1	H05V-K/BK/1.0			44		3ABDC080069-RT/12
					H05V-K/BK/1.0		=15-X1	37	+15.1	H05V-K/BK/1.0			54		3ABDC080069-RT/12

Cust. Doc. No.	2/3/2008	Prepared	2/3/2008	Guchua Hui	Terminal Report	Item des.	
Customer	2/3/2008	Approved	2/3/2008	LI Shipping	Resp. dept.	Rev. ind.	A
ABB Ref. No.		Project			Doc. No.	3ABDC080069-RT-X	Sheet of
							1
							3



ABB Drives

To Designation			Terminal bar			From Designation			Term	Document ref.	Rev. No.						
Loc.	Fun.	Prod	Term	Cable/Wire	Core	L	Designation	Term				L	Cable/Wire	Core	Loc.	Fun.	Prod.
+14.2	=14	=14-X125.1	5/1	H05V-K/BK/1.0			=15-X1	37		H05V-K/BK/1.0		+15.1	=15	=15-X50.1	2/2	3ABDC080069-RT/12	
				H05V-K/BK/1.0			=15-X1	38		H05V-K/BK/1.0		+15.1	=15	=15-Q1	64	3ABDC080069-RT/12	
+14.2	=14	=14-X125.1	6/1	H05V-K/BK/1.0			=15-X1	38		H05V-K/BK/1.0		+15.1	=15	=15-X50.1	3/2	3ABDC080069-RT/12	
+14.2	=15	=15-G10	-	H05V-K/GNYE/1.0			=15-X1	PE2		H07V-K/GNYE/2.5		+14.2	=15	=15-G10	PE		
				/			=15-X1	PE3		/							
				/			=15-X1			/							
+15.1	=15	=15-A417	X5.6	H05V-K/BK/0.75			=15-X1Q1	1		/							
+15.1	=15	=15-A417	X5.5	H05V-K/BK/0.75			=15-X1Q1	2		/							
+15.1	=15	=15-A417	X4.2	H05V-K/BK/0.75			=15-X2Q1	1		/							
+15.1	=15	=15-A417	X4.1	H05V-K/BK/0.75			=15-X2Q1	2		/							
				/			=15-X2Q1	3		/							
				/			=15-X2Q1	4		/							
+15.1	=15	=15-Q1	1A	H3RR-K/B/2_5			=15-X3Q1	1		/							
+15.1	=15	=15-Q1	3A	H3RR-K/B/2_5			=15-X3Q1	2		/							
+15.1	=15	=15-A417	X1:3	H07V-K/BK/2.5			=15-X4Q1	1		/							
+15.1	=15	=15-R1	2	H07V-K/BK/2.5			=15-X4Q1	2		/							
+15.1	=15	=15-A417	X2:3	H07V-K/BK/2.5			=15-X4Q1	3		/							
+15.1	=15	=15-R3	2	H07V-K/BK/2.5			=15-X4Q1	4		/							
+14.2	=15	=15-A41.X34	3/2	/			=15-X11	1	F	/		+14.2	=15	=15-G10	-	3ABDC080069-RT/10	
				/			G	=15-X11	2	F		+14.2	=15	=15-A415	X1:2	3ABDC080069-RT/10	
				/			G	=15-X11	3	/							
+14.2	=15	=15-A41.X34	2/2	/			=15-X11	4	H	/		+14.2	=15	=15-G10	+	3ABDC080069-RT/10	
				/			I	=15-X11	5	H		+14.2	=15	=15-A415	X1:1	3ABDC080069-RT/10	

Cust. Doc. No	2/3/2008	Prepared	2/3/2008	Guohua Hui	Title	Terminal Report	Item des.
Customer	2/3/2008	Approved	2/3/2008	Li Shipping		Resp. dept.	Rev. Ind. A
ABB Ref. No		Project				Doc. No.	3ABDC080069-RT-X
							Lang
							Sheet
							of
							2
							3



ABB Drives

To Designation			Terminal bar			From Designation			Rev. No.							
Loc.	Fun.	Prod	Term	Cable/Wire	Core	L	Designation	Term		L	Core	Loc.	Fun.	Prod.	Term	Document ref.
				/			1	=15-X11	6	/						
+14.2	=15	=15-X1	36/1	H05V-K/BK/1.0				=15-X50.1	1	H05V-K/BK/1.0	+15.1	=15	=15-X50.2	1/2	3ABDC080069-RT/12	
+14.2	=15	=15-X1	37/1	H05V-K/BK/1.0				=15-X50.1	2	H05V-K/BK/1.0	+15.1	=15	=15-X50.2	2/2	3ABDC080069-RT/12	
+14.2	=15	=15-X1	38/1	H05V-K/BK/1.0				=15-X50.1	3	H05V-K/BK/1.0	+15.1	=15	=15-X50.2	3/2	3ABDC080069-RT/12	
+14.2	=15	=15-X1	31/1	H05V-K/BK/1.0				=15-X50.1	4	/						
+14.2	=15	=15-X1	29/2	H05V-K/BK/1.0				=15-X50.1	5	H05V-K/BK/1.0	+15.1	=15	=15-X50.2	5/2	3ABDC080069-RT/12	
+14.2	=15	=15-X1	30/1	H05V-K/BU/1.0				=15-X50.1	6	H05V-K/BK/1.0	+15.1	=15	=15-X50.2	6/2	3ABDC080069-RT/12	
				/				=15-X50.1	7	/						
+15.1	=15	=15-X50.1	1/1	H05V-K/BK/1.0				=15-X50.2	1	/						
+15.1	=15	=15-X50.1	2/1	H05V-K/BK/1.0				=15-X50.2	2	/						
+15.1	=15	=15-X50.1	3/1	H05V-K/BK/1.0				=15-X50.2	3	/						
+14.2	=15	=15-X1	32/1	H05V-K/BK/1.0				=15-X50.2	4	/						
+15.1	=15	=15-X50.1	5/1	H05V-K/BK/1.0				=15-X50.2	5	/						
+15.1	=15	=15-X50.1	6/1	H05V-K/BK/1.0				=15-X50.2	6	/						
				/				=15-X50.2	7	/						

Cust. Doc. No	Prepared	2/3/2008	Guohua Hui	Terminal Report	Item des.
Customer	Approved	2/3/2008	LI Shipping	Resp. dept.	Rev. Ind. A
ABB Ref. No	Project			Doc. No.	3ABDC080069-RT-X
					Lang
					Sheet
					of



ABB Drives

Based on	Prepared	Hui Guohua	Type	3ABDC080069DU05005
Resp. dept.	Approved	Li Shiping	Unit	Fun.=
Cust. Doc. No	Project			
ABB Ref. No	Customer			
Item Number	Sort String	Component number	Description and Text	Technical Data
0010	-Q1	3AFE64787039	FUSE SWITCH	630A, 1000V, 4-NAP.
0020	(-Q1)	3AFE64673769	HRC FUSE LINK	1000A, 1000V/900A, 1000V
0030	(-Q1)	3AFE68326435	CHARGING FUSE	1000V, 20A
0040	-R1	3AFE10028531	POWER RESISTOR	ZRF 30X167.5 S 33R
0050	-R2	3AFE10028531	POWER RESISTOR	ZRF 30X167.5 S 33R
0060	-R3	3AFE10028531	POWER RESISTOR	ZRF 30X167.5 S 33R
0070	-R4	3AFE10028531	POWER RESISTOR	ZRF 30X167.5 S 33R
0080	-A417	3AFE64649540	CHAR. CTRL BOARD	72 X 245
0090	-U11.1	3AFE68685192	ACS800-104-0580-7+E205+V991	R81, 690V 580KVA+DU/DT
0100	-U11.2	3AFE68685192	ACS800-104-0580-7+E205+V991	R81, 690V 580KVA+DU/DT
0110	-X02.1	3AFE64698401	CONNECT. PLUG KI	INVERTER CONNECTOR
0120	-X02.2	3AFE64698401	CONNECT. PLUG KI	INVERTER CONNECTOR
0130	-Z1.1-3	3AFE64308998	COMM. MODE CHOKE	500F/55UF/102X76X25
0140	-Z2.1-3	3AFE64308998	COMM. MODE CHOKE	500F/55UF/102X76X25
0150	-G10	3ABD00010604	POWER SUPPLY	24V 3.2A
0160	-F11	3AFE35077766	PROTECTION SWITCH	4A, 230V/400V AKA
0170	-A49	3AFE64378660	CONTROL PANEL	4*20CHARS, 16 BUTTONS
0180	-A48	3AFE64532588	FILTERING BOARD	DIAGNOSTICS AND INTERFACE
0190	(-A48)	3AFE10010390	PANEL PLUG CONN	PHONE CONNECTOR L=34MM
0200	(-A48)	3AFE64750844	GROUNDING WIRE	130 X 266MM
0210	(-A48)	3AFE68228344	CDP PANEL	FOR CDP PANEL
0220	(-A48)	3AFE68228654	EMC SHIELD	3M CROSS, RMT0/CDP312R
0230	(-A48)	3AFE64644521	FLAT CABLE	RMT0-02
0240	-A41	3AFE64607901	DRIVE CTRL UNIT	4CH
0250	-A415	3AFE64669982	BRANCHING UNIT	PROFIBUS DP ADAPTER
0260	-A411	3AFE64606859	DATA INTERFACE	SYSTEM SOFTWARE
0270	-N	3AFE64663224	SOFTWARE	
0280	-A412	3AFE64379194	PULSE ENC. INTERF	
0010		3AFE64610805	PULSE ENC. INTERF	
0290	-A413	3AFE64192454	DPCS COMMUN. OPTI	
0300	-X1	3AFE68486009	TERMINAL BLOCK	X1(2)
0310	-X11	3AFE68351391	TERMINAL BLOCK	X11: 1-6
0320	-K10.1	3ABD00017299	TIME RELAY	0.05S-300H

Based on	Prepared	Hui Guohua	Type	3ABDC080069DU05005
Resp. dept.	Approved	Li Shipping	Unit	Fun.=
Cust. Doc. No	Project			
ABB Ref. No	Customer			
Item Number	Sort String	Component number	Description and Text	Lang. EN
0330	-K11.1	3ABD00018091	RELAY KIT CR-M230AC3L+BASE+RC	230VAC 3C0 10A
0010		3ABD00018021	RELAY CR-M230AC3L	230 VAC 3 C/O
0020		3ABD00018026	RELAY SOCKET CR-M3SS	STANDARD SOCKET FOR 3 C/O
0030		3ABD00018025	RELAY RC ELEMENT CR-P/M 52C	RC ELEMENT, 110-240 VAC
0040		3ABD00018028	RELAY HOLDER CR-MH	HOLDER FOR CR-M SOCKET
0340	-F12	3AFE35077766	PROTECTION SWITCH S251S-K4	4A, 230V/400V 6KA
0350	(-F12)	3ABD00012170	AUXILIARY CONTACT S250-H11	GH S250 1916 R0011
0360	-Y10	3AFE10005019	FAN W2E 143-AA09-01	220V/50/60HZ/24W
0370	(-Y10)	3AFE64082981	FINGER GUARD LZ36	150. 5*162. 67114LHR
0380	-F10	3AFE36653345	PROTECTION SWITCH S251S-K2	2A, 230V/400V 6KA
0390	-X25	3AFE68472601	TERMINAL BLOCK ACS800 MD	DIS. CUTOFFPOINTR8, -X25(1)
0400	-X125.1	3AFE64674081	CONNECTOR STV S 9 SB	FOR AUX. VOLTAGE
0410	-X125.1	3AFE64674056	CONNECTOR STV S 9 SS	PIN HEADER
0420	-X111.1	3ABD00018097	CONNECTOR STV S 7 SB	
0430	-X111.1	3ABD00018098	CONNECTOR STV S 7 SS	
0440	-X111.2	3ABD00018097	CONNECTOR STV S 7 SB	
0450	-X111.2	3ABD00018098	CONNECTOR STV S 7 SS	
	-X50.1	3AFE64674081	CONNECTOR STV S 9 SB	
	-X50.2	3AFE64674081	CONNECTOR STV S 9 SB	

Doc. Identity	Rev	Lg	Kind	Reference Des.	Type	Title	Customer's Doc. Identity	File	Rev.
3ABDC080069-BU2/01	A		EFS2	=22, +22.1	Product circuit diagram	ACS800 607 Braking Chopper (690V) Unit 1		=22-01	
3ABDC080069-BU2/02	A		EFS2	=22, +22.1	Product circuit diagram	ACS800 607 Braking Chopper (690V) Unit 2		=22-02	
3ABDC080069-BU2/03	A		EFS2	=22, +22.1	Product circuit diagram	ACS800 607 Braking Chopper (690V) Unit 3		=22-03	

Based on
Replaces
Replaced by
Standard

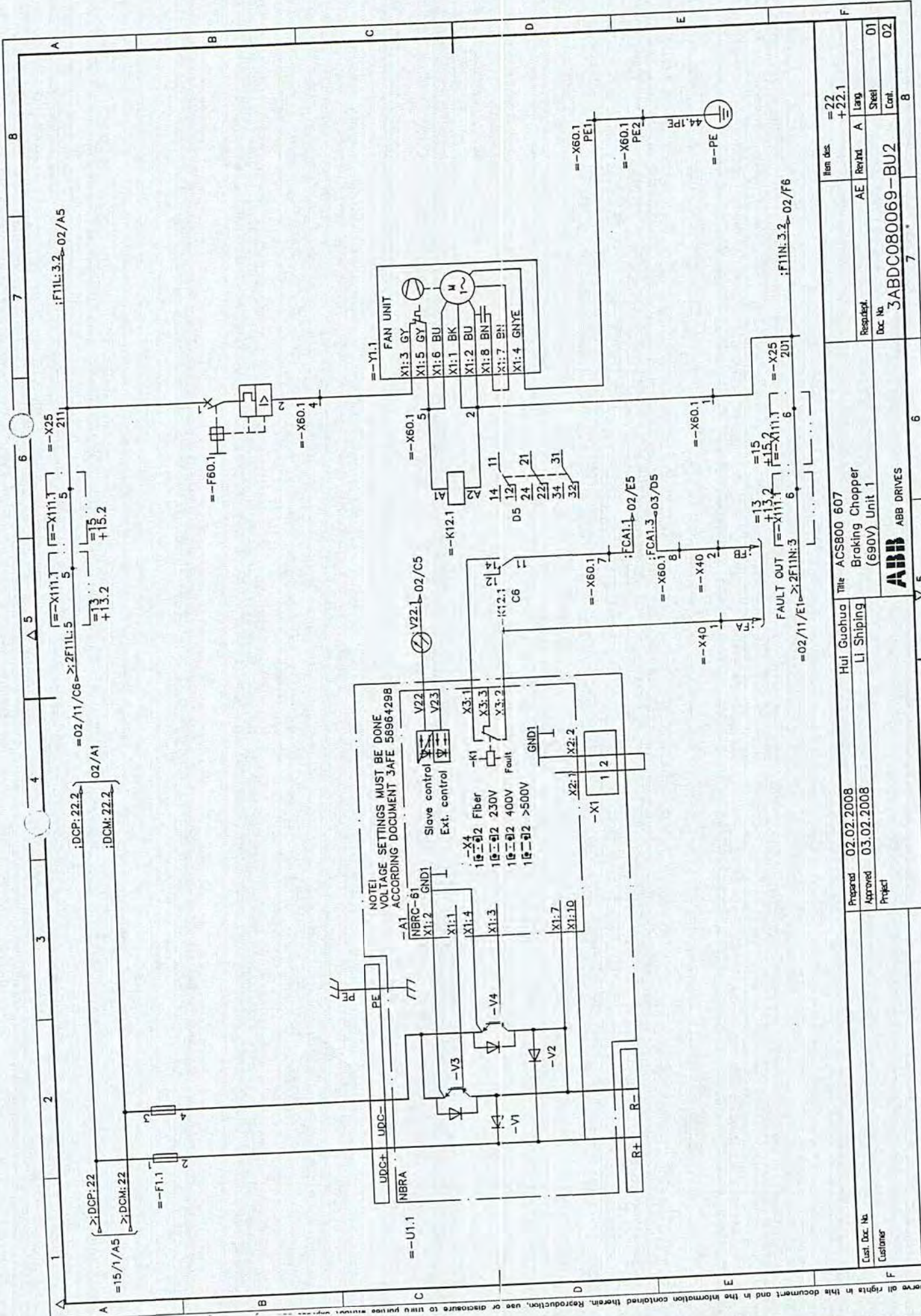
Prepared 2/3/2008
Approved 2/3/2008

Guohua Hui
LI Shipping



Type code
3ABDC080069-BU2-D

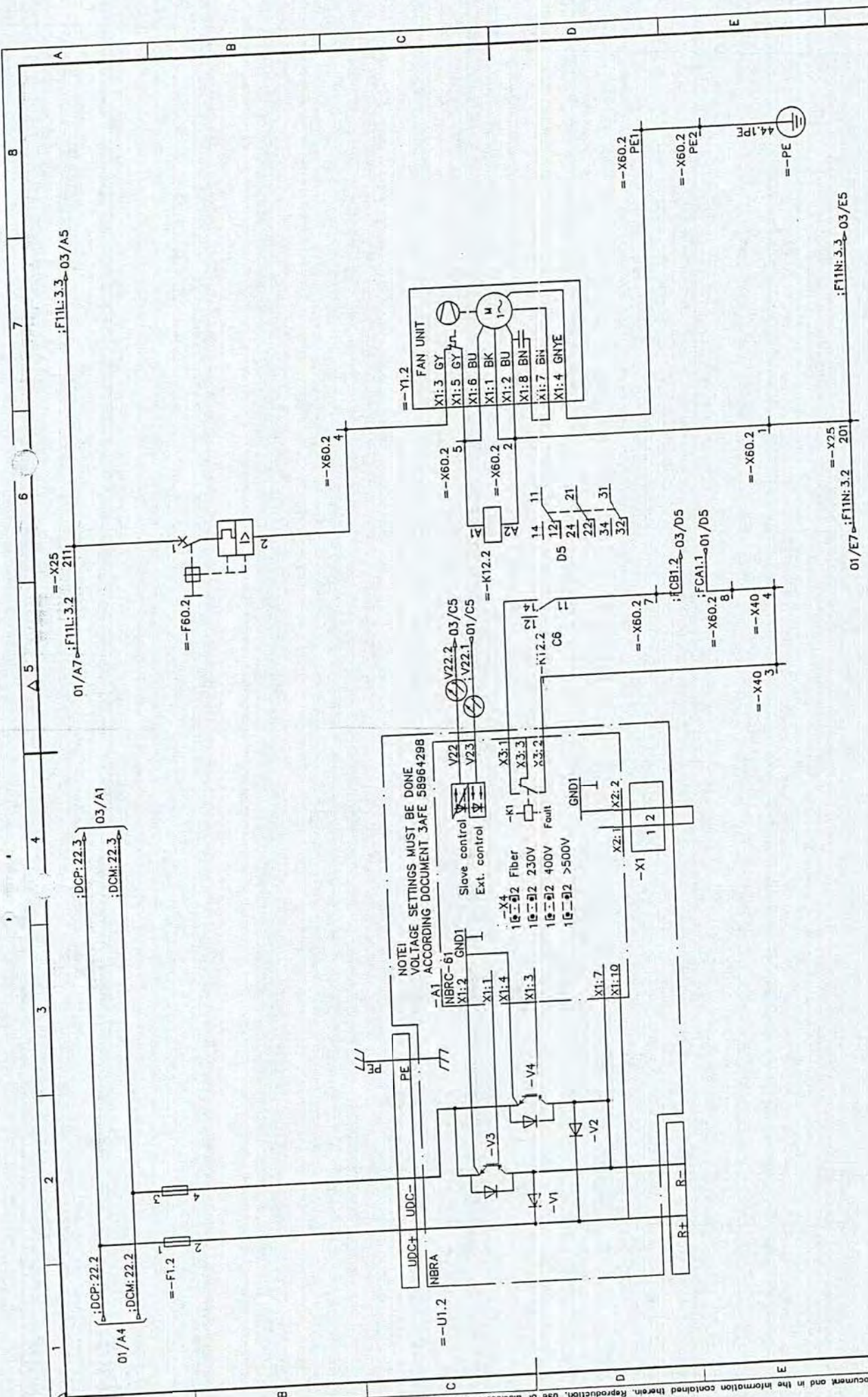
Rev. Ind.
Lang.
Sheet
of
1
1



Item desc.	=22 +22.1
RevHd	AE
Lang	Steel
Doc No	3ABDC080069-BU2
Cont.	8

Prepared	02.02.2008	Hui Guohua	Title	ACS800 607
Approved	03.02.2008	Li Shiping	Braking Chopper (690V) Unit 1	
Project			ABB ABB DRIVES	

RevHd	AE	Lang	Steel
Doc No	3ABDC080069-BU2	Cont.	8



NOTE!
 VOLTAGE SETTINGS MUST BE DONE
 ACCORDING DOCUMENT SAFE 58964298

Slave control
 Ext. control

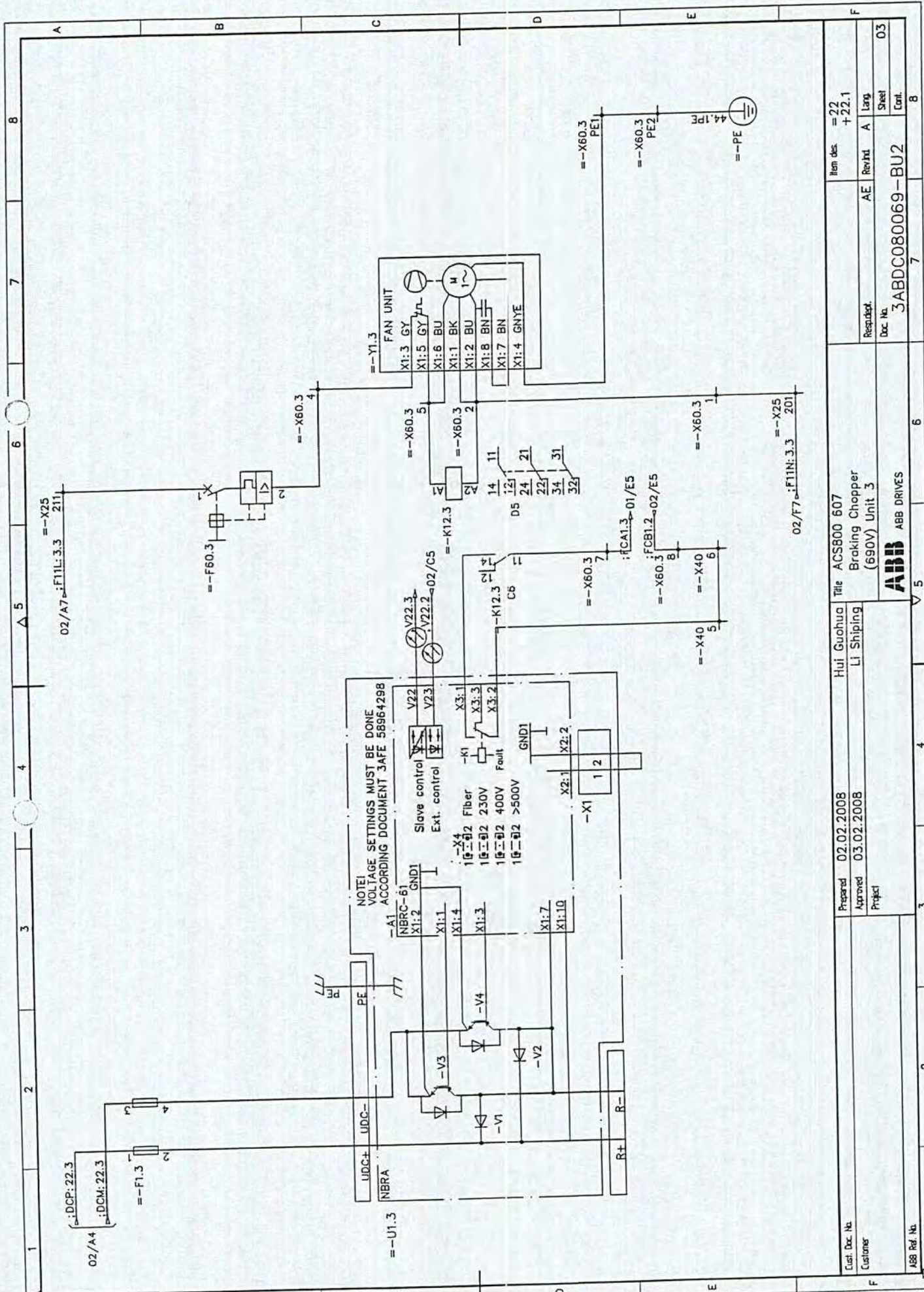
-X4
 1 5 2 2 Fiber
 1 5 2 2 230V
 1 5 2 2 400V
 1 5 2 2 >500V

GND1

X2.1 X2.2

-X1 1 2

01/A4	01/A7	01/E7	02.02.2008	Hui Guohua	ACS800 607	Non des	22
:DCP: 22.3	:F11L: 3.2	:F11N: 3.2	03.02.2008	Li Shiping	Braking Chopper	+22.1	
:DCM: 22.3	:F11L: 3.3-03/A5	:F11N: 3.3-03/E5	Project	Li Shipping	(690V) Unit 2	AE	A
					ABB ABB DRIVES	Req/Int	Lang
						Doc. No.	Sheet
						3ABDC0800069-BU2	
						Cont.	03
							8



Client Doc. No.	02.02.2008	Prepared	Hui Guohua	Title	ACS800 607	Item des.	= 22 + 22.1
Customer	03.02.2008	Approved	Li Shipping		Braking Chopper (690V) Unit 3	Reguldet.	AE Revhd A
ABB Ref. No.		Project				Doc. No.	3ABDC080069-BU2
						Sheet	03
						Cont.	B

We reserve all rights in this document and in the information contained therein. Reproduction, use or disclosure to third parties without express authority is strictly forbidden. Copy, use, reproduction, distribution, or any other action is prohibited without the written permission of ABB.

To Designation			Terminal bar			From Designation			Rev. No.								
Loc.	Fun.	Prod	Term	CableWire	Core	L	Designation	Term	L	CableWire	Core	Loc.	Fun.	Prod.	Term	Document ref.	Rev. No.
	=22:F11 N:3.2	=22:F11N:3.2		/			=22-X25	201		H07V-K/BU/2.5		+22.1	=22	=22-X60.2	1/3	3ABDC080069-BU2/02	
+22.1	=22	=22-X25	211/4	H05V-K/BK/1.0			=22-X25	201		/						3ABDC080069-BU2/02	
+22.1	=22	=22-X25	201/2	H05V-K/BK/1.0			=22-X25	211		/						3ABDC080069-BU2/02	
+11.2	=11	=11-X111.2	5/2	H05V-K/BK/1.0			=22-X25	211		H07V-K/BK/4.0		+22.1	=22	=22-F60.2	1	3ABDC080069-BU2/02	
+22.1	=22:F11 L:3.2	=22:F11L:3.2	X1:7	H05V-K/BK/1.0			=22-X25	211		/						3ABDC080069-BU2/02	
+22.1	=22	=22-Y1.3		/			=22-X40	1		H07V-K/BK/1.5		+22.1	=22	=22-U1.1.A1	X3:2		
				/			=22-X40	2		H07V-K/BK/1.5		+22.1	=22	=22-X60.1	8/3		
				/		A	=22-X40	3		H07V-K/BK/1.5		+22.1	=22	=22-U1.2.A1	X3:2		
				/		A	=22-X40	4		H07V-K/BK/1.5		+22.1	=22	=22-X60.2	8/3		
				/		B	=22-X40	5		H07V-K/BK/1.5		+22.1	=22	=22-U1.3.A1	X3:2		
				/		B	=22-X40	6		H07V-K/BK/1.5		+22.1	=22	=22-X60.3	8/3		
				/		C	=22-X60.1	1		/							
+21.1	=21	=21-X25	211/2	H05V-K/BK/1.0			=22-X60.1	2		H07V-K/BU/2.5		+22.1	=22	=22-Y1.1	X1:1	3ABDC080069-BU2/01	
+22.1	=22	=22-Y1.1	X1:2	H07V-K/BU/2.5			=22-X60.1	2		H07V-K/BU/2.5		+22.1	=22	=22-K12.1	A2	3ABDC080069-BU2/01	
				H07V-K/BU/2.5			=22-X60.1	4		H05V-K/BK/1.0		+21.1	=21	=21-X25	201/4		
+22.1	=22	=22-F60.1	2	H05V-K/BK/1.0			=22-X60.1	4		H07V-K/BK/2.5		+22.1	=22	=22-Y1.1	X1:3		
				H05V-K/BK/1.0			=22-X60.1	5		H07V-K/BK/2.5		+22.1	=22	=22-K12.1	A1	3ABDC080069-BU2/01	
+22.1	=22	=22-Y1.1	X1:6	H07V-K/BK/2.5			=22-X60.1	5		/						3ABDC080069-BU2/01	
+22.1	=22	=22-Y1.1	X1:5	H07V-K/BK/2.5			=22-X60.1	7		H07V-K/BK/1.5		+22.1	=22	=22-K12.1	11		
+22.1	=22	=22-X60.2	8/4	H07V-K/BK/1.5			=22-X60.1	8		H07V-K/BK/1.5		+22.1	=22	=22-X40	2/3		
+22.1	=22	=22-X60.3	7/4	H07V-K/BK/1.5			=22-X60.1	PE1		H07V-K/GNVE/2.5		+22.1	=22	=22-Y1.1	X1:4	3ABDC080069-BU2/01	
+22.1	=22	=22-X60.1	PE2/1	H07V-K/GNVE/4.0			=22-X60.1	PE2		H07V-K/GNVE/4.0		+22.1	=22	=22-X60.1	PE1/4	3ABDC080069-BU2/01	
				/													

Customer	Guohua Hui	Terminal Report	Item des.
Prepared	2/3/2008	Resp. dept.	Lang.
Approved	2/3/2008	Doc. No.	Rev. Ind.
Project	LI Shipping	3ABDC080069-BU2-X	A
ABB Ref. No.	ABB Drives	1	Sheet
		3	of

To Designation			Terminal bar			From Designation			Rev. No.							
Loc.	Fun.	Prod	Term	Cable/Wire	Core	L	Designation	Term		L	Cable/Wire	Core	Loc.	Fun.	Prod.	Term
				/		D	=22-X60.2	1		H07V-K/BU/2.5		+22.1	=22	=22-X25	201/1	
				/		D	=22-X60.2	1		H05V-K/BK/1.0		+22.1	=22	=22-X60.3	1/3	
				H07V-K/BU/2.5		D	=22-X60.2	2		H07V-K/BU/2.5		+22.1	=22	=22-K12.2	A2	3ABDC080069-BU2/02
+22.1	=22	=22-Y1.2	X1:2	H07V-K/BU/2.5		D	=22-X60.2	2		H07V-K/BU/2.5		+22.1	=22	=22-Y1.2	X1:1	3ABDC080069-BU2/02
+22.1	=22	=22-F60.2	2	H07V-K/BK/2.5			=22-X60.2	4		H07V-K/BK/2.5		+22.1	=22	=22-Y1.2	X1:3	
+22.1	=22	=22-Y1.2	X1:5	H07V-K/BK/2.5			=22-X60.2	5		/						3ABDC080069-BU2/02
+22.1	=22	=22-Y1.2	X1:6	H07V-K/BK/2.5			=22-X60.2	5		H07V-K/BK/2.5		+22.1	=22	=22-K12.2	A1	3ABDC080069-BU2/02
+22.1	=22	=22-X60.3	8/4	H07V-K/BK/1.5			=22-X60.2	7		H07V-K/BK/1.5		+22.1	=22	=22-K12.2	11	
+22.1	=22	=22-X60.1	7/4	H07V-K/BK/1.5			=22-X60.2	8		H07V-K/BK/1.5		+22.1	=22	=22-X40	4/3	
+22.1	=22	=22-X60.2	PE2/1	H07V-K/GNYE/4.0			=22-X60.2	PE1		H07V-K/GNYE/2.5		+22.1	=22	=22-Y1.2	X1:4	3ABDC080069-BU2/02
				/			=22-X60.2	PE2		H07V-K/GNYE/4.0		+22.1	=22	=22-X60.2	PE1/4	3ABDC080069-BU2/02
				/			=22-X60.2	PE2		H07V-K/GNYE/4.0		+22.1	=22	=22-PE	44.1P E	3ABDC080069-BU2/02
				/			=22-X60.2	PE2		H05V-K/BK/1.0		+22.1	=22	=22-X60.3	PE2/3	3ABDC080069-BU2/02
				/		E	=22-X60.3	1		H05V-K/BK/1.0		+22.1	=22	=22-X60.2	1/3	
+22.1	=22	=22-Y1.3	X1:2	H07V-K/BU/2.5		E	=22-X60.3	2		H07V-K/BU/2.5		+22.1	=22	=22-Y1.3	X1:1	3ABDC080069-BU2/03
				H07V-K/BU/2.5		E	=22-X60.3	2		H07V-K/BU/2.5		+22.1	=22	=22-K12.3	A2	3ABDC080069-BU2/03
+22.1	=22	=22-F60.3	2	H07V-K/BK/2.5			=22-X60.3	4		H07V-K/BK/2.5		+22.1	=22	=22-Y1.3	X1:3	
+22.1	=22	=22-Y1.3	X1:6	H07V-K/BK/2.5			=22-X60.3	5		H07V-K/BK/2.5		+22.1	=22	=22-K12.3	A1	3ABDC080069-BU2/03
+22.1	=22	=22-Y1.3	X1:5	H07V-K/BK/2.5			=22-X60.3	5		/						3ABDC080069-BU2/03
+22.1	=22	=22-X60.1	8/4	H07V-K/BK/1.5			=22-X60.3	7		H07V-K/BK/1.5		+22.1	=22	=22-K12.3	11	
+22.1	=22	=22-X60.2	7/4	H07V-K/BK/1.5			=22-X60.3	8		H07V-K/BK/1.5		+22.1	=22	=22-X40	6/3	
+22.1	=22	=22-X60.3	PE2/1	H07V-K/GNYE/4.0			=22-X60.3	PE1		H07V-K/GNYE/2.5		+22.1	=22	=22-Y1.3	X1:4	3ABDC080069-BU2/03
				/			=22-X60.3	PE2		H05V-K/BK/1.0		+22.1	=22	=22-X60.2	PE2/3	3ABDC080069-BU2/03

Cust. Doc. No	2/3/2008	Prepared	2/3/2008	Guchua Hui	Terminal Report	Item des.
Customer	2/3/2008	Approved	2/3/2008	LI Shipping	Resp. dept.	Rev. ind.
Project					Doc. No.	A
ABB Ref. No				ABB Drives	3ABDC080069-BU2-X	Lang
						Sheet
						of
						2
						3

To Designation			Terminal bar			From Designation			Document ref.	Rev. No.					
Loc.	Fun.	Prod	Core	L	Designation	Term	L	Cable/Wire	Core	Loc.	Fun.	Prod.	Term		
					=22-X60.3	PE2		H07V-K/GNYE/4.0		+22.1	=22	=22-X60.3	PE1/4	3ABDC080069-BU2/03	
											Terminal Report		Item des.		
											Resp. dept.		Rev. Ind.		
											Doc. No.		Lang		
											3ABDC080069-BU2-X		A		
											ABB		Sheet		
											ABB Drives		of		
											3		3		

Cust. Doc. No
Customer

Prepared 2/3/2008
Approved 2/3/2008
Project

Guohua Hui
LI Shipping

Terminal Report

Resp. dept.
Doc. No.

Rev. Ind. A
3ABDC080069-BU2-X

ABB

ABB Drives

Lang

Sheet
of

Based on	Prepared	Hui Guohua	Type	3ABDC080069BU05002
Resp. dept.	AE	Li Shipping	Unit	Fun.=
Cust. Doc. No		ABB ABB Drive	Project	Loc.+
ABB Ref. No			Customer	Lang. EN
Item Number	Sort String	Component number	Description and Text	Technical Data
0010	-U1.1	3AFE59011065	BRAKING CHOPPER NBRA-669C	
0020	-U1.2	3AFE59011065	BRAKING CHOPPER NBRA-669C	
0030	-U1.3	3AFE59011065	BRAKING CHOPPER NBRA-669C	
0040	-F1.1	3AFE10028205	FUSE BASE 170H 3005	1400V 630A 110MM
0050	(-F1.1)	3AFE68327466	SCREWFUSE 170M 8635	630 A, 1000V
0060	-X25	3AFE68485487	TERMINAL BLOCK AS ACS800 MD	DIS. CUT. OFF POINT, -X25(3)
0070	-F60.1	3AFE35077766	PROTECTION SWITCH S251S-K4	4A, 230V/400V 6KA
0080	-Y1.1	3AFE10032962	FAN G2E140-PI51-09	230V +/-10% 50/60HZ/180W
0090	-K12.1	3ABD00018091	RELAY KIT CR-M230AC3L+BASE+RC	230VAC 3CO 10A
0010		3ABD00018021	RELAY CR-M230AC3L	230 VAC 3 C/O
0020		3ABD00018026	RELAY SOCKET CR-M3SS	STANDARD SOCKET FOR 3 C/O
0030		3ABD00018025	RELAY RC ELEMENT CR-P/M 52C	RC ELEMENT, 110-240 VAC
0040		3ABD00018028	RELAY HOLDER CR-MH	HOLDER FOR CR-M SOCKET
0100	-X60.1	3AFE68486742	TERMINAL BLOCK AS ACS800 MD	BRA. UNIT CONTROL, X60
0110	-F1.2	3AFE10028205	FUSE BASE 170H 3005	1400V 630A 110MM
0120	(-F1.2)	3AFE68327466	SCREWFUSE 170M 8635	630 A, 1000V
0130	-F60.2	3AFE35077766	PROTECTION SWITCH S251S-K4	4A, 230V/400V 6KA
0140	-Y1.2	3AFE10032962	FAN G2E140-PI51-09	230V +/-10% 50/60HZ/180W
0150	-K12.2	3ABD00018091	RELAY KIT CR-M230AC3L+BASE+RC	230VAC 3CO 10A
0010		3ABD00018021	RELAY CR-M230AC3L	230 VAC 3 C/O
0020		3ABD00018026	RELAY SOCKET CR-M3SS	STANDARD SOCKET FOR 3 C/O
0030		3ABD00018025	RELAY RC ELEMENT CR-P/M 52C	RC ELEMENT, 110-240 VAC
0040		3ABD00018028	RELAY HOLDER CR-MH	HOLDER FOR CR-M SOCKET
0160	-X60.2	3AFE68486742	TERMINAL BLOCK AS ACS800 MD	BRA. UNIT CONTROL, X60
0170	-F1.3	3AFE10028205	FUSE BASE 170H 3005	1400V 630A 110MM
0180	(-F1.3)	3AFE68327466	SCREWFUSE 170M 8635	630 A, 1000V
0190	-F60.3	3AFE35077766	PROTECTION SWITCH S251S-K4	4A, 230V/400V 6KA
0200	-Y1.3	3AFE10032962	FAN G2E140-PI51-09	230V +/-10% 50/60HZ/180W
0210	-K12.3	3ABD00018091	RELAY KIT CR-M230AC3L+BASE+RC	230VAC 3CO 10A
0010		3ABD00018021	RELAY CR-M230AC3L	230 VAC 3 C/O
0020		3ABD00018026	RELAY SOCKET CR-M3SS	STANDARD SOCKET FOR 3 C/O
0030		3ABD00018025	RELAY RC ELEMENT CR-P/M 52C	RC ELEMENT, 110-240 VAC
0040		3ABD00018028	RELAY HOLDER CR-MH	HOLDER FOR CR-M SOCKET
0160	-X60.2	3AFE68486742	TERMINAL BLOCK AS ACS800 MD	BRA. UNIT CONTROL, X60
0170	-F1.3	3AFE10028205	FUSE BASE 170H 3005	1400V 630A 110MM
0180	(-F1.3)	3AFE68327466	SCREWFUSE 170M 8635	630 A, 1000V
0190	-F60.3	3AFE35077766	PROTECTION SWITCH S251S-K4	4A, 230V/400V 6KA
0200	-Y1.3	3AFE10032962	FAN G2E140-PI51-09	230V +/-10% 50/60HZ/180W
0210	-K12.3	3ABD00018091	RELAY KIT CR-M230AC3L+BASE+RC	230VAC 3CO 10A
0010		3ABD00018021	RELAY CR-M230AC3L	230 VAC 3 C/O
0020		3ABD00018026	RELAY SOCKET CR-M3SS	STANDARD SOCKET FOR 3 C/O
0030		3ABD00018025	RELAY RC ELEMENT CR-P/M 52C	RC ELEMENT, 110-240 VAC
0040		3ABD00018028	RELAY HOLDER CR-MH	HOLDER FOR CR-M SOCKET

Based on		Prepared	Hui Guohua	Type	3ABDC080069BU05002
Resp. dept.	AE	Approved	Li Shipping	Unit	Fun.=
Cust. Doc. No			ABB ABB Drive	Project	Loc.+
ABB Ref. No				Component number	Customer
Item Number	Sort String	Comp. Qty		Description and Text	Technical Data
0220	-X60.3	1	3AFE68486742	TERMINAL BLOCK AS ACS800 MD	BRA. UNIT CONTROL_X60
0230		3	3AFE64060996	WIRE KIT	
0240	-X40	1	3AFE68486785	TERMINAL BLOCK DISTRIBUTION 24V	0