

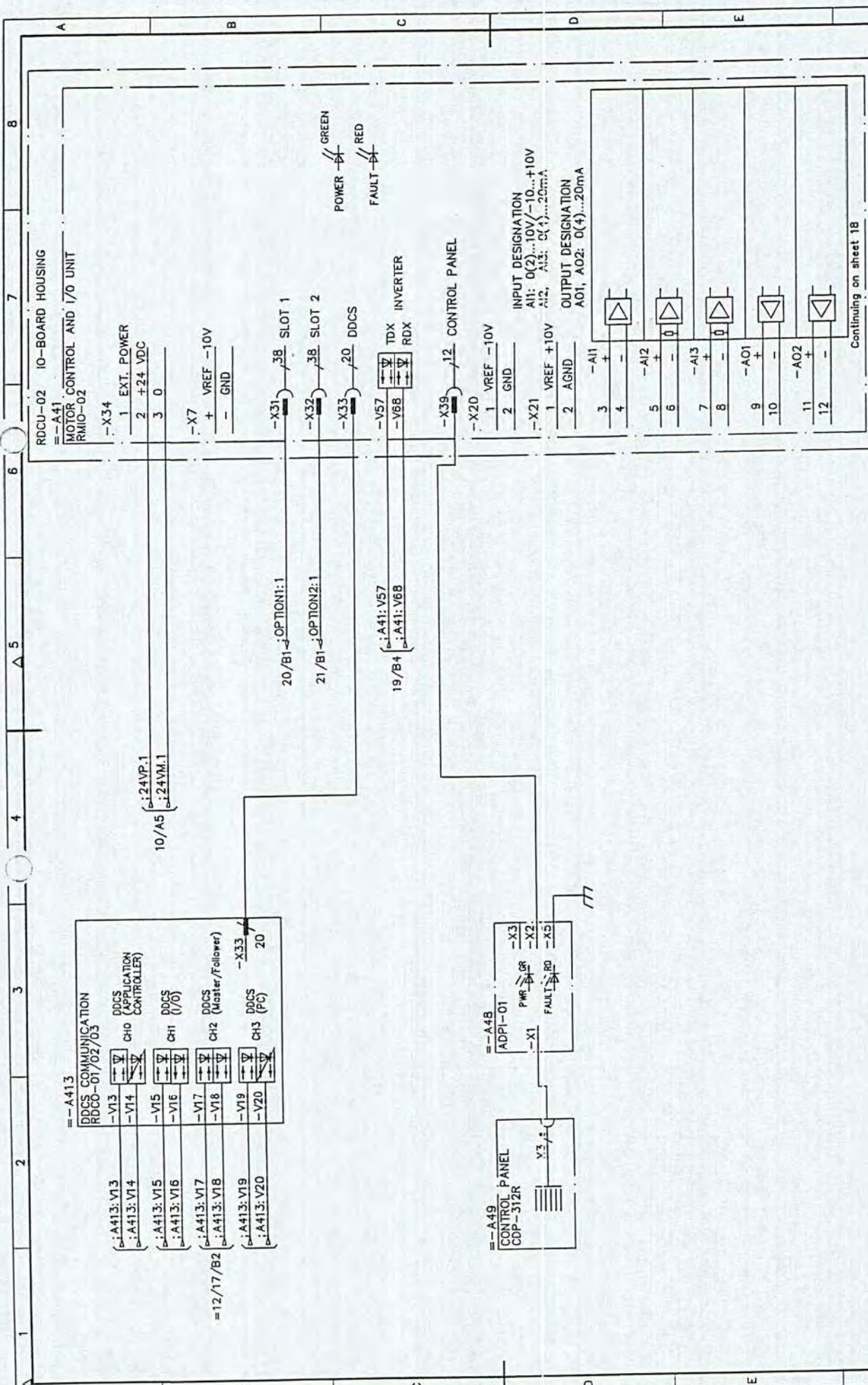
Start pulse relay for inverter fans

Start voltage relay for inverter fans

C3 18 15 14 11  
D7 12 11  
D7 24 21  
C7 34 31

Customer	Hui Guohua	ACS800-107 Drive Unit	Item des	=13 +13.2
Customer	LI Shipping	R8i-3xR8i	Revhd	A
Customer	LI Shipping	Fan control relays	Lang	Sheet
Customer	LI Shipping	ABB ABB DRIVES	Cont.	13
Customer	LI Shipping	ABB DRIVES	Cont.	17
Customer	LI Shipping	ABB DRIVES	Cont.	8



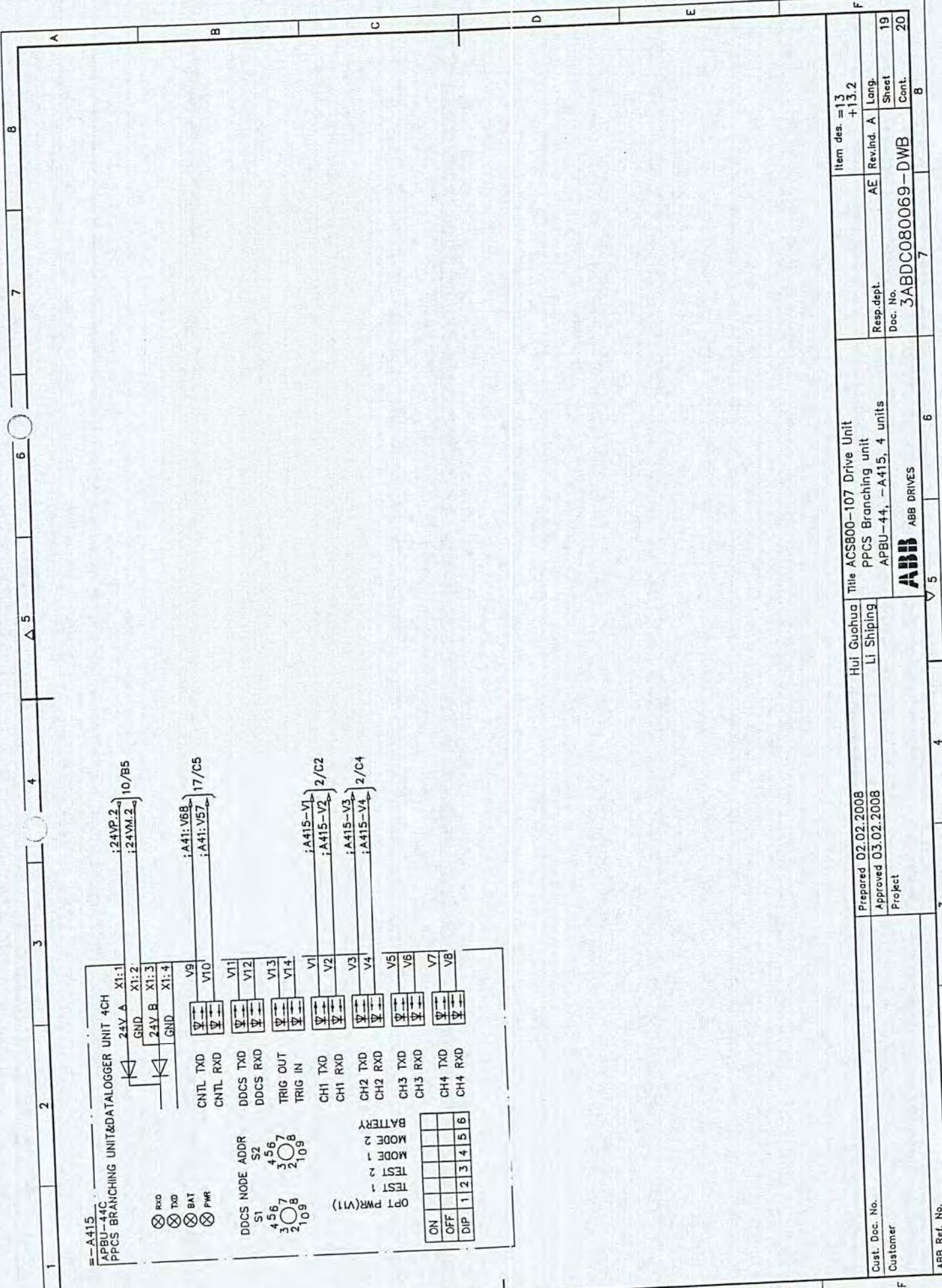


Cust. Doc. No. Customer	Prepared	02.02.2008	Hui Guohua	Title	ACS800-107 Drive Unit	Item des.	=13
	Approved	03.02.2008	LI Shipping		2-12xR8i RMIO-02	+13.2	
ABB Ref. No.	Project				CDP+NLMD+RDCO-0X+RAPI	Resubst.	AE RevInd A
						Doc No.	3ABDC080069-DWB
						Sheet	17
						Cont.	18









==A415  
APBU-44C  
PPCS BRANCHING UNIT & DATA LOGGER UNIT 4CH

Item des. = 13 +13.2	AE	Rev.ind. A	Lang.
3ABDC080069-DWB	7	7	7
Doc. No.	3ABDC080069-DWB	7	7
Sheet	19	19	19
Cont.	20	20	20

Title ACS800-107 Drive Unit  
PPCS Branching unit  
APBU-44, -A415, 4 units

Prepared 02.02.2008  
Approved 03.02.2008  
Project

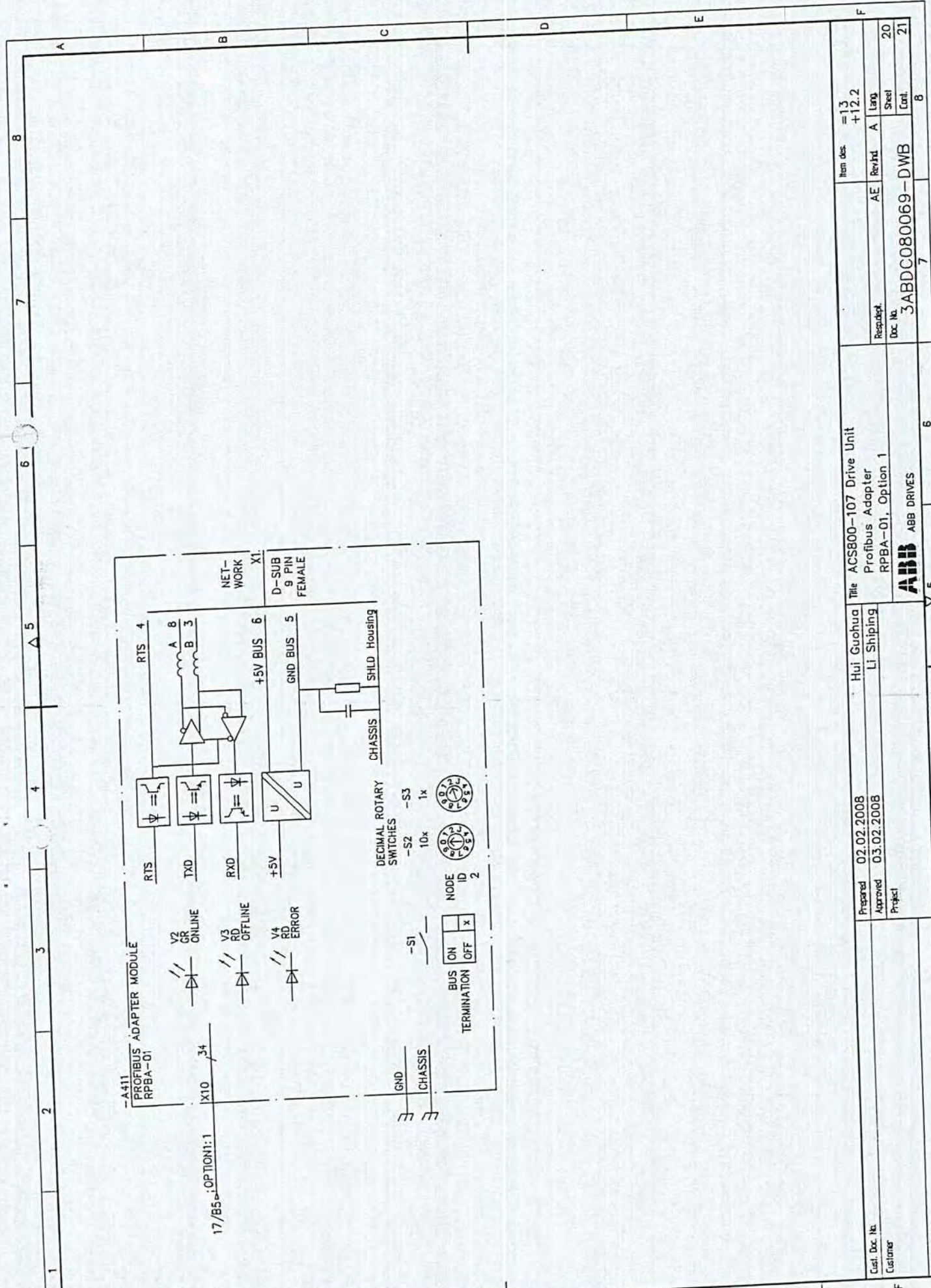
Hui Guohua  
LI Shipping

Cust. Doc. No.  
Customer

ABB Ref. No.

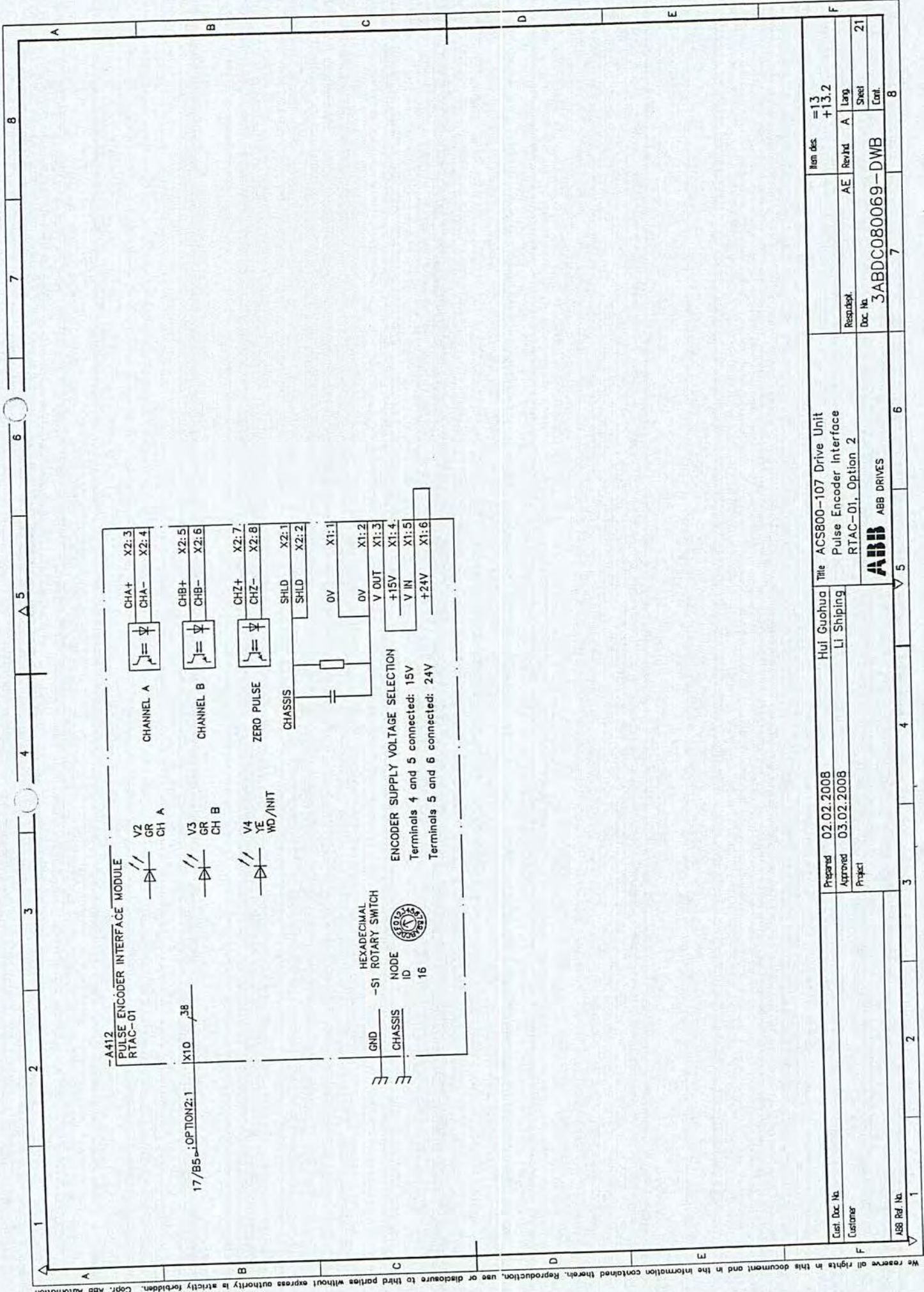
ABB  
ABB DRIVES





Item des.	=13 +12.2	8
Revised	AE	7
Doc. No.	3ABDC080069-DWB	6
Sheet	20	5
Cont.	21	4
<b>ABB</b> ABB DRIVES		
Title ACS800-107 Drive Unit		
Profibus Adapter		
RPBA-01, Option 1		
Prepared	02.02.2008	3
Approved	03.02.2008	2
Project		1
Cust. Doc. No.		
Customer		
ABB Ref. No.		
Prepared	Hui Guohua	5
Approved	Li Shipping	4





Item des.	=13 +13.2
Resubst.	AE Rev'd A
Doc. No.	3ABDC080069-DWB
Sheet	21
Cont.	

Title ACS800-107 Drive Unit  
 Pulse Encoder Interface  
 RTAC-01, Option 2

**ABB** ABB DRIVES

Prepared	02.02.2008	Hui Guohua
Approved	03.02.2008	LI Shipping
Project		

ABB Ref. No.	1
Customer	
Customer	
Customer	



To Designation				Terminal bar				From Designation				Rev. No.					
Loc.	Fun.	Prod	Term	Cable/Wire	Core	L	Designation	Term	L	Cable/Wire	Core	Loc.	Fun.	Prod.	Term	Document ref.	Rev. No.
+13.2	=13	=13-X25	204/3	H05V-K/BU/1.0		B	=13-X1	1	A	/						3ABDC080069-DWB/10	
				/		B	=13-X1	2	A	/			=13-A41 7N.1	=13-A417N.1		3ABDC080069-DWB/10	
				/		B	=13-X1	2	A	H05V-K/BK/1.0		+13.1	=13	=13-A417	X5.2	3ABDC080069-DWB/10	
+13.2	=13	=13-X1	30/3	H05V-K/BU/1.0		B	=13-X1	3		H05V-K/BU/1.0		+13.2	=13	=13-G10	N		
				/		C	=13-X1	11		H05V-K/BK/1.0		+13.2	=13	=13-F11	2	3ABDC080069-DWB/10	
				/		C	=13-X1	11		H05V-K/BK/1.0		+13.2	=13	=13-G10	L	3ABDC080069-DWB/10	
				/		C	=13-X1	12	D	/						3ABDC080069-DWB/10	
				/		E	=13-X1	13	D	/						3ABDC080069-DWB/10	
				/		E	=13-X1	14		H05V-K/BK/1.0		+13.1	=13	=13-Q1	83		
+13.2	=13	=13-F11	1	H07V-K/BK/6.0			=13-X1	15		H05V-K/BK/1.0		+13.2	=13	=13-X25	214/3		
+13.2	=13	=13-F12	1	H07V-K/BK/6.0			=13-X1	15		/						3ABDC080069-DWB/13	
+02.1	=02	=02-F43	13	H05V-K/BK/1.0			=13-X1	27		H05V-K/BK/1.0		+13.2	=13	=13-K11.1	14		
				H05V-K/BK/1.0			=13-X1	27		H05V-K/BK/1.0		+13.2	=13	=13-F12	2	3ABDC080069-DWB/13	
+13.2	=13	=13-X111.2	1/2	H05V-K/BK/1.0			=13-X1	28		H05V-K/BK/1.0		+13.1	=13	=13-Q1	73	3ABDC080069-DWB/13	
+13.1	=13	=13-X50.1	5/2	H05V-K/BK/1.0			=13-X1	29		H05V-K/BK/1.0		+13.1	=13	=13-Q1	74		
+13.2	=13	=13-K10.1	A1	H05V-K/BK/1.0			=13-X1	29		/						3ABDC080069-DWB/13	
+13.2	=13	=13-K11.1	A2	H05V-K/BU/1.0			=13-X1	30		H05V-K/BU/1.0		+13.2	=13	=13-X1	3/4		
+13.2	=13	=13-K10.1	A2	H05V-K/BU/1.0			=13-X1	30		H05V-K/BU/1.0		+13.1	=13	=13-X50.1	6/2	3ABDC080069-DWB/13	
+13.2	=13	=13-K11.1	11	H05V-K/BK/1.0			=13-X1	31		H05V-K/BK/1.0		+13.1	=13	=13-X50.1	4/2	3ABDC080069-DWB/13	
+13.2	=13	=13-K11.1	21	H05V-K/BK/1.0			=13-X1	32		H05V-K/BK/1.0		+13.1	=13	=13-X50.2	4/2	3ABDC080069-DWB/13	
+14.2	=14	=14-X125.1	1/1	H05V-K/BK/1.0			=13-X1	36		/							
+14.2	=14	=14-X125.1	2/1	H05V-K/BK/1.0			=13-X1	37		/							
+14.2	=14	=14-X125.1	3/1	H05V-K/BK/1.0			=13-X1	38		/							

Cust. Doc. No.		Prepared 2/3/2008		Guohua Huil Title		Terminal Report		Item des.	
Customer		Approved 2/3/2008		LI Shipping		Resp. dept.		Rev. Ind. A	
		Project		ABB Drives		Doc. No.		3ABDC080069-DWB-X	
ABB Ref. No.				ABB				Sheet of	



Loc.	To Designation			Cable/Wire	Core	Terminal bar			Cable/Wire	Core	From Designation			Document ref.	Rev. No.
	Fun.	Prod	Term			L	Designation	Term			L	Fun.	Prod.		
+13.2	=13	=13-G10		/		=13-X1	PE1	H07V-K/GNYE/4.0		+13.2	=13	=13-10PE	1PE	3ABDC080069-DWB/10	
+13.1	=13	=13-A417	X5.6	H05V-K/BK/0.75		=13-X1Q1	1	/		+13.2	=13	=13-G10	PE		
+13.1	=13	=13-A417	X5.5	H05V-K/BK/0.75		=13-X1Q1	2	/							
+13.1	=13	=13-A417	X4.2	H05V-K/BK/0.75		=13-X2Q1	1	/							
+13.1	=13	=13-A417	X4.1	H05V-K/BK/0.75		=13-X2Q1	2	/							
				/		=13-X2Q1	3	/							
				/		=13-X2Q1	4	/							
+13.1	=13	=13-Q1	1A	H3RR-K/B/2_5		=13-X3Q1	1	/							
+13.1	=13	=13-Q1	3A	H3RR-K/B/2_5		=13-X3Q1	2	/							
+13.1	=13	=13-A417	X1.3	H07V-K/BK/2.5		=13-X4Q1	1	/							
+13.1	=13	=13-R1	2	H07V-K/BK/2.5		=13-X4Q1	2	/							
+13.1	=13	=13-A417	X2.3	H07V-K/BK/2.5		=13-X4Q1	3	/							
+13.1	=13	=13-R3	2	H07V-K/BK/2.5		=13-X4Q1	4	/							
+13.2	=13	=13-A41.X34	3/2	/		=13-X11	1	F		+13.2	=13	=13-G10	-	3ABDC080069-DWB/10	
				/		=13-X11	2	F							
				/		=13-X11	3	G		+13.2	=13	=13-A415	X1:2	3ABDC080069-DWB/10	
+13.2	=13	=13-A41.X34	2/2	/		=13-X11	4	H		+13.2	=13	=13-G10	+	3ABDC080069-DWB/10	
				/		=13-X11	5	H							
				/		=13-X11	6	I		+13.2	=13	=13-A415	X1:1	3ABDC080069-DWB/10	
+14.2	=14	=14-X25	201/1	H07V-K/BU/10		=13-X25	201	I		+02.1	=02	-X1	10/2	3ABDC080069-DWB/10	

Cust. Doc. No	2/3/2008	Prepared	2/3/2008	Guohua Hui	Terminal Report	Item des.
Customer	2/3/2008	Approved	2/3/2008	LI Shipping	Resp. dept.	Rev. Ind. A
Project					Doc. No.	3ABDC080069-DWB-X
ABB Ref. No						Lang
						Sheet
						of
						2
						4



ABB Drives







Loc.	To Designation			Cable/Wire	Core	Terminal bar		Cable/Wire	Core	Loc.	From Designation			Document ref.	Rev. No.
	Fun.	Prod.	Term			L	Designation				Term	L	Fun.		
				/				/							
				/				/							
				/				/							
				/				/							
+13.2	=13	=13-X1	28/2	H05V-K/BK/1.0				H05V-K/BK/1.0		+02.1	=02	=02-F43	14	3ABDC080069-DWB/13	
				/				/							
+14.2	=14	=14-X111.2	3/1	H05V-K/BK/1.0				H05V-K/BK/1.0		+02.1	=02	=02-F44	14	3ABDC080069-MP2/13	
+14.2	=14	=14-X111.2	4/1	H05V-K/BK/1.0				H05V-K/BK/1.0		+02.1	=02	=02-F44	13	3ABDC080069-MP2/13	

Cust. Doc. No.	Prepared	2/3/2008	Guohua Hui	Terminal Report	Item des.
Customer	Approved	2/3/2008	LI Shipping	Resp. dept.	Rev. Ind.
	Project			Doc. No.	Lang
ABB Ref. No.			<b>ABB</b> ABB Drives		A
					Sheet
					4
					of
					4



Based on	Prepared	Hui Guohua	Type	3ABDC080069DU04003
Resp. dept.	Approved	Li Shipping	Unit	Fun.=
Cust. Doc. No	Project			
ABB Ref. No	Customer			
Item Number	Sort String	Component number	Description and Text	
0010	-Q1	3AFE64787039	FUSE SWITCH	0ESL630V32D04V2
0020	(-Q1)	3AFE64673769	HRC FUSE LINK	170M8650
0030	(-Q1)	3AFE68326435	CHARGING FUSE	170M2673
0040	-R1	3AFE10028531	POWER RESISTOR	ZRF 30X167.5 S 33R
0050	-R2	3AFE10028531	POWER RESISTOR	ZRF 30X167.5 S 33R
0060	-R3	3AFE10028531	POWER RESISTOR	ZRF 30X167.5 S 33R
0070	-R4	3AFE10028531	POWER RESISTOR	ZRF 30X167.5 S 33R
0080	-A417	3AFE664649540	CHAR. CTRL BOARD	ASFC-01C
0090	-U11.1	3AFE68685192	ACS800-104-0580-7+E205+V991	R81, 690V 580KVA+DU/DT
0100	-U11.2	3AFE68685192	ACS800-104-0580-7+E205+V991	R81, 690V 580KVA+DU/DT
0110	-X02.1	3AFE64698401	CONNECT. PLUG KI	X02.1-2
0120	-X02.2	3AFE64698401	CONNECT. PLUG KI	X02.1-2
0130	-Z1.1-3	3AFE64308998	COMM. MODE CHOKE	T60006-L2102-W468
0140	-Z2.1-3	3AFE64308998	COMM. MODE CHOKE	T60006-L2102-W468
0150	-G10	3ABD00010604	POWER SUPPLY	DR-75-24
0160	-F11	3AFE35077766	PROTECTION SWITCH	S251S-K4
0170	-A49	3AFE64378660	CONTROL PANEL	CDP-312R
0180	-A48	3AFE64532588	FILTERING BOARD	ADPI-01
0190	(-A48)	3AFE10010390	PANEL PLUG CONN	ACS200-MP-010A
0200	(-A48)	3AFE64750844	GROUNDING WIRE	CDP-GND
0210	(-A48)	3AFE68228344	CDP PANEL	ACS800 MD
0220	(-A48)	3AFE68228654	EMC SHIELD	ACS800 MD
0230	(-A48)	3AFE64644521	FLAT CABLE	RPLC-03C
0240	-A41	3AFE64607901	DRIVE CTRL UNIT	RDCU-02C
0250	-A415	3AFE64669982	BRANCHING UNIT	APBU-44C
0260	-A411	3AFE64606859	DATA INTERFACE	RPBA-01
0270	-N	3AFE64663224	SOFTWARE	AMXR 7. X
0280	-A412	3AFE64379194	PULSE ENC. INTERF	RTAC-01
0010		3AFE64610805	PULSE ENC. INTERF	RTAC-01
0290	-A413	3AFE64492454	DDCS COMMUN. OPTI	RDCO-02C
0300	-X1	3AFE68486009	TERMINAL BLOCK	DRIVE CTRL N#R8, DOL/FAN
0310	-X11	3AFE68351391	TERMINAL BLOCK	ACS800 MD
0320	-R10.1	3ABD00017299	TIME RELAY	CT-ERS ICO
				130 X 266MM
				FOR CDP PANEL
				3M, CROSS, RMIO/CDP312R
				RMIO-02
				4CH
				PROFIBUS DP ADAPTER
				SYSTEM SOFTWARE
				X1(2)
				X11: 1-6
				0.05S-300H

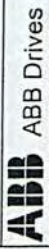


Based on	Prepared	Hui Guohua	Type	3ABDC080069DU04003
Resp. dept.	Approved	LI Shipping	Unit	Fun.=
Cust. Doc. No	Project			
ABB Ref. No	Customer			
Item Number	Sort String	Comp. Qty	Description and Text	
0330	-K11.1	1	RELAY KIT	CR-M230AC3L+BASE+RC
0010		1	RELAY	CR-M230AC3L
0020		1	RELAY SOCKET	CR-M3SS
0030		1	RELAY RC ELEMENT	CR-P/M 52C
0040		1	RELAY HOLDER	CR-MH
0340	-F12	1	PROTECTION SWITCH	S251S-K4
0350	(-F12)	1	AUXILIARY CONTACT	S250-H11
0360	-Y10	1	FAN	W2E 143-AA09-01
0370	(-Y10)	1	FINGER GUARD	LZ36
0380	-F10	1	PROTECTION SWITCH	S251S-K2
0390	-X25	1	TERMINAL BLOCK	ACS800 MD
0400	-X125.1	1	CONNECTOR	STV S 9 SB
0410	-X125.1	1	CONNECTOR	STV S 9 SS
0420	-X111.1	1	CONNECTOR	STV S 7 SB
0430	-X111.1	1	CONNECTOR	STV S 7 SS
0440	X111.2	1	CONNECTOR	STV S 7 SB
0450	-X111.2	1	CONNECTOR	STV S 7 SS
	-X50.1	1	CONNECTOR	STV S 9 SB
	-X50.2	1	CONNECTOR	STV S 9 SB



Doc. Identity	Rev	Lg	Kind	Reference Des.	Type	Title	Customer's Doc. Identity	File	Rev.
3ABDC080069-MP2/1	A		EFS2	=14, +14.1	Product circuit diagram	ACS800-107 Drive Unit Charging circuit Charging fuse switch 3xR8i		=14-1	
3ABDC080069-MP2/2	A		EFS2	=14, +14.1	Product circuit diagram	ACS800-107 Drive Unit 3xR8i Switch fuse Common motor terminals		=14-2	
3ABDC080069-MP2/10	A		EFS2	=14, +14.2	Product circuit diagram	ACS800-107 Drive Unit R8i-6xR8i, UPS Switch fuse		=14-10	
3ABDC080069-MP2/12	A		EFS2	=14, +14	Product circuit diagram	ACS800-107 Drive Unit 3xR8i Fan unit		=14-12	
3ABDC080069-MP2/13	A		EFS2	=14, +14.2	Product circuit diagram	ACS800-107 Drive Unit R8i-3xR8i Fan control relays		=14-13	
3ABDC080069-MP2/17	A		EFS2	+14.2, =14	Product circuit diagram	ACS800-107 Drive Unit 2-12xR8i RMIO-02 CDP+NLMD+RDCO-0X+RAPI		=14-17	
3ABDC080069-MP2/18	A		EFS2	=14, +14.2	Product circuit diagram	ACS800-107 Drive Unit R8i-1-3xR8i -X2 OESA		=14-18	

Based on	Prepared	Guohua Hui
Replaces	Approved	Li Shipping
Replaced by		
Standard		
Type code		3ABDC080069-MP2-D
Rev. Ind.		
Lang.		
Sheet		
of		





Doc. Identity	Rev	Lg	Kind	Reference Des.	Type	Title	Customer's Doc. Identity	File	Rev.
3ABDC080069-MP2/19	A		EFS2	=14, +14.2	Product circuit diagram	ACS800-107 Drive Unit PPCS Branching unit APBU-44, -A415, 4 units		=14-19	
3ABDC080069-MP2/20	A		EFS2	=14, +14.2	Product circuit diagram	ACS800-107 Drive Unit Profibus Adapter RPBA-01, Option 1		=14-20	

Based on  
Replaces  
Replaced by  
Standard

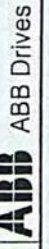
Prepared 2/3/2008  
Approved 2/3/2008

Guohua Hui  
LI Shipping

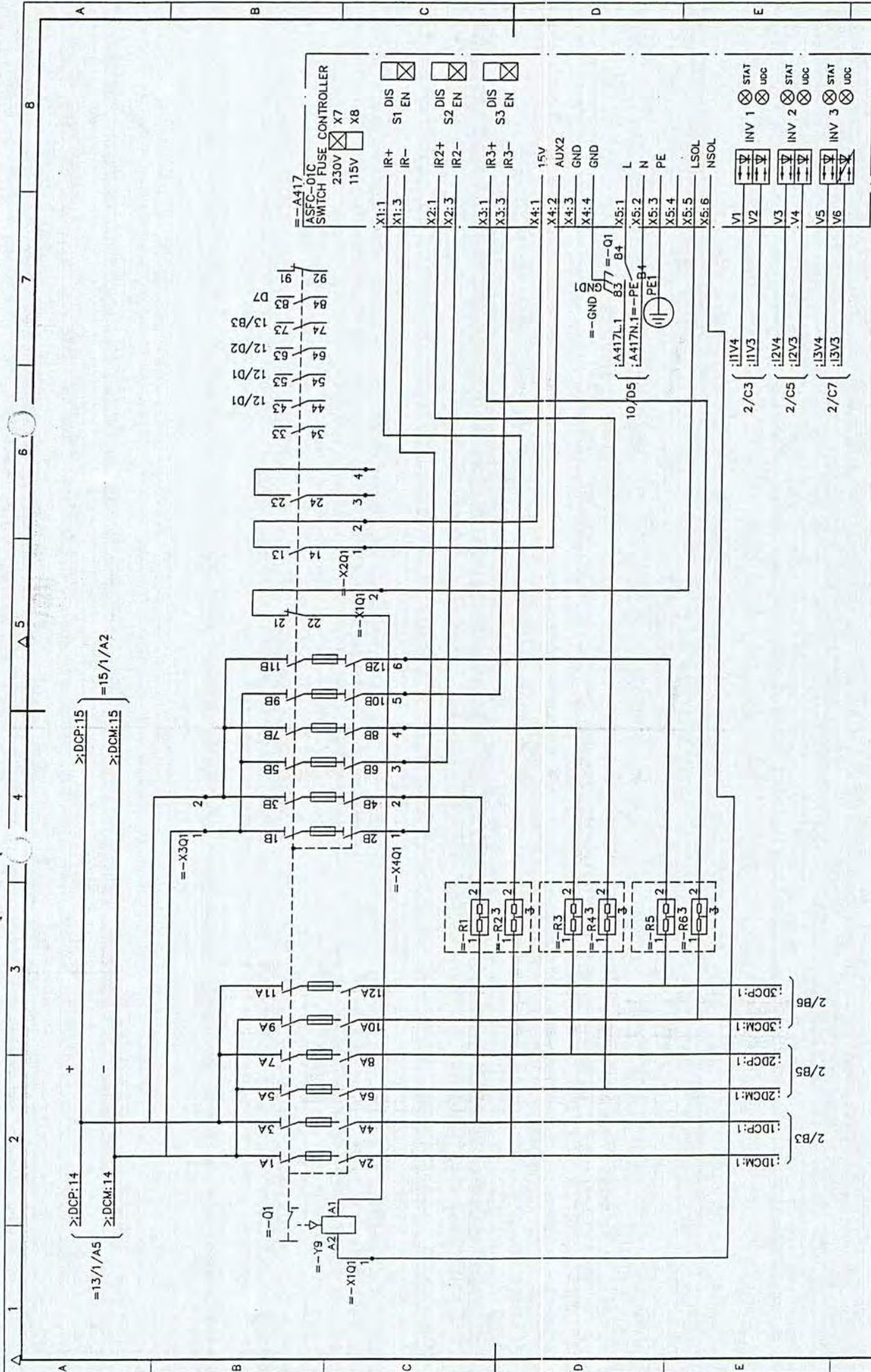
Type code  
3ABDC080069-MP2-D

Rev. Ind.

Lang.  
Sheet  
of







Cust. Doc. No.  
Customer

Prepared 02.02.2008  
Approved 03.02.2008  
Project

Hui Guohua  
Li Shipping

Title ACS800-107 Drive Unit  
Charging circuit  
Charging fuse switch 3xRBI

Item des. = 14  
+ 14.1

Resp.dept. AE Rev.ind. A Lang.  
Doc. No. 3ABDC080069-MP2 Sheet 1  
Cont. 2



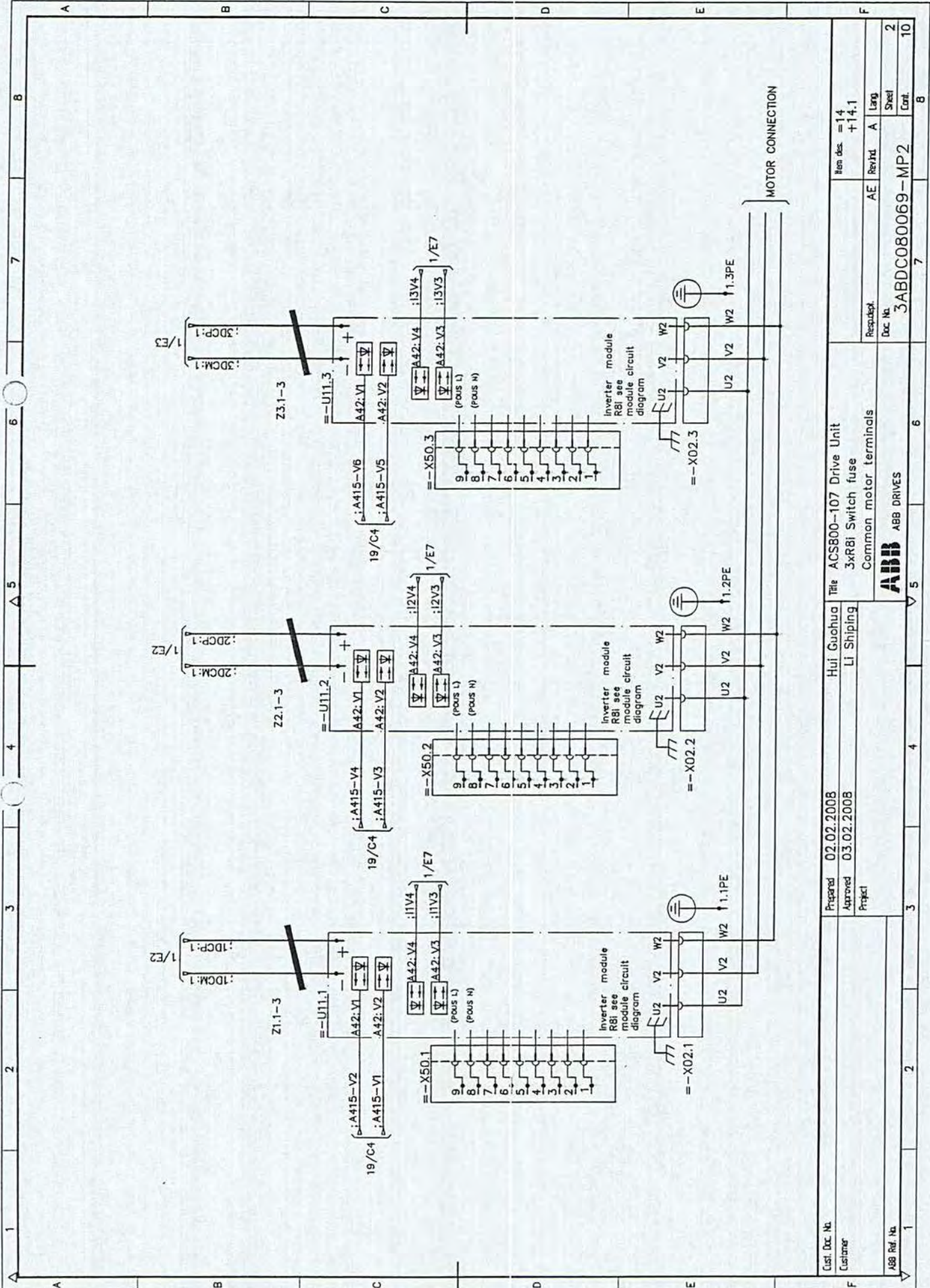


ABB Ref. No. 1

Customer 2

Prepared 02.02.2008 3

Approved 03.02.2008 4

Project 5

Hui Guohua 6

Li Shiping 7

3ABB0800069-MP2 8

Common motor terminals 9

3ABDC0800069-MP2 10

Resubst. Doc. No. 11

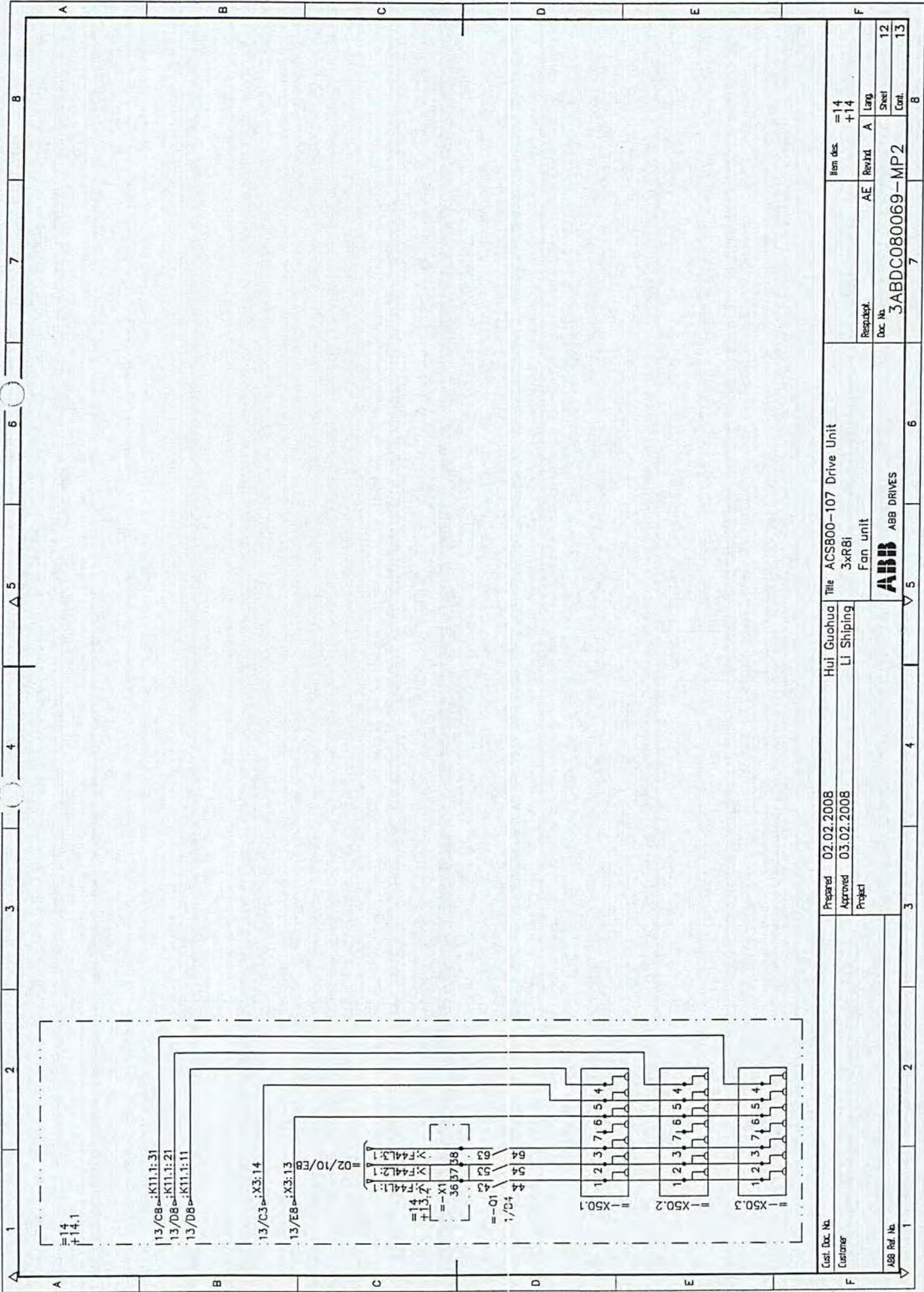
Item des. = 14 +14.1 Lang Sheet Cont. 10

8









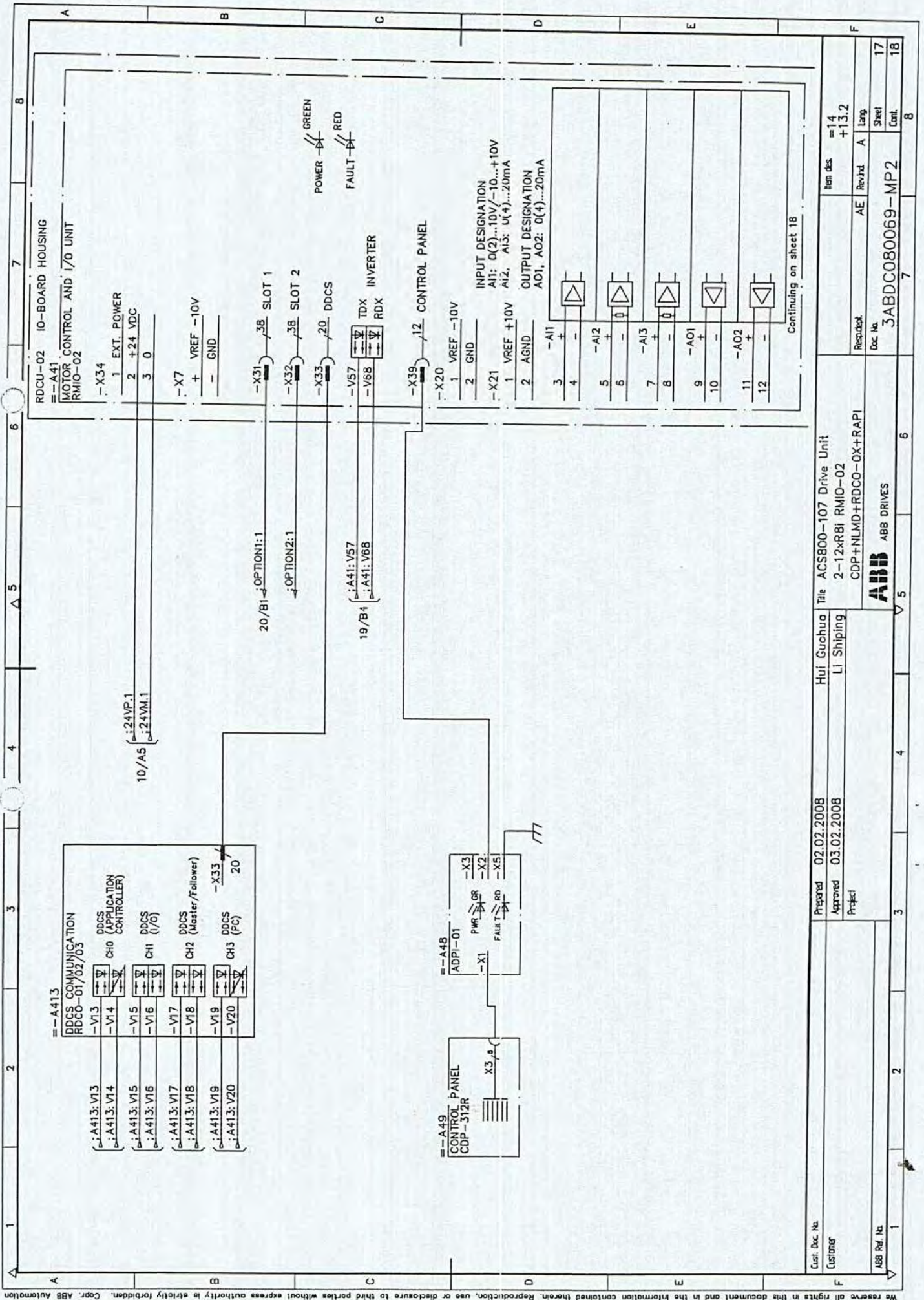
We reserve all rights in the document and in the information contained therein. Reproduction, use or disclosure to third parties without express authority is strictly forbidden. Copr. ABB Automation

Cust. Doc. No.	Prepared	02.02.2008	Huji Guohua	Title	ACS800-107 Drive Unit	Item des.	=14
Customer	Approved	03.02.2008	Li Shipping			+14	+14
ABB Ref. No.	Project					AE	Rev'td A
						3ABDC080069-MP2	Larg
						Doc. No.	Sheet
							Cont.
							12
							13
							8



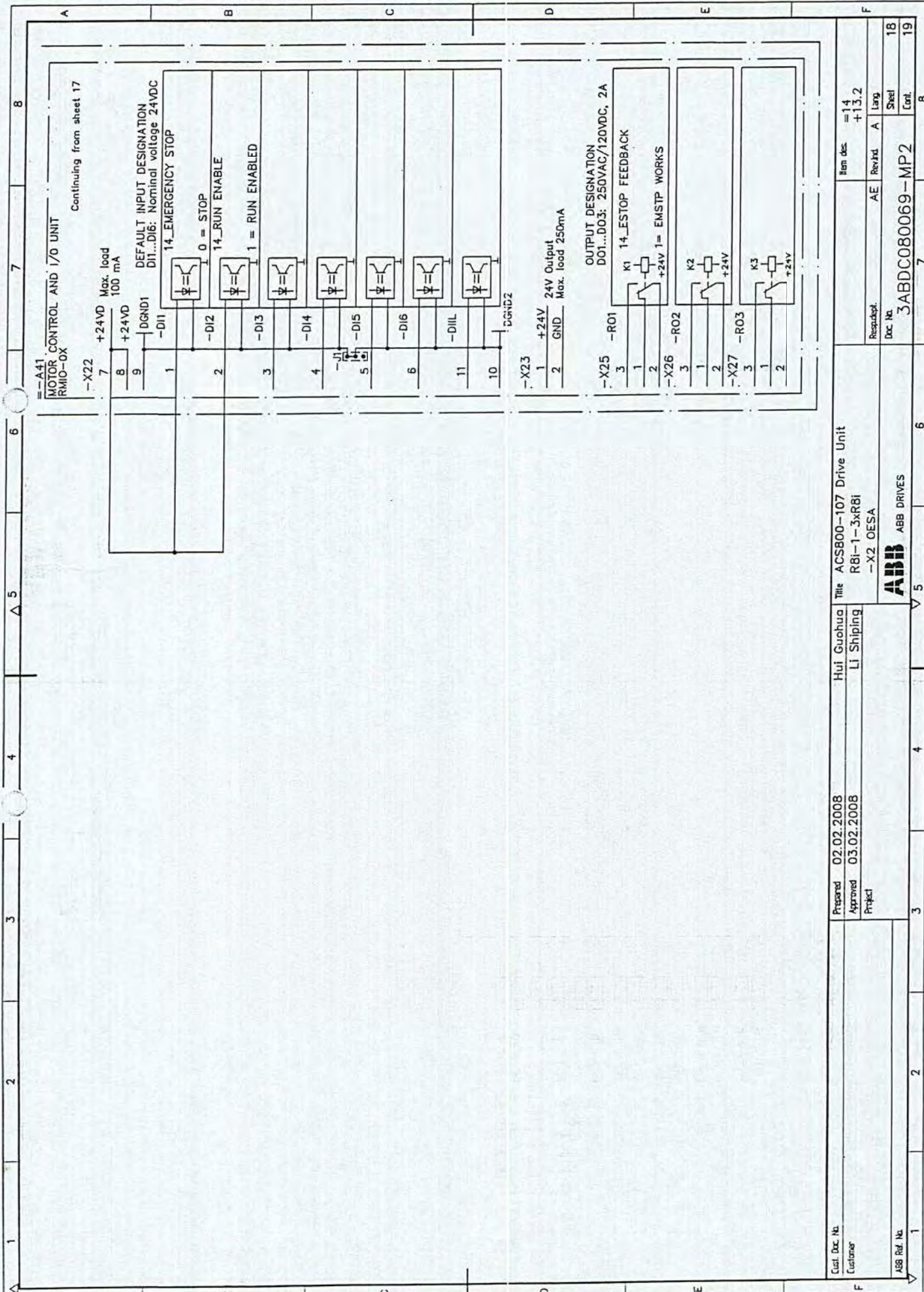






Cust. Doc. No. Customer	Prepared 02.02.2008	Hui Guchua	Title ACS800-107 Drive Unit	Item des. =14
ABB Ref. No.	Approved 03.02.2008	Li Shipping	2-12xR81 RMIO-02	+13.2
	Project		CDP+NLMD+RDCO-0X+RAPI	
			<b>ABB</b> ABB DRIVES	Rev/rd. A
				Lang
				Sheet
				Cont.
			3ABDC080069-MP2	17
				18





Cust. Doc. No. Customer	Prepared Approved Project	Hui Guohua LI Shipping	Title ACS800-107 Drive Unit R81-1-3xR81 -X2 OESA	Item des. =14 +13.2
ABB Ref. No.	3	4	5	6
			ABB ABB DRIVES	7
			Responsible Doc. No.	8
			AE Revizd A Lang	9
			3ABDC080069-MP2	10
				11
				12
				13
				14
				15
				16
				17
				18
				19

Motor Control and I/O Unit  
Continuing from sheet 17

MAX. LOAD 100 mA

DEFAULT INPUT DESIGNATION  
DI1...DI6: Nominal voltage 24VDC

14\_EMERGENCY STOP

0 = STOP

14\_RUN\_ENABLE

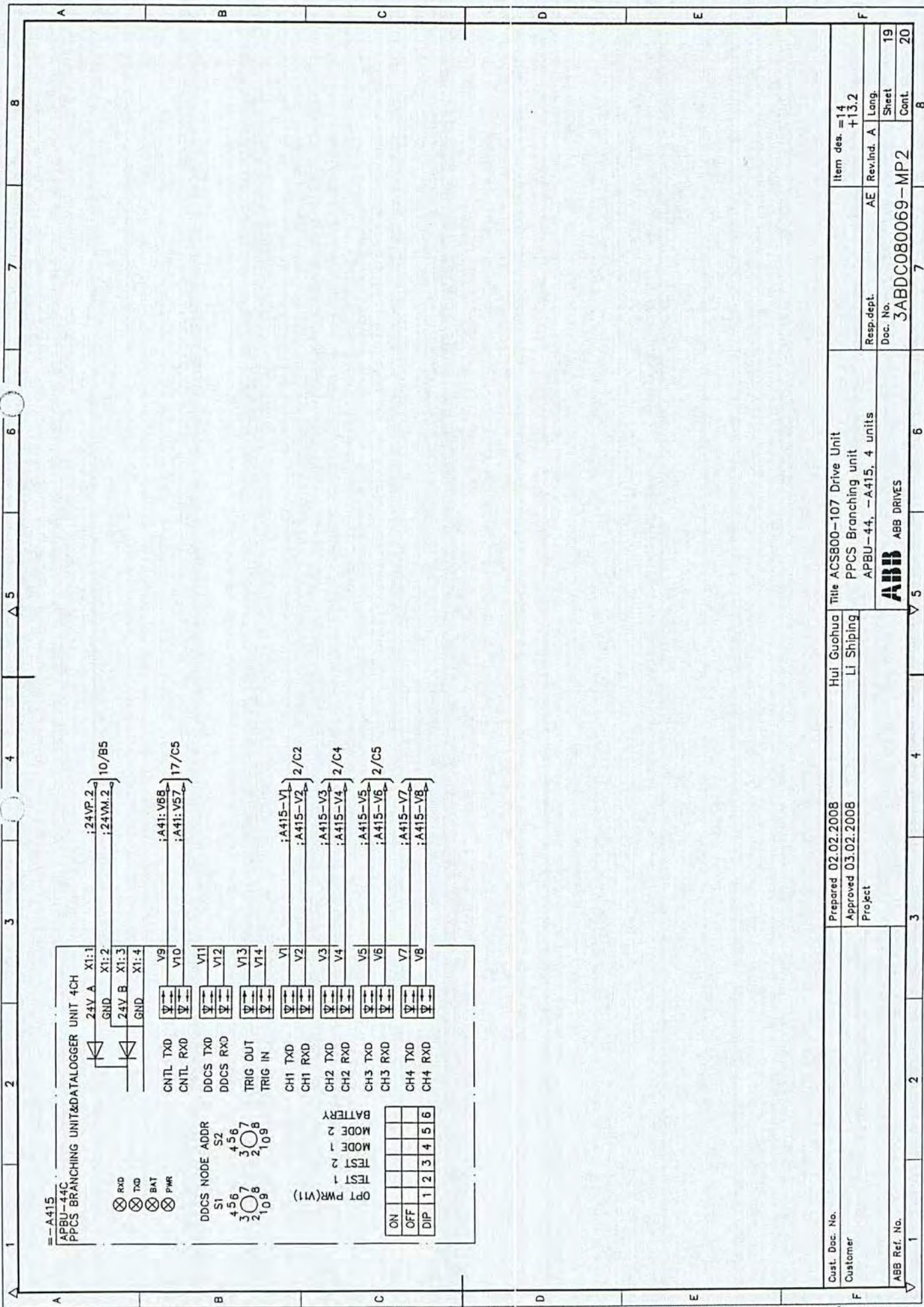
1 = RUN\_ENABLED

OUTPUT DESIGNATION  
DOI...DO3: 250VAC/120VDC, 2A

14\_ESTOP\_FEEDBACK

EMSTP WORKS





Cust. Doc. No.	Prepared 02.02.2008	Hui Guohua	Title ACS800-107 Drive Unit	Item des. = 14
Customer	Approved 03.02.2008	LI Shipping	PPCS Branching unit	+13.2
ABB Ref. No.	Project	ABB ABB DRIVES	APBU-44, -A415, 4 units	AE Rev.ind. A Lang.
				Doc. No.
				3ABDC080069-MP2
				Sheet
				19
				Cont.
				20







To Designation			Terminal bar			From Designation			Document ref.			Rev. No.					
Loc.	Fun.	Prod	Term	CableWire	Core	L	Designation	Term	L	CableWire	Core	Loc.	Fun.	Prod.	Term	Document ref.	Rev. No.
+14.2	=14	=14-X25	204/3	H05V-K/BU/1.0			=14-X1	1	A							3ABDC080069-MP2/10	
				/		B	=14-X1	2	A							3ABDC080069-MP2/10	
+14.2	=14	=14-X1	30/3	H05V-K/BU/1.0		B	=14-X1	3		H05V-K/BU/1.0		+14.2	=14	=14-G10	N		
				/		C	=14-X1	11		H05V-K/BK/1.0		+14.2	=14	=14-F11	2	3ABDC080069-MP2/10	
				/		C	=14-X1	11		H05V-K/BK/1.0		+14.2	=14	=14-G10	L	3ABDC080069-MP2/10	
				/		C	=14-X1	12	D	/						3ABDC080069-MP2/10	
				/		E	=14-X1	13	D	/						3ABDC080069-MP2/10	
				/		E	=14-X1	14	/							3ABDC080069-MP2/10	
+14.2	=14	=14-F12	1	H07V-K/BK/6.0			=14-X1	15	/								
+14.2	=14	=14-F11	1	H07V-K/BK/6.0			=14-X1	15		H05V-K/BK/1.0		+14.2	=14	=14-X25	214/3		
+14.2	=14	=14-X11.2	4/2	H05V-K/BK/1.0			=14-X1	27		H05V-K/BK/1.0		+14.2	=14	=14-K11.1	14	3ABDC080069-MP2/13	
				H05V-K/BK/1.0			=14-X1	27		H05V-K/BK/1.0		+14.2	=14	=14-F12	2	3ABDC080069-MP2/13	
+14.2	=14	=14-X11.2	3/2	H05V-K/BK/1.0			=14-X1	28		H05V-K/BK/1.0		+14.1	=14	=14-Q1	73	3ABDC080069-MP2/13	
+14.1	=14	=14-X50.1	5/2	H05V-K/BK/1.0			=14-X1	29	/								
+14.2	=14	=14-K10.1	A1	H05V-K/BK/1.0			=14-X1	29		H05V-K/BK/1.0		+14.1	=14	=14-Q1	74		
+14.2	=14	=14-K10.1	A2	H05V-K/BU/1.0			=14-X1	30		H05V-K/BU/1.0		+14.1	=14	=14-X50.1	6/2	3ABDC080069-MP2/13	
+14.2	=14	=14-K11.1	A2	H05V-K/BU/1.0			=14-X1	30		H05V-K/BU/1.0		+14.2	=14	=14-X1	3/4	3ABDC080069-MP2/13	
+14.2	=14	=14-K11.1	11	H05V-K/BK/1.0			=14-X1	31		H05V-K/BK/1.0		+14.1	=14	=14-X50.1	4/2	3ABDC080069-MP2/13	
+14.2	=14	=14-K11.1	21	H05V-K/BK/1.0			=14-X1	32		H05V-K/BK/1.0		+14.1	=14	=14-X50.2	4/2	3ABDC080069-MP2/13	
+14.2	=14	=14-K11.1	31	H05V-K/BK/1.0			=14-X1	33		H05V-K/BK/1.0		+14.1	=14	=14-X50.3	4/2	3ABDC080069-MP2/13	
+16.2	=16	=16-X125.1	7/1	H05V-K/BK/1.0			=14-X1	36		H05V-K/BK/1.0		+14.1	=14	=14-Q1	43	3ABDC080069-MP2/12	
+16.2	=16	=16-X125.1	8/1	H05V-K/BK/1.0			=14-X1	37		H05V-K/BK/1.0		+14.1	=14	=14-Q1	53	3ABDC080069-MP2/12	
+16.2	=16	=16-X125.1	9/1	H05V-K/BK/1.0			=14-X1	38		H05V-K/BK/1.0		+14.1	=14	=14-Q1	63	3ABDC080069-MP2/12	

Cust. Doc. No.

Customer

Prepared 2/3/2008

Approved 2/3/2008

Project

Guohua Huiji Title

Li Shipping

Terminal Report

Item des.

ABB Ref. No.

ABB ABB Drives

Resp. dept.

Doc. No.

Rev.ind.

Lang.

3ABDC080069-MP2-X

Sheet 1 of 4



To Designation			Terminal bar			From Designation			Rev. No.								
Loc.	Fun.	Prod	Term	Cable/Wire	Core	L	Designation	Term		L	Cable/Wire	Core	Loc.	Fun.	Prod.	Term	Document ref.
+14.2	=14	=14-G10	-	H05V-K/GNVE/1.0			=14-X1	PE1		H07V-K/GNVE/4.0		+14.2	=14	=14-10PE	1PE	3ABDC080069-MP2/10	
				/			=14-X1	PE2		H07V-K/GNVE/2.5		+14.2	=14	=14-G10	PE		
+14.1	=14	=14-A417	X5:6	H05V-K/BK/0.75			=14-X1Q1	PE3		H05V-K/GNVE/1.0		+14.2	=14	=14-Y10	PE	3ABDC080069-MP2/10	
+14.1	=14	=14-A417	X5:5	H05V-K/BK/0.75			=14-X1Q1	2		/							
+14.1	=14	=14-A417	X4:2	H05V-K/BK/0.75			=14-X2Q1	1		/							
+14.1	=14	=14-A417	X4:1	H05V-K/BK/0.75			=14-X2Q1	2		/							
				/			=14-X2Q1	3		/							
				/			=14-X2Q1	4		/							
+14.1	=14	=14-Q1	1A	H3RR-K/B/2_5			=14-X3Q1	1		/							
+14.1	=14	=14-Q1	3A	H3RR-K/B/2_5			=14-X3Q1	2		/							
+14.1	=14	=14-A417	X1:3	H07V-K/BK/2.5			=14-X4Q1	1		/							
+14.1	=14	=14-R1	2	H07V-K/BK/2.5			=14-X4Q1	2		/							
+14.1	=14	=14-A417	X2:3	H07V-K/BK/2.5			=14-X4Q1	3		/							
+14.1	=14	=14-R3	2	H07V-K/BK/2.5			=14-X4Q1	4		/							
+14.1	=14	=14-A417	X3:3	H07V-K/BK/2.5			=14-X4Q1	5		/							
+14.1	=14	=14-R5	2	H07V-K/BK/2.5			=14-X4Q1	6		/							
+14.2	=14	=14-A41.X34	3/2	/			=14-X11	1	F	/		+14.2	=14	=14-G10	-	3ABDC080069-MP2/10	
				/			=14-X11	2	F	/		+14.2	=14	=14-A415	X1:2	3ABDC080069-MP2/10	
				/			=14-X11	3		/							
+14.2	=14	=14-A41.X34	2/2	/			=14-X11	4	H	/		+14.2	=14	=14-G10	+	3ABDC080069-MP2/10	
				/			=14-X11	5	H	/		+14.2	=14	=14-A415	X1:1	3ABDC080069-MP2/10	
				/			=14-X11	6		/							

Cust. Doc. No.	2/3/2008	Prepared	Guohua Hui	Terminal Report	Item des.
Customer	2/3/2008	Approved	Li Shipping	Resp. dept.	Rev. ind.
ABB Ref. No.		Project		Doc. No.	3ABDC080069-MP2-X
			<b>ABB</b> ABB Drives	Lang	A
				Sheet	2
				of	4



To Designation			Terminal bar			From Designation			Rev. No.							
Loc.	Fun.	Prod.	Term	Cable/Wire	Core	L	Designation	Term		L	Cable/Wire	Core	Loc.	Fun.	Prod.	Term
				/			=14-X25	201		H07V-K/BU/10		+13.2	=13	=13-X25	201/2	3ABDC080069-MP2/10
				/			=14-X25	201		H05V-K/BU/1.0		+14.2	=14	=14-Y10	N	3ABDC080069-MP2/10
				H05V-K/BU/1.0			=14-X25	204		H05V-K/BU/1.0		+14.2	=14	=14-X1	1/2	3ABDC080069-MP2/10
+14.2	=15	=15-X1	1/2	H05V-K/BU/1.0			=14-X25	204		H07V-K/BU/10		+13.2	=13	=13-X25	204/2	3ABDC080069-MP2/10
				/			=14-X25	211		H07V-K/BK/6.0		+14.2	=14	=14-F10	1	3ABDC080069-MP2/10
				/			=14-X25	211		H07V-K/BK/10		+13.2	=13	=13-X25	211/2	3ABDC080069-MP2/10
				H05V-K/BK/1.0			=14-X25	214		H05V-K/BK/1.0		+14.2	=14	=14-X1	15/3	3ABDC080069-MP2/10
+14.2	=15	=15-X1	15/1	H05V-K/BK/1.0			=14-X25	214		H05V-K/BK/1.0		+14.2	=14	=14-X11.1	1/2	3ABDC080069-MP2/10
+14.1	=14	=14-Q1	44	H07V-K/BN/1.5			=14-X50.1	1		H07V-K/BN/1.5		+14.1	=14	=14-X50.2	1/2	3ABDC080069-MP2/12
+14.1	=14	=14-Q1	54	H07V-K/BK/1.5			=14-X50.1	2		H07V-K/BK/1.5		+14.1	=14	=14-X50.2	2/2	3ABDC080069-MP2/12
+14.1	=14	=14-Q1	64	H07V-K/WH/1.5			=14-X50.1	3		H07V-K/WH/1.5		+14.1	=14	=14-X50.2	3/2	3ABDC080069-MP2/12
+14.2	=14	=14-X1	31/1	H05V-K/BK/1.0			=14-X50.1	4		/		+14.1	=14			
+14.2	=14	=14-X1	29/2	H05V-K/BK/1.0			=14-X50.1	5		H05V-K/BK/1.0		+14.1	=14	=14-X50.2	5/2	3ABDC080069-MP2/12
+14.2	=14	=14-X1	30/1	H05V-K/BU/1.0			=14-X50.1	6		H05V-K/BU/1.0		+14.1	=14	=14-X50.2	6/2	3ABDC080069-MP2/12
				/			=14-X50.1	7		/						
+14.1	=14	=14-X50.1	1/1	H07V-K/BN/1.5			=14-X50.2	1		H07V-K/BN/1.5		+14.1	=14	=14-X50.3	1/2	3ABDC080069-MP2/12
+14.1	=14	=14-X50.1	2/1	H07V-K/BK/1.5			=14-X50.2	2		H07V-K/BK/1.5		+14.1	=14	=14-X50.3	2/2	3ABDC080069-MP2/12
+14.1	=14	=14-X50.1	3/1	H07V-K/WH/1.5			=14-X50.2	3		H07V-K/WH/1.5		+14.1	=14	=14-X50.3	3/2	3ABDC080069-MP2/12
+14.2	=14	=14-X1	32/1	H05V-K/BK/1.0			=14-X50.2	4		/						
+14.1	=14	=14-X50.1	5/1	H05V-K/BK/1.0			=14-X50.2	5		H05V-K/BK/1.0		+14.1	=14	=14-X50.3	5/2	3ABDC080069-MP2/12
+14.1	=14	=14-X50.1	6/1	H05V-K/BU/1.0			=14-X50.2	6		H05V-K/BU/1.0		+14.1	=14	=14-X50.3	6/2	3ABDC080069-MP2/12
				/			=14-X50.2	7		/						
+14.1	=14	=14-X50.2	1/1	H07V-K/BN/1.5			=14-X50.3	1		/						

Cust. Doc. No	Prepared	2/3/2008	Guohua Hui	Title	Terminal Report	Item des.
Customer	Approved	2/3/2008	LI Shipping		Resp. dept.	Rev.ind.
ABB Ref. No	Project				Doc. No.	Lang
					3ABDC080069-MP2-X	A
					3	Sheet
					4	of



ABB Drives



To Designation			Terminal bar			From Designation			Document ref.			Rev. No.						
Loc.	Fun.	Prod	Term	Cable/Wire	Core	L	Designation	Term	L	Cable/Wire	Core	Loc.	Fun.	Prod.	Term	Document ref.	Rev. No.	
+14.1	=14	=14-X50.2	2/1	H07V-K/BK/1.5			=14-X50.3	2	/									
+14.1	=14	=14-X50.2	3/1	H07V-K/W/H/1.5			=14-X50.3	3	/									
+14.2	=14	=14-X1	33/1	H05V-K/BK/1.0			=14-X50.3	4	/									
+14.1	=14	=14-X50.2	5/1	H05V-K/BK/1.0			=14-X50.3	5	/									
+14.1	=14	=14-X50.2	6/1	H05V-K/BU/1.0			=14-X50.3	6	/									
				/			=14-X50.3	7	/									
+14.2	=14	=14-X25	214/1	H05V-K/BK/1.0			=14-X111.1	1	H07V-K/BK/10			+13.2	=13	=13-X25	214/2	3ABDC080069-MP2/10		
				/			=14-X111.1	2	/									
				/			=14-X111.1	3	/									
				/			=14-X111.1	4	/									
				/			=14-X111.1	5	H07V-K/BK/6.0			+02.1	=02	-X1	20/2	3ABDC080069-BU2/01		
				/			=14-X111.1	6	/									
+14.2	=14	=14-X1	26/2	H05V-K/BK/1.0			=14-X111.2	3	H05V-K/BK/1.0			+13.2	=13	=13-X111.2	3/2	3ABDC080069-MP2/13		
+14.2	=14	=14-X1	27/4	H05V-K/BK/1.0			=14-X111.2	4	H05V-K/BK/1.0			+13.2	=13	=13-X111.2	4/2	3ABDC080069-MP2/13		
+02.1	=02	=02-F43	2	H05V-K/BK/1.0			=14-X125.1	1	H05V-K/BK/1.0			+13.2	=13	=13-X1	36/2	3ABDC080069-DSU2/10		
+02.1	=02	=02-F43	4	H05V-K/BK/1.0			=14-X125.1	2	H05V-K/BK/1.0			+13.2	=13	=13-X1	37/2	3ABDC080069-DSU2/10		
+02.1	=02	=02-F43	6	H05V-K/BK/1.0			=14-X125.1	3	H05V-K/BK/1.0			+13.2	=13	=13-X1	38/2	3ABDC080069-DSU2/10		
+02.1	=02	=02-F45	2	H05V-K/BK/1.0			=14-X125.1	4	H05V-K/BK/1.0			+14.2	=15	=15-X1	36/2	3ABDC080069-DSU2/10		
+02.1	=02	=02-F45	4	H05V-K/BK/1.0			=14-X125.1	5	H05V-K/BK/1.0			+14.2	=15	=15-X1	37/2	3ABDC080069-DSU2/10		
+02.1	=02	=02-F45	6	H05V-K/BK/1.0			=14-X125.1	6	H05V-K/BK/1.0			+14.2	=15	=15-X1	38/2	3ABDC080069-DSU2/10		
+02.1	=02	=02-F44	2	H05V-K/BK/1.0			=14-X125.1	7	H05V-K/BK/1.0			+16.2	=16	=16-X125.1	7/2	3ABDC080069-DSU2/10		
+02.1	=02	=02-F44	4	H05V-K/BK/1.0			=14-X125.1	8	H05V-K/BK/1.0			+16.2	=16	=16-X125.1	8/2	3ABDC080069-DSU2/10		
+02.1	=02	=02-F44	6	H05V-K/BK/1.0			=14-X125.1	9	H05V-K/BK/1.0			+16.2	=16	=16-X125.1	9/2	3ABDC080069-DSU2/10		

Cust. Doc. No	2/3/2008	Prepared	2/3/2008	Guohua Hui	Terminal Report	Item des.	
Customer	2/3/2008	Approved	2/3/2008	LI Shipping	Resp. dept.	Rev. Ind.	A
Project		Project			Doc. No.	3ABDC080069-MP2-X	Lang
ABB Ref. No							Sheet
							of



ABB Drives



Based on	Prepared	Hui Guohua	Type	3ABDC080069DU04004
Resp. dept.	Approved	LI Shipping	Unit	Fun.=
Cust. Doc. No	Project			
ABB Ref. No	Customer			
Item Number	Sort String	Component number	Description and Text	Technical Data
0010	-Q1	3AFE64787047	FUSE SWITCH	OESL630V32D24V2, 230V
0020	(-Q1)	3AFE64673769	HRC FUSE LINK	170M8650
0030	(-Q1)	3AFE68326435	CHARGING FUSE	170M2673
0040	-R1	3AFE10028531	POWER RESISTOR	ZRF 30X167.5 S 33R
0050	-R2	3AFE10028531	POWER RESISTOR	ZRF 30X167.5 S 33R
0060	-R3	3AFE10028531	POWER RESISTOR	ZRF 30X167.5 S 33R
0070	-R4	3AFE10028531	POWER RESISTOR	ZRF 30X167.5 S 33R
0080	-R5	3AFE10028531	POWER RESISTOR	ZRF 30X167.5 S 33R
0090	-R6	3AFE10028531	POWER RESISTOR	ZRF 30X167.5 S 33R
0100	-A417	3AFE64649540	CHAR. CTRL BOARD	ASFC-01C
0110	-U11.1	3AFE68685192	ACS800-104-0580-7+E205+V991	R81, 690V 580KVA+DU/DT
0120	-U11.2	3AFE68685192	ACS800-104-0580-7+E205+V991	R81, 690V 580KVA+DU/DT
0130	-U11.3	3AFE68685192	ACS800-104-0580-7+E205+V991	R81, 690V 580KVA+DU/DT
0140	-X02.1	3AFE64698401	CONNECT. PLUG KI X02.1-2	INVERTER CONNECTOR
0150	-X02.2	3AFE64698401	CONNECT. PLUG KI X02.1-2	INVERTER CONNECTOR
0160	-X02.3	3AFE64698401	CONNECT. PLUG KI X02.1-2	INVERTER CONNECTOR
0170	-Z1.1-3	3AFE64308998	COMM. MODE CHOKE	T60006-L2102-W468
0180	-Z2.1-3	3AFE64308998	COMM. MODE CHOKE	T60006-L2102-W468
0190	-Z3.1-3	3AFE64308998	COMM. MODE CHOKE	T60006-L2102-W468
0200	-G10	3ABD00010604	POWER SUPPLY	DR-75-24
0210	-F11	3AFE35077766	PROTECTION SWITCH	S251S-K4
0220	-A49	3AFE64378660	CONTROL PANEL	CDP-312R
0230	-A48	3AFE64532588	FILTERING BOARD	ADPI-01
0240	(-A48)	3AFE10010390	PANEL PLUG CONNEX	ACS200-MP-010A
0250	(-A48)	3AFE64750844	GROUNDING WIRE	CDP-GND
0260	(-A48)	3AFE68228344	CDP PANEL	ACS800 MD
0270	(-A48)	3AFE68228654	EMC SHIELD	ACS800 MD
0280	(-A48)	3AFE64644521	FLAT CABLE	RPLC-03C
0290	-A41	3AFE64607901	DRIVE CTRL UNIT	RDCU-02C
0300	-A415	3AFE64669982	BRANCHING UNIT	APBU-44C
0310	-A411	3AFE64606859	DATA INTERFACE	RPBA-01
0320	-N	3AFE64663224	SOFTWARE	AMXR 7. X
0330	-F12	3AFE35077766	PROTECTION SWITCH	S251S-K4
				4A, 230V/400V 6KA
				4*20CHARS, 16 BUTTONS
				DIAGNOSTICS AND INTERFACE
				PHONE CONNEXTOR L=34MM
				130 X 266MM
				FOR CDP PANEL
				3M, CROSS, RMIO/CDP312R
				RMIO-02
				4CH
				PROFIBUS DP ADAPTER
				SYSTEM SOFTWARE
				4A, 230V/400V 6KA



Based on		Prepared	Hui Guohua	Type	3ABDC080069DU04004
Resp. dept.	AE	Approved	Li Shipping	Unit	Fun.=
Cust. Doc. No				Project	Loc.+
ABB Ref. No			<b>ABB</b> ABB Drive	Customer	Lang. EN
Item Number	Sort String	Comp. Qty	Component number	Description and Text	Technical Data
0340	(-F12)	1	3ABD00012170	AUXILIARY CONTACT S250-H11	GH S250 1916 R0011
0350	-K10.1	1	3ABD00017299	TIME RELAY	0.05S-300H
0360	-K11.1	1	3ABD00018091	RELAY KIT	230VAC 3CO 10A
0010		1	3ABD00018021	RELAY	230 VAC 3 C/O
0020		1	3ABD00018026	RELAY SOCKET	STANDARD SOCKET FOR 3 C/O
0030		1	3ABD00018025	RELAY RC ELEMENT	RC ELEMENT, 110-240 VAC
0040		1	3ABD00018028	RELAY HOLDER	HOLDER FOR CR-M SOCKET
0370	-A413	1	3AFE64492454	DDCS COMMUN. OPTI RDCO-02C	
0380	-X1	1	3AFE68486009	TERMINAL BLOCK	X1(2)
0390	-X11	1	3AFE68351391	TERMINAL BLOCK	X11: 1-6
	-X50.1	1	3AFE64674081	CONNECTOR	
	-X50.2	1	3AFE64674081	CONNECTOR	
	-X50.3	1	3AFE64674081	CONNECTOR	



Doc. Identity	Rev	Lg	Kind	Reference Des.	Type	Title	Customer's Doc. Identity	File	Rev.
3ABDC080069-RT/1	A		EFS2	=15, +15.1	Product circuit diagram	ACS800-107 Drive Unit Charging circuit Charging fuse switch 2xR8i	=15-1		
3ABDC080069-RT/2	A		EFS2	=15, +15.1	Product circuit diagram	ACS800-107 Drive Unit 2xR8i Switch fuse Common motor terminals	=15-2		
3ABDC080069-RT/10	A		EFS2	=15, +14.2	Product circuit diagram	ACS800-107 Drive Unit R8i-6xR8i, UPS Switch fuse	=15-10		
3ABDC080069-RT/12	A		EFS2	=15, +15	Product circuit diagram	ACS800-107 Drive Unit 2xR8i Fan unit	=15-12		
3ABDC080069-RT/13	A		EFS2	=15, +14.2	Product circuit diagram	ACS800-107 Drive Unit R8i-3xR8i Fan control relays	=15-13		
3ABDC080069-RT/17	A		EFS2	=15, +14.2	Product circuit diagram	ACS800-107 Drive Unit 2-12xR8i RMIO-02 CDP+NLMD+RDCO-0X+RAPI	=15-17		
3ABDC080069-RT/18	A		EFS2	=15, +14.2	Product circuit diagram	ACS800-107 Drive Unit R8i-1-3xR8i -X2 OESA	=15-18		

Based on	Guohua Hui
Replaces	LI Shipping
Replaced by	
Standard	
Prepared	2/3/2008
Approved	2/3/2008
Type code	3ABDC080069-RT-D
Rev. Ind.	1
Lang.	Sheet
	of
	2



ABB ABB Drives