

Prepared	02.02.2008	Hui Guohua	Title	ACS800 607	Item des.	= 21 + 21.1
Approved	03.02.2008	Li Shipping	Braking Chopper (G90V) Unit 1	AE	Rev/rd	A
Customer				Doc. No.	3ABDC080069-BU1	Lang
ABB Ref. No.						Steel
						Cont.
						8

We reserve all rights in this document and in the information contained therein. Reproduction, use or disclosure to third parties without express authority is strictly forbidden. Copr. ABB Automation

Doc. Identity	Rev	Lg	Kind	Reference Des.	Type	Title	Customer's Doc. Identity	File	Rev.
3ABDC080069-BU1/01	A		EFS2	=21, +21.1	Product circuit diagram	ACS800 607 Braking Chopper (690V) Unit 1	=21-01		
3ABDC080069-BU1/02	A		EFS2	=21, +21.1	Product circuit diagram	ACS800 607 Braking Chopper (690V) Unit 2	=21-02		
3ABDC080069-BU1/03	A		EFS2	=21, +21.1	Product circuit diagram	ACS800 607 Braking Chopper (690V) Unit 3	=21-03		

Guohua Hui
LI Shipping

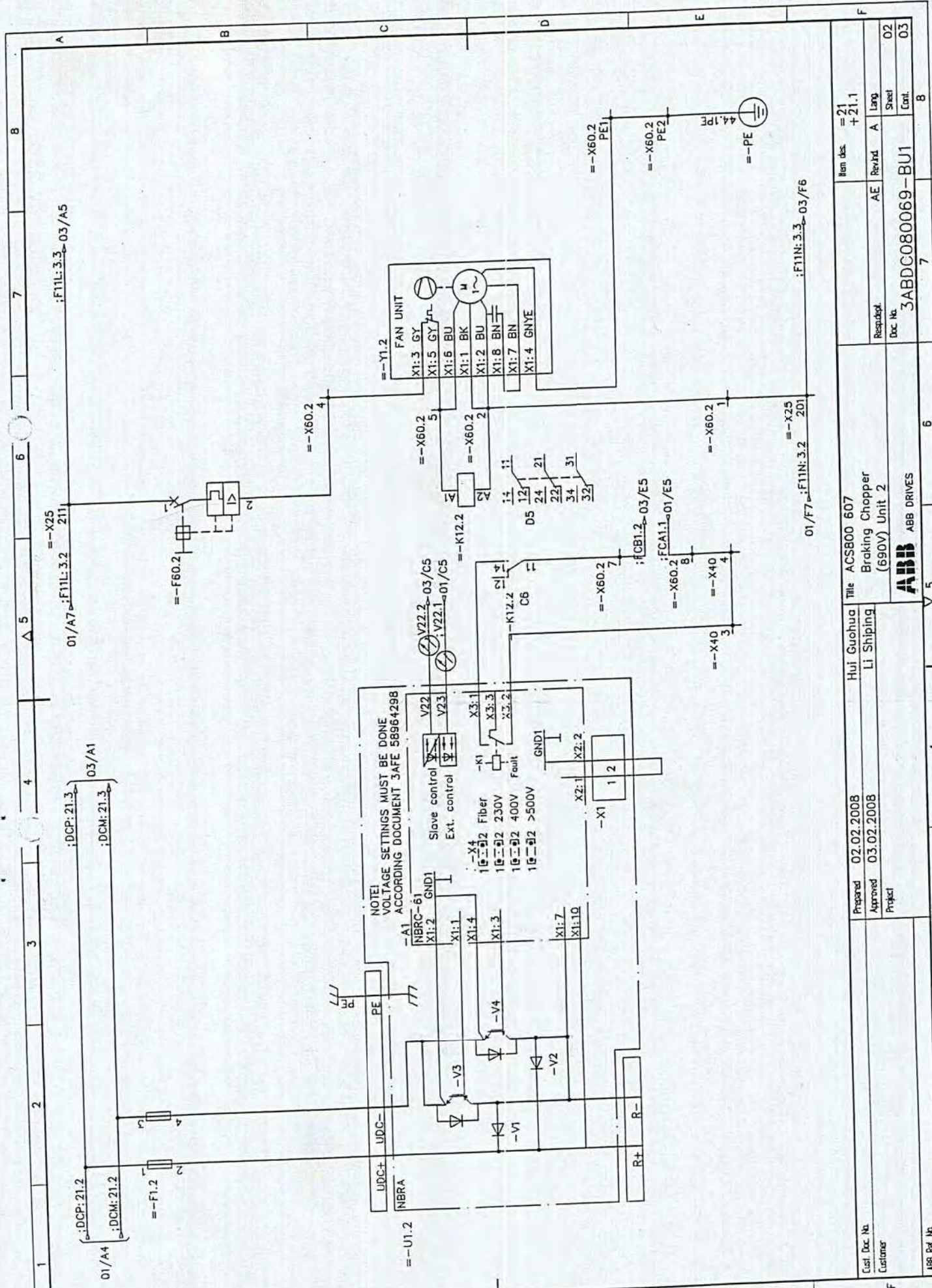
Prepared 2/3/2008
Approved 2/3/2008

Based on
Replaces
Replaced by
Standard

Type code
3ABDC080069-BU1-D

Rev. Ind.
Lang.
Sheet
of

ABB ABB Drives



Item des	= 21 + 21.1	8
Responsible	AE Rev'd A	Lang
Doc No.	3ABDC080069-BU1	Sheet
		Cont.
		02
		03
Customer	Hui Guohua	5
Approved	Li Shipping	4
Project	ABB DRIVES	3
Prepared	02.02.2008	2
Approved	03.02.2008	1
Title	ACS800 607 Braking Chopper (690V) Unit 2	
Doc No.	3ABDC080069-BU1	

To Designation				Terminal bar				From Designation				Rev. No.					
Loc.	Fun.	Prod	Term	CableWire	Core	L	Designation	Term	L	CableWire	Core	Loc.	Fun.	Prod.	Term	Document ref.	Rev. No.
	=F11N: 3	=F11N.3		/			=21-X25	201		H07V-K/BU/2.5		+21.1	=21	=21-X60.1	1/3	3ABDC080069-BU1/01	
+22.1	=22	=22-X60.1	4/3	H05V-K/BK/1.0			=21-X25	201		/						3ABDC080069-BU1/01	
+22.1	=22	=22-K12.1	11	H05V-K/BK/1.0			=21-X25	201		/						3ABDC080069-BU1/01	
+11.2	=11	=11-X111.2	5/2	H05V-K/BK/1.0			=21-X25	211		H07V-K/BK/4.0		+21.1	=21	=21-F60.1	1	3ABDC080069-BU1/01	
+22.1	=22	=22-X60.1	1/4	H05V-K/BK/1.0			=21-X25	211		H07V-K/BK/4.0		+21.1	=21	=21-F60.2	1	3ABDC080069-BU1/01	
				/			=21-X40	1		H07V-K/BK/1.5		+21.1	=21	=21-U1.1.A1	X3:2		
				/			=21-X40	2		H07V-K/BK/1.5		+21.1	=21	=21-X60.1	8/3		
				/		A	=21-X40	3		H07V-K/BK/1.5		+21.1	=21	=21-U1.2.A1	X3:2		
				/		A	=21-X40	4		H07V-K/BK/1.5		+21.1	=21	=21-X60.2	8/3		
				/		B	=21-X40	5		H07V-K/BK/1.5		+21.1	=21	=21-U1.3.A1	X3:2		
				/		B	=21-X40	6		H07V-K/BK/1.5		+21.1	=21	=21-X60.3	8/3		
				/		C	=21-X60.1	1		H07V-K/BU/2.5		+21.1	=21	=21-X25	201/1		
				/		C	=21-X60.1	1		H05V-K/BK/1.0		+21.1	=21	=21-X60.2	1/3		
+21.1	=21	=21-Y1.1	X1:2	H07V-K/BU/2.5			=21-X60.1	2		H07V-K/BU/2.5		+21.1	=21	=21-Y1.1	X1:1	3ABDC080069-BU1/01	
				H07V-K/BU/2.5			=21-X60.1	2		H07V-K/BU/2.5		+21.1	=21	=21-K12.1	A2	3ABDC080069-BU1/01	
+21.1	=21	=21-F60.1	2	H07V-K/BK/2.5			=21-X60.1	4		H07V-K/BK/2.5		+21.1	=21	=21-Y1.1	X1:3	3ABDC080069-BU1/01	
+21.1	=21	=21-Y1.1	X1:5	H07V-K/BK/2.5			=21-X60.1	5		/							
+21.1	=21	=21-Y1.1	X1:6	H07V-K/BK/2.5			=21-X60.1	5		H07V-K/BK/2.5		+21.1	=21	=21-K12.1	A1	3ABDC080069-BU1/01	
+21.1	=21	=21-X60.2	8/4	H07V-K/BK/1.5			=21-X60.1	7		H07V-K/BK/1.5		+21.1	=21	=21-K12.1	11		
+21.1	=21	=21-X60.3	7/4	H07V-K/BK/1.5			=21-X60.1	8		H07V-K/BK/1.5		+21.1	=21	=21-X40	2/3		
+21.1	=21	=21-X60.1	PE2/1	H07V-K/GNYE/4.0			=21-X60.1	PE1		H07V-K/GNYE/2.5		+21.1	=21	=21-Y1.1	X1:4	3ABDC080069-BU1/01	
				/			=21-X60.1	PE2		H07V-K/GNYE/4.0		+21.1	=21	=21-PE	44.1P E	3ABDC080069-BU1/01	
				/			=21-X60.1	PE2		H05V-K/BK/1.0		+21.1	=21	=21-X60.2	PE2/3	3ABDC080069-BU1/01	

Cust. Doc. No. _____
 Customer _____
 ABB Ref. No. _____

Prepared 2/3/2008
 Approved 2/3/2008
 Project _____

Guohua Hui Title
 LI Shipping

Terminal Report
 Resp. dept. _____
 Doc. No. 3ABDC080069-BU1-X

Item des. _____
 Rev. Ind. A
 Sheet _____ of _____

ABB ABB Drives

To Designation			Terminal bar			From Designation			Rev. No.								
Loc.	Fun.	Prod	Term	Cable/Wire	Core	L	Designation	Term	L	Cable/Wire	Core	Loc.	Fun.	Prod.	Term	Document ref.	Rev. No.
				/			=21-X60.1	PE2		H07V-K/GNYE/4.0		+21.1	=21	=21-X60.1	PE1/4	3ABDC080069-BU1/01	
				/		D	=21-X60.2	1		H05V-K/BK/1.0		+21.1	=21	=21-X60.1	1/3		
				H07V-K/BU/2.5		D	=21-X60.2	2		H07V-K/BU/2.5		+21.1	=21	=21-K12.2	A2	3ABDC080069-BU1/02	
+21.1	=21	=21-Y1.2	X1:2	H07V-K/BU/2.5		D	=21-X60.2	2		H07V-K/BU/2.5		+21.1	=21	=21-Y1.2	X1:1	3ABDC080069-BU1/02	
+21.1	=21	=21-F60.2	2	H07V-K/BK/2.5			=21-X60.2	4		H07V-K/BK/2.5		+21.1	=21	=21-Y1.2	X1:3		
+21.1	=21	=21-Y1.2	X1:5	H07V-K/BK/2.5			=21-X60.2	5		/						3ABDC080069-BU1/02	
+21.1	=21	=21-Y1.2	X1:6	H07V-K/BK/2.5			=21-X60.2	5		H07V-K/BK/2.5		+21.1	=21	=21-K12.2	A1	3ABDC080069-BU1/02	
+21.1	=21	=21-X60.3	8/4	H07V-K/BK/1.5			=21-X60.2	7		H07V-K/BK/1.5		+21.1	=21	=21-K12.2	11		
+21.1	=21	=21-X60.1	7/4	H07V-K/BK/1.5			=21-X60.2	8		H07V-K/BK/1.5		+21.1	=21	=21-X40	4/3		
+21.1	=21	=21-X60.2	PE2/1	H07V-K/GNYE/4.0			=21-X60.2	PE1		H07V-K/GNYE/2.5		+21.1	=21	=21-Y1.2	X1:4	3ABDC080069-BU1/02	
				/			=21-X60.2	PE2		H07V-K/GNYE/4.0		+21.1	=21	=21-X60.2	PE1/4	3ABDC080069-BU1/02	
				/			=21-X60.2	PE2		H05V-K/BK/1.0		+21.1	=21	=21-X60.1	PE2/3	3ABDC080069-BU1/02	
				/		E	=21-X60.3	1		/							
+21.1	=21	=21-Y1.3	X1:2	H07V-K/BU/2.5		E	=21-X60.3	2		H07V-K/BU/2.5		+21.1	=21	=21-Y1.3	X1:1	3ABDC080069-BU1/03	
				H07V-K/BU/2.5		E	=21-X60.3	2		H07V-K/BU/2.5		+21.1	=21	=21-K12.3	A2	3ABDC080069-BU1/03	
+21.1	=21	=21-F60.3	2	H07V-K/BK/2.5			=21-X60.3	4		H07V-K/BK/2.5		+21.1	=21	=21-Y1.3	X1:3		
+21.1	=21	=21-Y1.3	X1:5	H07V-K/BK/2.5			=21-X60.3	5		/						3ABDC080069-BU1/03	
+21.1	=21	=21-Y1.3	X1:6	H07V-K/BK/2.5			=21-X60.3	5		H07V-K/BK/2.5		+21.1	=21	=21-K12.3	A1	3ABDC080069-BU1/03	
+21.1	=21	=21-X60.1	8/4	H07V-K/BK/1.5			=21-X60.3	7		H07V-K/BK/1.5		+21.1	=21	=21-K12.3	11		
+21.1	=21	=21-X60.2	7/4	H07V-K/BK/1.5			=21-X60.3	8		H07V-K/BK/1.5		+21.1	=21	=21-X40	6/3		
+21.1	=21	=21-X60.3	PE2/1	H07V-K/GNYE/4.0			=21-X60.3	PE1		H07V-K/GNYE/2.5		+21.1	=21	=21-Y1.3	X1:4	3ABDC080069-BU1/03	
				/			=21-X60.3	PE2		H07V-K/GNYE/4.0		+21.1	=21	=21-X60.3	PE1/4	3ABDC080069-BU1/03	

Cust. Doc. No		Prepared 2/3/2008		Guohua Hui Title		Terminal Report		Item des.	
Customer		Approved 2/3/2008		LI Shipping		Resp. dept.		Rev. Ind. A	
		Project				Doc. No.		Lang Sheet of	
ABB Ref. No				ABB ABB Drives		3ABDC080069-BU1-X		2 of 2	

Based on	Prepared	Hui Guohua	Type	3ABDC080069BU01001
Resp. dept. AE	Approved	Li Shipping	Unit	Fun.=
Cust. Doc. No	ABB ABB Drive		Project	Loc.+
ABB Ref. No			Customer	Lang. EN
Item Number	Sort String	Comp. Qty	Description and Text	Technical Data
0010	-U1.1	1	3AFE59011065 BRAKING CHOPPER NBRA-669C	
0020	-U1.2	1	3AFE59011065 BRAKING CHOPPER NBRA-669C	
0030	-U1.3	1	3AFE59011065 BRAKING CHOPPER NBRA-669C	
0040	-F1.1	2	3AFE10028205 FUSE BASE 170H 3005	1400V 630A 110MM
0050	(-F1.1)	2	3AFE68327466 SCREWFUSE 170M 8635	630 A, 1000V
0060	-X25	1	3AFE68485487 TERMINAL BLOCK AS ACS800 MD	DIS. CUT. OFF POINT, -X25 (3)
0070	-F60.1	1	3AFE35077766 PROTECTION SWITCH S251S-K4	4A, 230V/400V 6KA
0080	-Y1.1	1	3AFE10032962 FAN G2E140-PI51-09	230V +/-10% 50/60HZ/180W
0090	-K12.1	1	3ABD00018091 RELAY KIT CR-M230AC3L+BASE+RC	230VAC 3CO 10A
0010		1	3ABD00018021 RELAY CR-M230AC3L	230 VAC 3 C/O
0020		1	3ABD00018026 RELAY SOCKET CR-M3SS	STANDARD SOCKET FOR 3 C/O
0030		1	3ABD00018025 RELAY RC ELEMENT CR-P/M 52C	RC ELEMENT, 110-240 VAC
0040		1	3ABD00018028 RELAY HOLDER CR-MH	HOLDER FOR CR-M SOCKET
0100	-X60.1	1	3AFE68486742 TERMINAL BLOCK AS ACS800 MD	BRA. UNIT CONTROL, X60
0110	-F1.2	2	3AFE10028205 FUSE BASE 170H 3005	1400V 630A 110MM
0120	(-F1.2)	2	3AFE68327466 SCREWFUSE 170M 8635	630 A, 1000V
0130	-F60.2	1	3AFE35077766 PROTECTION SWITCH S251S-K4	4A, 230V/400V 6KA
0140	-Y1.2	1	3AFE10032962 FAN G2E140-PI51-09	230V +/-10% 50/60HZ/180W
0150	-K12.2	1	3ABD00018091 RELAY KIT CR-M230AC3L+BASE+RC	230VAC 3CO 10A
0010		1	3ABD00018021 RELAY CR-M230AC3L	230 VAC 3 C/O
0020		1	3ABD00018026 RELAY SOCKET CR-M3SS	STANDARD SOCKET FOR 3 C/O
0030		1	3ABD00018025 RELAY RC ELEMENT CR-P/M 52C	RC ELEMENT, 110-240 VAC
0040		1	3ABD00018028 RELAY HOLDER CR-MH	HOLDER FOR CR-M SOCKET
0160	-X60.2	1	3AFE68486742 TERMINAL BLOCK AS ACS800 MD	BRA. UNIT CONTROL, X60
0170	-F1.3	2	3AFE10028205 FUSE BASE 170H 3005	1400V 630A 110MM
0180	(-F1.3)	2	3AFE68327466 SCREWFUSE 170M 8635	630 A, 1000V
0190	-F60.3	1	3AFE35077766 PROTECTION SWITCH S251S-K4	4A, 230V/400V 6KA
0200	-Y1.3	1	3AFE10032962 FAN G2E140-PI51-09	230V +/-10% 50/60HZ/180W
0210	-K12.3	1	3ABD00018091 RELAY KIT CR-M230AC3L+BASE+RC	230VAC 3CO 10A
0010		1	3ABD00018021 RELAY CR-M230AC3L	230 VAC 3 C/O
0020		1	3ABD00018026 RELAY SOCKET CR-M3SS	STANDARD SOCKET FOR 3 C/O
0030		1	3ABD00018025 RELAY RC ELEMENT CR-P/M 52C	RC ELEMENT, 110-240 VAC
0040		1	3ABD00018028 RELAY HOLDER CR-MH	HOLDER FOR CR-M SOCKET

Based on		Prepared	Hui Guohua	Type	3ABDC080069BU01001
Resp. dept.	AE	Approved	LI Shipping	Unit	Fun.=
Cust. Doc. No			ABB ABB Drive	Project	Loc.+
ABB Ref. No			Component number	Customer	Lang. EN
Item Number	Sort String	Comp. Qty		Description and Text	Technical Data
0220	-X60.3	1	3AFE68486742	TERMINAL BLOCK AS ACS800 MD	BRA. UNIT CONTROL, X60
0230		3	3AFE64060996	WIRE KIT	
0240	-X40	1	3AFE68486785	TERMINAL BLOCK DISTRIBUTION 24V	0

Doc. Identity	Rev	Lg	Kind	Reference Des.	Type	Title	Customer's Doc. Identity	File	Rev.
3ABDC080069-DSU2/1	A		EFS2	=02, +02.2	Product circuit diagram	ACS800-307 Supply unit 792-3629kVA (380-690) 2xD4-4xD4 6-pulse ACB		=02-1	
3ABDC080069-DSU2/4	A		EFS2	=02, +02.1	Product circuit diagram	ACS800-307 Supply unit 341-4537kVA (525-690V) 1xD3 - 5xD4		=02-4	
3ABDC080069-DSU2/7	A		EFS2	=02, +02.3	Product circuit diagram	ACS800-307 Supply unit 1578-2722 kVA (380-690V) 3xD4 6-pulse ACB		=02-7	
3ABDC080069-DSU2/10	A		EFS2	=02, +02.1	Product circuit diagram	ACS800-307 Supply unit ACS800-307-2720-7 FAN VOLTAGE DISTRIBUTION		=02-10	
3ABDC080069-DSU2/11	A		EFS2	=02, +02.1	Product circuit diagram	ACS800-307 Supply unit 198-4537kVA (380-690V) 1xD3-5xD4		=02-11	
3ABDC080069-DSU2/13	A		EFS2	=02, +02.1	Product circuit diagram	ACS800-307 Supply unit ACS800-307-1810-7 MAIN BREAKER CONTROL		=02-13	
3ABDC080069-DSU2/15	A		EFS2	=02, +02.1	Product circuit diagram	ACS800-307 Supply unit 792-4537kVA (380-690V) 2xD4-5xD4 no contactors		=02-15	

Based on
Replaces
Replaced by
Standard

Prepared 2/3/2008
Approved 2/3/2008

Guohua Hui
Li Shipping

Lang. Sheet of

Type code 3ABDC080069-DSU2-D



ABB ABB Drives

Doc. Identity	Rev	Lg	Kind	Reference Des.	Type	Title	Customer's Doc. Identity	File	Rev.
3ABDC080069-DSU2/16	A		EFS2	=02, +02.1	Product circuit diagram	ACS800-307 Supply unit 198-4537kVA (380-690V) 1xD3-5xD4 ACB		=02-16	

Based on
Replaces
Replaced by
Standard

Prepared 2/3/2008
Approved 2/3/2008

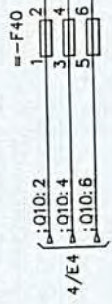
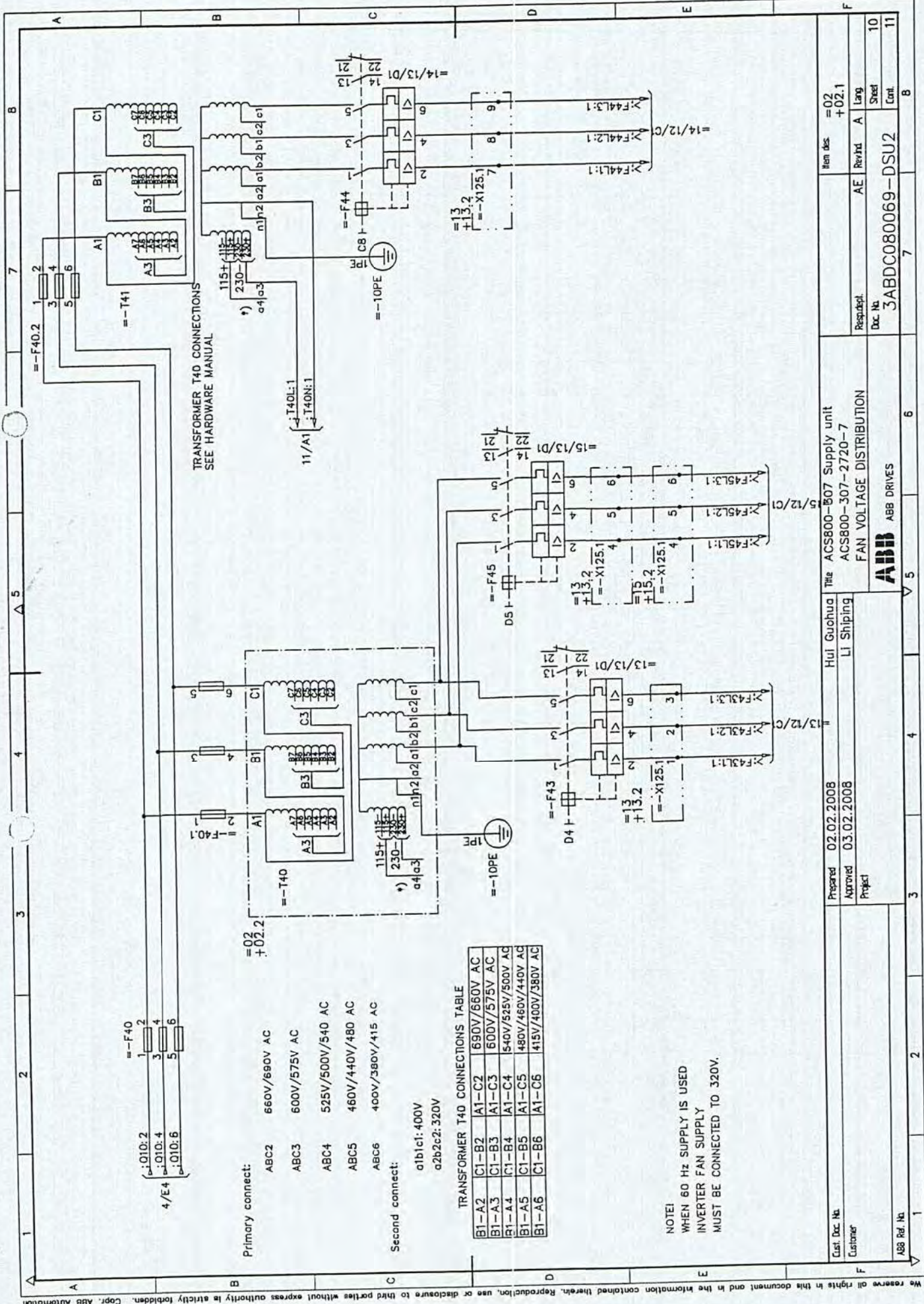
Guohua Hui
Li Shiping

Type code
3ABDC080069-DSU2-D

ABB ABB Drives

Lang.
Sheet
of

2
2



- Primary connect:
- ABC2 660V/690V AC
 - ABC3 600V/575V AC
 - ABC4 525V/500V/540 AC
 - ABC5 460V/440V/480 AC
 - ABC6 400V/380V/415 AC
- Second connect:
- a1b1c1: 400V
 - a2b2c2: 320V

TRANSFORMER T40 CONNECTIONS TABLE

B1-A2	C1-B2	A1-C2	690V/660V AC
B1-A3	C1-B3	A1-C3	600V/575V AC
B1-A4	C1-B4	A1-C4	540V/525V/500V AC
B1-A5	C1-B5	A1-C5	480V/460V/440V AC
B1-A6	C1-B6	A1-C6	415V/400V/380V AC

NOTE!
WHEN 60 HZ SUPPLY IS USED
INVERTER FAN SUPPLY
MUST BE CONNECTED TO 320V.

TRANSFORMER T40 CONNECTIONS
SEE HARDWARE MANUAL

Prepared	02.02.2008	Hui Guohua	The ACS800-807 Supply unit	Item des	=02
Approved	03.02.2008	Li Shipping	ACS800-307-2720-7	+02.1	
Project			FAN VOLTAGE DISTRIBUTION	Responsible	AE Revtd A Lng
Customer				Doc. No.	3ABDC080069-DSU2
ABB Ref. No.				Sheet	10
				Cont.	11

To Designation				Terminal bar				From Designation				Rev. No.					
Loc.	Fun.	Prod	Term	Cable/Wire	Core	L	Designation	Term	L	Cable/Wire	Core	Loc.	Fun.	Prod.	Term	Document ref.	Rev. No.
				/		A	=02-X12	1	H05V-K/BK/1.0		+02.1	=02	=02-X12	19/3	3ABDC080069-DSU2/16		
				/		A	=02-X12	2	/								
				/		C	=02-X12	3	/								
				/		C	=02-X12	4	H05V-K/BK/1.0		+02.1	=02	=02-K13	12			
				/			=02-X12	5	H05V-K/BK/1.0		+02.1	=02	=02-A10.X5	1/2	3ABDC080069-DSU2/16		
				/			=02-X12	6	H05V-K/BK/1.0		+02.1	=02	=02-A10.X5	3/2	3ABDC080069-DSU2/16		
				/			=02-X12	7	H05V-K/BK/1.0		+02.1	=02	=02-A10.X5	5/2	3ABDC080069-DSU2/16		
				/			=02-X12	8	H05V-K/BK/1.0		+02.1	=02	=02-K13	11	3ABDC080069-DSU2/16		
				/			=02-X12	11	H05V-K/BK/1.0		+02.1	=02	=02-X12	11/2	3ABDC080069-DSU2/16		
+02.1	=02	=02-X12	11/1	H05V-K/BK/1.0			=02-X12	11	/								
+02.1	=02	=02-A10.X6	4/2	H05V-K/BK/1.0			=02-X12	12	H05V-K/BK/1.0		+02.1	=02	=02-A10.X6	5/2	3ABDC080069-DSU2/16		
+02.1	=02	=02-K41	A1	H05V-K/BK/1.0			=02-X12	13	H05V-K/BK/1.0		+02.1	=02	=02-A10.X7	4/2	3ABDC080069-DSU2/16		
				/			=02-X12	14	H05V-K/BK/1.0		+02.1	=02	=02-A10.X7	5/2	3ABDC080069-DSU2/16		
				/			=02-X12	15	H05V-K/RD/1.0			=02	=02-A10.X10	3/1	3ABDC080069-DSU2/15		
				/			=02-X12	16	H05V-K/RD/1.0		+02.1	=02	=02-Q10	34	3ABDC080069-DSU2/15		
				/			=02-X12	17	/								
				/			=02-X12	18	/								
				/			=02-X12	19	H05V-K/BK/1.0		+02.1	=02	=02-X12	1/1			
+02.1	=02	=02-Q10	13	H05V-K/BK/1.0			=02-X12	19	/								
+02.1	=02	-X1	22/2	H05V-K/BK/1.0			=02-X40	1	/				=02:L			3ABDC080069-DSU2/11	
				/			=02-X40	2	/				=02:N			3ABDC080069-DSU2/11	

Cust. Doc. No.	Prepared	2/3/2008	Guohua Hui	Terminal Report	Item des.
Customer	Approved	2/3/2008	Li Shipping	Resp. dept	Rev. Ind. A
ABB Ref. No.	Project			Doc. No.	3ABDC080069-DSU2-X
			ABB ABB Drives		Sheet of

Based on	Prepared	Hui Guohua	Type	3ABDC080069SU03002
Resp. dept.	Approved	Li Shipping	Unit	Fun.=
Cust. Doc. No	Project			
ABB Ref. No	Customer			
Item Number	Sort String	Component number	Description and Text	Technical Data
0010		3ABD00006287	FUSE HANDLE	XK06-101-2522
0020		3AFE68476569	BRACKET	ACS800-07
0030		3ABD00007651	DOCUMENT POCKET	FOR CABINET
0040		3AFE64636910	RAMP FOR MODULES	RAMP
0050		3AFE64745603	AIR GUIDE	CC-AM
0060		3AFE68395721	COVER PLATE	FOR DSU
0070	-P2	3ABD00020785	A-METER	CP-T 72 3000/1A
0080	-A10	3AFE68300746	CONTROL BOARD	DSSB-01C
0090	-F7	3AFE68391407	HRC FUSE LINK	170M4823
0100	(-F7)	3AFE68449545	FUSE BASE	170H 1007
0110	(-F7)	3AFE68804299	SHROUD	FOR FUSE HOLDER
0120	(-F7)	3AFE64575945	SUPPORT INSULATOR	1KV D30 H30 M8
0130	-Q10	3AFE64745123	FUSE SWITCH	OS160D03W
0140	(-Q10)	3AFE64078488	AUXILIARY CONTACT	0A1G 10
0150	(-Q10)	3AFE64278797	AUXILIARY CONTACT	0A3G 01
0160	(-Q10)	3ABD00004160	EXTENSION SHAFT	6*6*620MM
0170	(-Q10)	3ABD00018099	TERMINAL COVERING	OSS 160TTL
0180	(-Q10)	3ABD00017822	FUSE	50NH00G-690
0190	-F9	3AFE35077782	PROTECTION SWITCH	S251S-K10
0200	(-F9)	3ABD00012170	AUXILIARY CONTACT	S250-H11
0210	-F12	3AFE35077774	PROTECTION SWITCH	S251S-K6
0220	(-F12)	3ABD00012170	AUXILIARY CONTACT	S250-H11
0230	-A11	3AFE68604338	DIODE	DSEI 2X30-04C
0240	-G11	3ABD00010604	POWER SUPPLY	DR-75-24
0250	-G12	3ABD00010604	POWER SUPPLY	DR-75-24
0260	-F111	3AFE64674978	FUSE HOLDER	CHM1D
0270	-F111	3AFE68604397	CARTRIDGE FUSE	A070GRB04T13
0280	-T40	3AFE64692968	TREFOTEK TRANSFOR	M3V6/4-81
0290	-T41	3AFE64692968	TREFOTEK TRANSFOR	M3V6/4-81
0300	-F40.1	3ABD00022173	ELECTRICAL KIT	U00-3IG/H+COVER
0010		3ABD00013924	FUSE HOLDER	U00-3IG/H
0020		3ABD00021545	COVER PLATE	U00-3IG/H
0030	(-F40.1)	3ABD00017819	FUSE	25NH00G-690

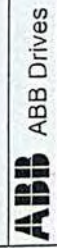
Based on	Prepared	Hui Guohua	Type	3ABDC080069SU03002
Resp. dept.	Approved	Li Shipping	Unit	Fun.=
Cust. Doc. No	AE	ABB	Project	Loc.+
ABB Ref. No	Sort String	Component number	Customer	Lang. EN
Item Number	Comp. Qty	Description and Text	Technical Data	
0320	1	3ABD00022173	ELECTRICAL KIT U00-3IG/H+COVER	
0010	1	3ABD00013924	FUSE HOLDER U00-3IG/H	FOR FUSE BASE
0020	1	3ABD00021545	COVER PLATE U00-3IG/H	25A 690V
0330	3	3ABD00017819	FUSE 25NH00G-690	
0340	1	3ABD00022173	ELECTRICAL KIT U00-3IG/H+COVER	
0010	1	3ABD00013924	FUSE HOLDER U00-3IG/H	FOR FUSE BASE
0020	1	3ABD00021545	COVER PLATE U00-3IG/H	40A 690V
0350	3	3ABD00017821	FUSE 40NH00G-690	4-6. 3A, 690V, 1NO+1NC
0360	1	3AFE64190989	MOTOR STARTER MS325-6.3+HK11	4.0-6. 3A 690V
0010	1	3AFE10017475	PROTECTION SWITCH MS325-6.3+HK11	4.0-6. 3A 690V
0010	1	3AFE10021855	PROTECTION SWITCH MS325-6.3	AUXILIARY CONTACT
0020	1	3AFE10032504	AUXILIARY CONTACT HK 11	4-6. 3A, 690V, 1NO+1NC
0370	1	3AFE64190989	MOTOR STARTER MS325-6.3+HK11	4.0-6. 3A 690V
0010	1	3AFE10017475	PROTECTION SWITCH MS325-6.3+HK11	4.0-6. 3A 690V
0010	1	3AFE10021855	PROTECTION SWITCH MS325-6.3	AUXILIARY CONTACT
0020	1	3AFE10032504	AUXILIARY CONTACT HK 11	4-6. 3A, 690V, 1NO+1NC
0380	1	3AFE64190989	MOTOR STARTER MS325-6.3+HK11	4.0-6. 3A 690V
0010	1	3AFE10017475	PROTECTION SWITCH MS325-6.3+HK11	4.0-6. 3A 690V
0010	1	3AFE10021855	PROTECTION SWITCH MS325-6.3	AUXILIARY CONTACT
0020	1	3AFE10032504	AUXILIARY CONTACT HK 11	0-1->2 (START), 20A
0390	1	3ABD00015380	CAM SWITCH K2B-003TLH	220-230VAC/50HZ
0400	1	3AFE59019082	CONTACTOR RELAY N31E-80	230VAC 3C0 10A
0410	1	3AFE64122428	R/C-CIRCUIT RC5-1/250	230 VAC 3 C/O
0420	1	3ABD00018091	RELAY KIT CR-M230AC3L+BASE+RC	STANDARD SOCKET FOR 3 C/O
0010	1	3ABD00018021	RELAY CR-M230AC3L	RC ELEMENT, 110-240 VAC
0020	1	3ABD00018026	RELAY SOCKET CR-M3SS	HOLDER FOR CR-M SOCKET
0030	1	3ABD00018025	RELAY RC ELEMENT CR-P/M 52C	230VAC 3C0 10A
0040	1	3ABD00018028	RELAY HOLDER CR-MH	230 VAC 3 C/O
0430	1	3ABD00018091	RELAY KIT CR-M230AC3L+BASE+RC	STANDARD SOCKET FOR 3 C/O
0010	1	3ABD00018021	RELAY CR-M230AC3L	RC ELEMENT, 110-240 VAC
0020	1	3ABD00018026	RELAY SOCKET CR-M3SS	HOLDER FOR CR-M SOCKET
0030	1	3ABD00018025	RELAY RC ELEMENT CR-P/M 52C	230 VAC 3 C/O
0040	1	3ABD00018028	RELAY HOLDER CR-MH	STANDARD SOCKET FOR 3 C/O
0020	1	3ABD00018026	RELAY SOCKET CR-M3SS	RC ELEMENT, 110-240 VAC
0030	1	3ABD00018025	RELAY RC ELEMENT CR-P/M 52C	HOLDER FOR CR-M SOCKET
0040	1	3ABD00018028	RELAY HOLDER CR-MH	230VAC 3C0 10A

Based on	Prepared	Hui Guohua	Type	3ABDC080069SU03002
Resp. dept.	Approved	LI Shipping	Unit	Fun.=
Cust. Doc. No	ABB Drive		Project	Loc.+
ABB Ref. No	Component number		Customer	Lang. EN
Item Number	Sort String	Comp. Qty	Description and Text	Technical Data
0440	-K14	1	RELAY KIT CR-M230AC3L+BASE+RC	230VAC 3C0 10A
0450		1	RELAY CR-M230AC3L	230 VAC 3 C/O
0020		1	RELAY SOCKET CR-M3SS	STANDARD SOCKET FOR 3 C/O
0030		1	RELAY RC ELEMENT CR-P/M 52C	RC ELEMENT, 110-240 VAC
0040		1	RELAY HOLDER CR-MH	HOLDER FOR CR-M SOCKET
0450	-S21	1	PUSH BUTTON B COLOUR WITHOUT LAMP	FOR REPLACE 3AFE64749803
0010		1	PUSH BUTTON M PI-11L/BLUE ILLUMINA	BLUE
0020		1	PLASTIC HOUSING M CBH-00	HOLDER
0030		1	LAMP INDICATOR M LB-1	2W 230VAC/DC
0460	(-S21)	1	AUXILIARY CONTACT M CB-10	I NO
0470	(-S21)	1	BULB MA5-1020	24V
0480	-X1	1	TERMINAL BLOCK ACS800 MD	1-50, 61-66, 71-73, PE
0490	-X12	1	TERMINAL BLOCK ACS800MD	SUPPLY I/O
0500	-S5	1	CAM SWITCH K1D-024MLHC	0-L1L2-L2L3-L1L3, I2A
0510	-F5	1	PROTECTION SWITCH MS325-1.6	SETTING RANGE 1-1.6A
0520	(-F5)	1	AUXILIARY CONTACT HK 11	AUXILIARY CONTACT
0530	-P5	1	V-METER CP-T 72 750V	750VAC
0540	-Q1	1	CIRCUIT BREAKER E3S2500/AC230V	3P WMP PR121-LI2500
0550	(-Q1)	1	BREAKER ACCESSORI E3 W FP 3P HR	FOR SACE E3
0560	(-T2)	1	CURR. TRANSFORMER HF6 3000/1A 741F0039	3000/1A 60VA/LK1
0570	(-F1.1)	1	INSULATE PLATE CC-AM	
0580	(-F1.2)	1	SCREW FUSE 170M4417	
0590	(-F1.3)	1	SCREW FUSE 170M4417	
0600	(-F1.4)	1	SCREW FUSE 170M4417	
0610	(-F1.5)	1	SCREW FUSE 170M4417	
0620	(-F1.6)	1	SCREW FUSE 170M4417	
0630	(-F2.1)	1	SCREW FUSE 170M4417	
0640	(-F2.2)	1	SCREW FUSE 170M4417	
0650	(-F2.3)	1	SCREW FUSE 170M4417	
0660	(-F2.4)	1	SCREW FUSE 170M4417	
0670	(-F2.5)	1	SCREW FUSE 170M4417	
0680	(-F2.6)	1	SCREW FUSE 170M4417	
0690		1	SCREW FUSE 170M4417	

Based on	Prepared	Hui Guohua	Type	3ABDC080069SU03002
Resp. dept.	Approved	LI Shipping	Unit	Fun.=
Cust. Doc. No	Project			
ABB Ref. No	Customer			
Item Number	Sort String	Component number	Description and Text	Lang. EN
				Technical Data
0700	-F3.1	3AFE64607383	SCREW FUSE	170M4417
0710	-F3.2	3AFE64607383	SCREW FUSE	170M4417
0720	-F3.3	3AFE64607383	SCREW FUSE	170M4417
0730	-F3.4	3AFE64607383	SCREW FUSE	170M4417
0740	-F3.5	3AFE64607383	SCREW FUSE	170M4417
0750	-F3.6	3AFE64607383	SCREW FUSE	170M4417
0760	-U1.1	3AFE68485703	DIODE SUPPLY UNIT ACS800-704-0910-7+0F25	D4 / 908KVA
0770	-U1.2	3AFE68485703	DIODE SUPPLY UNIT ACS800-704-0910-7+0F25	D4 / 908KVA
0780	-U1.3	3AFE68485703	DIODE SUPPLY UNIT ACS800-704-0910-7+0F25	D4 / 908KVA
0790	-X01.1-3	3AFE64753673	CONNECT. PLUG KI X01.1-3	3XD4, TOP ENTRY
0800	-Q20	3AFE59022890	DISCONNECTOR	OT 25E3
0810	(-Q20)	3AFE59022911	AUXILIARY CONTACT OA 2G11	1NO+1NC, 230V 6A AC15
0820	-F31	3AFE35077782	PROTECTION SWITCH S251S-K10	10A, 230V/400V 6KA
0830	(-F31)	3ABD00012170	AUXILIARY CONTACT S250-H11	GH S250 1916 R0011
0840	-X40	3ABD00017720	TERMINAL BLOCK	X40
0850	(-L1-L2)	3ABD00013576	BULB	MA5-1230
0860	-L2	3ABD00017396	LAMP INDICATOR	CL-100R
0870	-L1	3ABD00017397	LAMP INDICATOR	CL-100G

Doc. Identity	Rev	Lg	Kind	Reference Des.	Type	Title	Customer's Doc. Identity	File	Rev.
3ABDC080069-DWB/1	A		EFS2	=13, +13.1	Product circuit diagram	ACS800-107 Drive Unit Charging circuit Charging fuse switch 2xR8i	=13-1		
3ABDC080069-DWB/2	A		EFS2	=13, +13.1	Product circuit diagram	ACS800-107 Drive Unit 2xR8i Switch fuse Common motor terminals	=13-2		
3ABDC080069-DWB/10	A		EFS2	=13, +13.2	Product circuit diagram	ACS800-107 Drive Unit R8i-6xR8i, UPS Switch fuse	=13-10		
3ABDC080069-DWB/12	A		EFS2	=13, +13	Product circuit diagram	ACS800-107 Drive Unit 2xR8i Fan unit	=13-12		
3ABDC080069-DWB/13	A		EFS2	=13, +13.2	Product circuit diagram	ACS800-107 Drive Unit R8i-3xR8i Fan control relays	=13-13		
3ABDC080069-DWB/17	A		EFS2	=13, +13.2	Product circuit diagram	ACS800-107 Drive Unit 2-12xR8i RMIO-02 CDP+NLMD+RDCO-0X+RAPI	=13-17		
3ABDC080069-DWB/18	A		EFS2	=13, +13.2	Product circuit diagram	ACS800-107 Drive Unit R8i-1-3xR8i -X2 OESA	=13-18		

Based on	Guohua Hui
Replaces	LI Shipping
Replaced by	
Standard	
Prepared	2/3/2008
Approved	2/3/2008
Type code	3ABDC080069-DWB-D
Rev. Ind.	
Lang.	
Sheet	1
of	2



Doc. Identity	Rev	Lg	Kind	Reference Des.	Type	Title	Customer's Doc. Identity	File	Rev.
3ABDC080069-DWB/19	A		EFS2	=13, +13.2	Product circuit diagram	ACS800-107 Drive Unit PPCS Branching unit APBU-44, -A415, 4 units	=13-19		
3ABDC080069-DWB/20	A		EFS2	=13, +12.2	Product circuit diagram	ACS800-107 Drive Unit Profibus Adapter RPBA-01, Option 1	=13-20		
3ABDC080069-DWB/21	A		EFS2	=13, +13.2	Product circuit diagram	ACS800-107 Drive Unit Pulse Encoder Interface RTAC-01, Option 2	=13-21		

Based on
Replaces
Replaced by
Standard

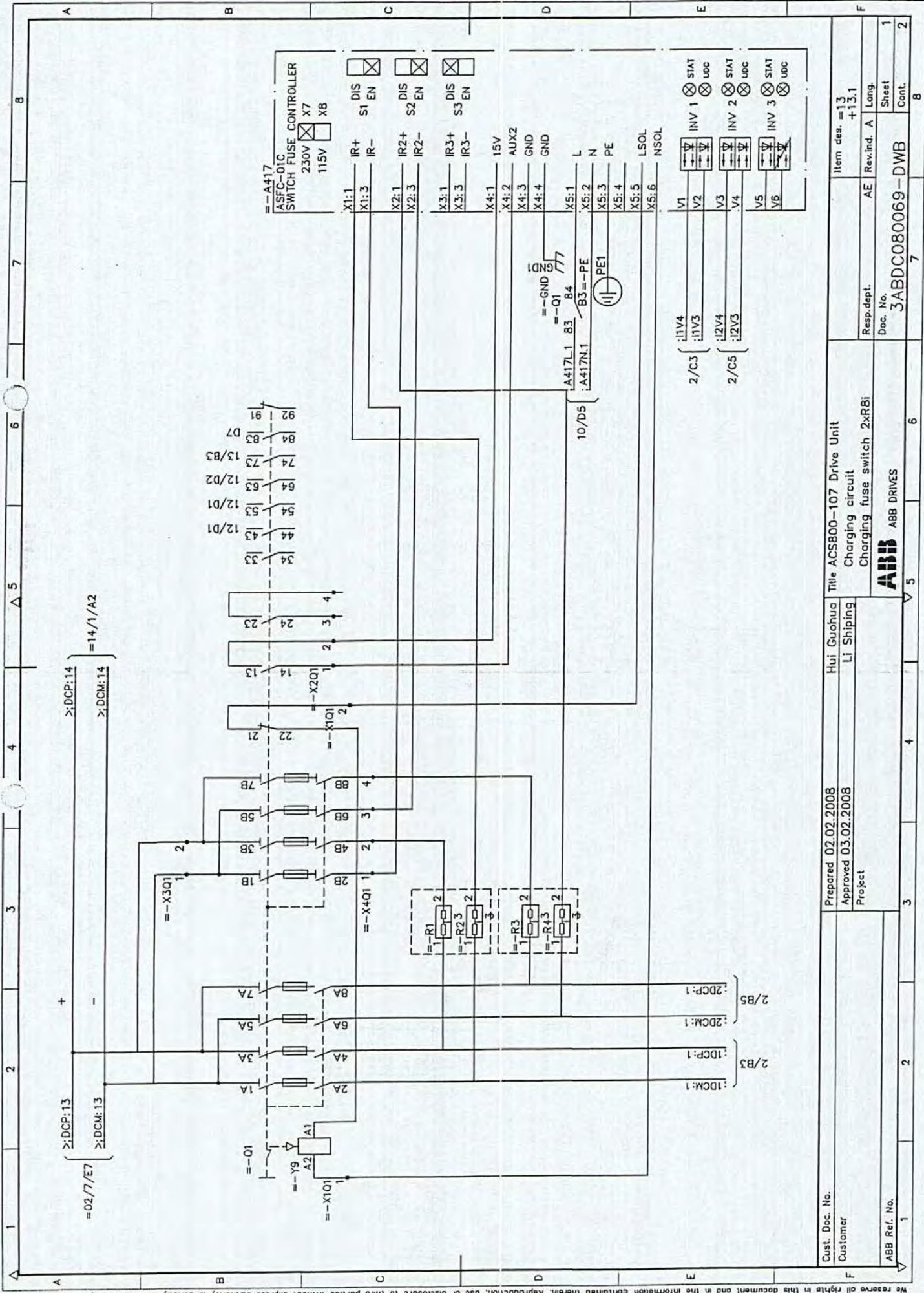
Prepared 2/3/2008
Approved 2/3/2008

Guohua Hui
Li Shipping

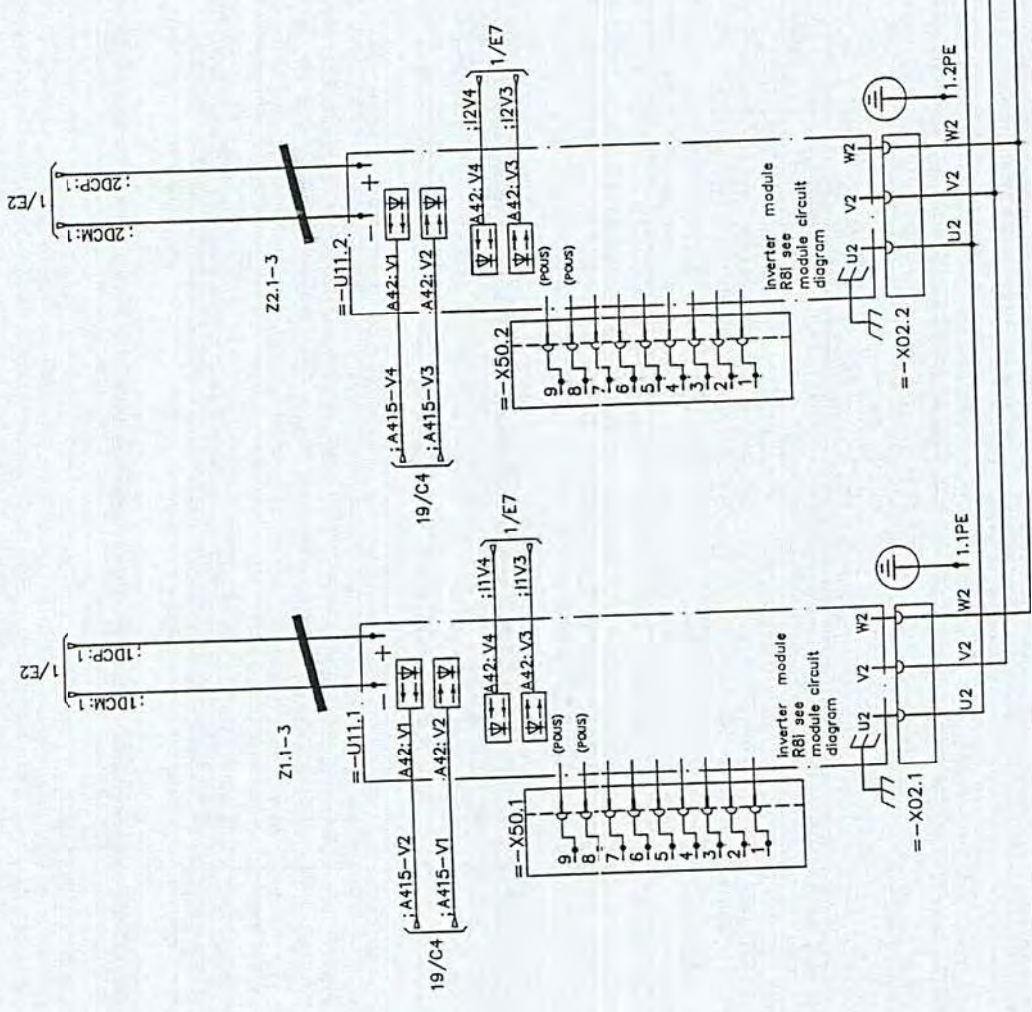
Type code 3ABDC080069-DWB-D
Rev. Ind. Rev. Ind.
Lang. Sheet of
2 2



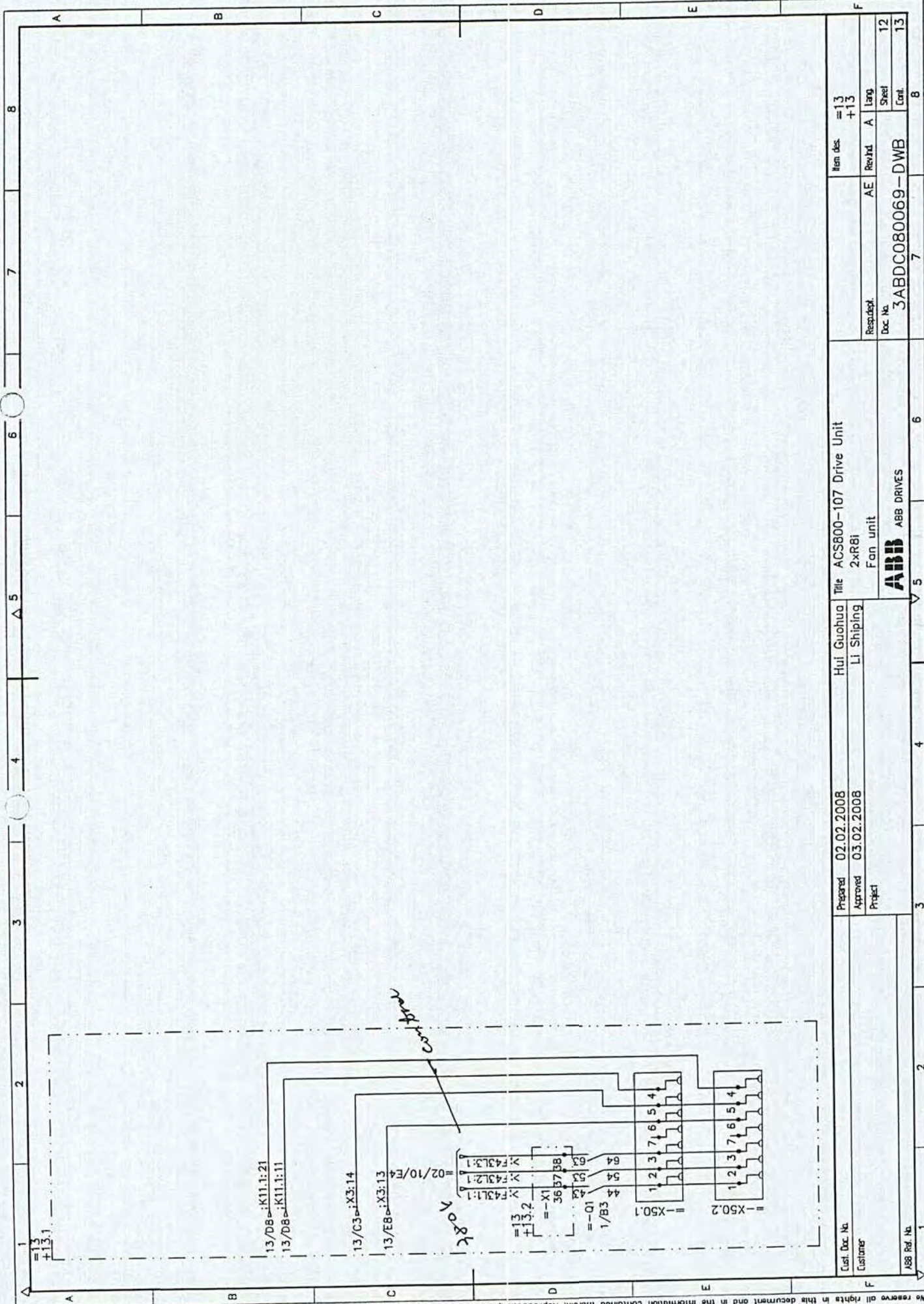
ABB ABB Drives



Cust. Doc. No.	Prepared 02.02.2008	Hui Guohua	Title ACS800-107 Drive Unit	Item des.=13
Customer	Approved 03.02.2008	Li Shipping	Charging circuit	+13.1
ABB Ref. No.	Project		Charging fuse switch 2xR8I	AE Rev.ind. A
			ABB ABB DRIVES	Doc. No.
				3ABDC080069-DWB
				Long.
				Sheet
				Cont.



1	2	3	4	5	6	7	8
Customer	Customer	Project	Project	Project	Project	Project	Project
Prepared	02.02.2008	Hui Guohua	ACS800-107 Drive Unit	Responsible	AE	Rev/rd	A
Approved	03.02.2008	LI Shipping	2xR8i Switch fuse	Doc. No.	3ABDC080069-DWB		
Title			Common motor terminals	Item No.	=13		
Customer			ABB DRIVES	Lang	+13.1		
Customer			ABB DRIVES	Sheet	2		
Customer			ABB DRIVES	Cont.	10		



Prepared	02.02.2008	Hui Guohua	Title	ACS800-107 Drive Unit	Rev'd	AE	Men des	=13 +13
Approved	03.02.2008	Li Shipping	2xR81	Fan unit	Doc No.	3ABDC080069-DWB	Rev'd	A
Project			ABB	ABB DRIVES	Sheet	12	Larg	
					Cont.	13		