

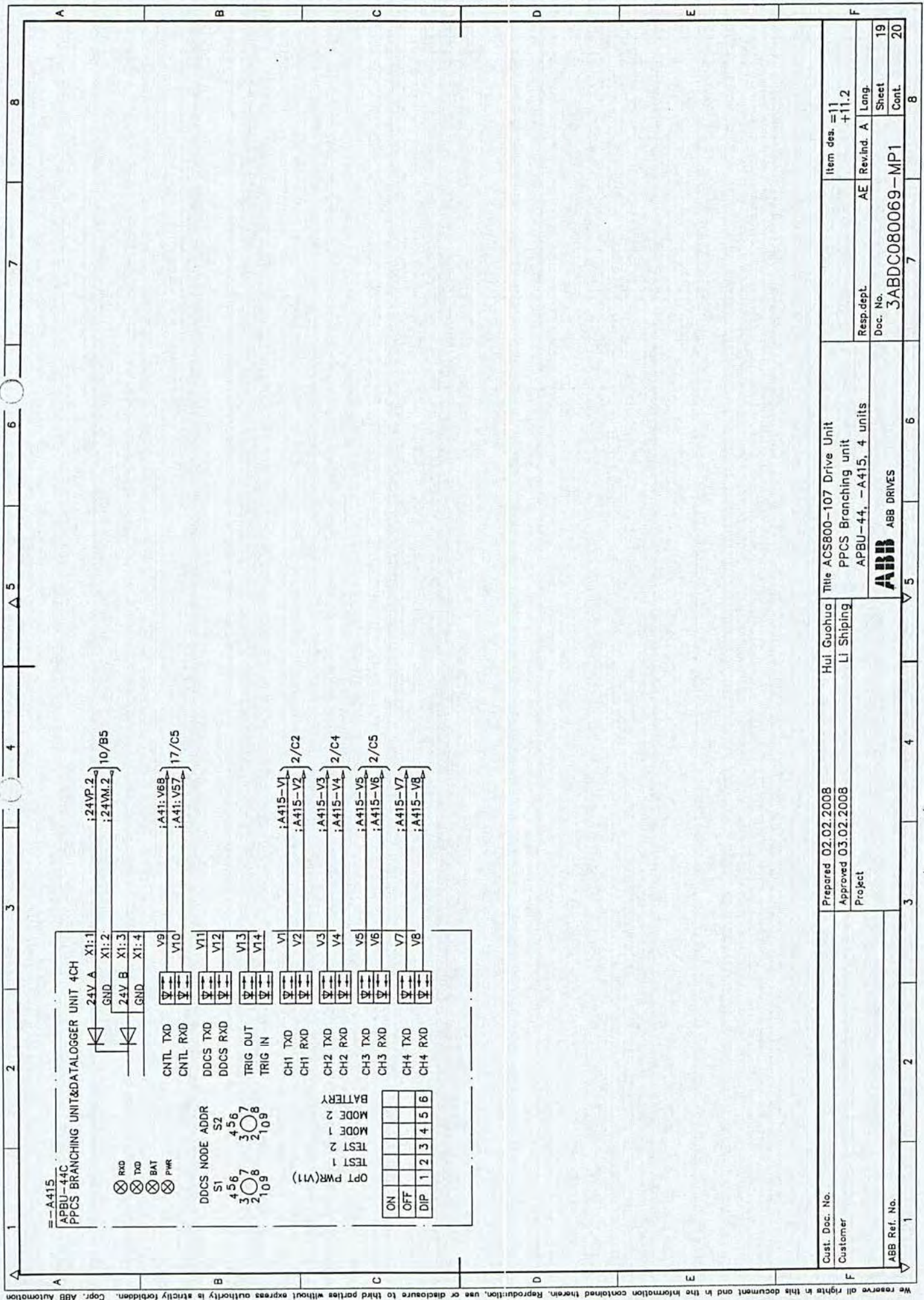
Continuing on sheet 18

1	2	3	4	5	6	7	8
1	2	3	4	5	6	7	8
Customer		Hui Guohua		Title ACS800-107 Drive Unit		Rev'd = 11	
Customer		Li Shipping		2-12xR81 RMIO-02		+11.2	
Customer		Project		CDP+NLM+RDCC-OX+RAPI		AE Rev'd A	
Customer		Project		ABB ABB DRIVES		Lang	
Customer		Project		Doc. No. 3ABDC080069-MP1		Sheet 17	
Customer		Project		Doc. No. 3ABDC080069-MP1		Cont. 18	









We reserve all rights in this document and in the information contained therein. Reproduction, use or disclosure to third parties without express authority is strictly forbidden. Copr. ABB Automation

Cust. Doc. No.	Prepared 02.02.2008	Hul Guchua	Title ACS800-107 Drive Unit	Item des. = 11
Customer	Approved 03.02.2008	Li Shipping	PPCS Branching unit	+11.2
ABB Ref. No.	Project		APBU-44, -A415, 4 units	Rev. Ind. A Lang.
			<b>ABB</b> ABB DRIVES	Resp. dept. AE
				Doc. No. 3ABDC080069-MP1
				Sheet 19
				Cont. 20







To Designation			Terminal bar			From Designation			Rev.							
Loc.	Fun.	Prod.	Term	Cable/Wire	Core	L	Designation	Term	L	Core	Loc.	Fun.	Prod.	Term	Document ref.	Rev. No.
+11.2	=11	=11-X25	204/3	H05V-K/BU/1.0		B	=11-X1	1	A						3ABDC080069-MP1/10	
				/				2	A						3ABDC080069-MP1/10	
+11.2	=11	=11-X1	30/3	H05V-K/BU/1.0		B	=11-X1	3			+11.2	=11	=11-G10	N		
				/		C	=11-X1	11			+11.2	=11	=11-F11	2	3ABDC080069-MP1/10	
				/		C	=11-X1	11			+11.2	=11	=11-G10	L	3ABDC080069-MP1/10	
				/		C	=11-X1	12	D						3ABDC080069-MP1/10	
				/		E	=11-X1	13	D						3ABDC080069-MP1/10	
				/		E	=11-X1	14								
+11.2	=11	=11-F12	1	H07V-K/BK/6.0			=11-X1	15			+11.2	=11	=11-X25	214/3		
+11.2	=11	=11-F11	1	H07V-K/BK/6.0			=11-X1	15								
+01.1	=01	=01-F41	13	H05V-K/BK/1.0			=11-X1	27			+11.2	=11	=11-K11.1	14	3ABDC080069-MP1/13	
				H05V-K/BK/1.0			=11-X1	27			+11.2	=11	=11-F12	2	3ABDC080069-MP1/13	
+11.2	=11	=11-X109	1/2	H05V-K/BK/1.0			=11-X1	28			+11.1	=11	=11-Q1	73	3ABDC080069-MP1/13	
+11.1	=11	=11-X50.1	5/2	H05V-K/BK/1.0			=11-X1	29			+11.1	=11	=11-Q1	74		
+11.2	=11	=11-K10.1	A1	H05V-K/BK/1.0			=11-X1	29								
+11.2	=11	=11-K11.1	A2	H05V-K/BU/1.0			=11-X1	30			+11.1	=11	=11-X50.1	6/2	3ABDC080069-MP1/13	
+11.2	=11	=11-K10.1	A2	H05V-K/BU/1.0			=11-X1	30			+11.2	=11	=11-X1	3/4	3ABDC080069-MP1/13	
+11.2	=11	=11-K11.1	31	H05V-K/BK/1.0			=11-X1	33			+11.1	=11	=11-X50.3	4/2	3ABDC080069-MP1/13	
+11.2	=11	=11-X125.1	1/1	H05V-K/BK/1.0			=11-X1	36			+11.1	=11	=11-Q1	43	3ABDC080069-MP1/12	
+11.2	=11	=11-X125.1	2/1	H05V-K/BK/1.0			=11-X1	37			+11.1	=11	=11-Q1	53	3ABDC080069-MP1/12	
+11.2	=11	=11-X125.1	3/1	H05V-K/BK/1.0			=11-X1	38			+11.1	=11	=11-Q1	63	3ABDC080069-MP1/12	
				/			=11-X1	PE1			+11.2	=11	=11-10PE	1PE	3ABDC080069-MP1/10	
+11.2	=11	=11-G10		H05V-K/GNVE/1.0			=11-X1	PE2			+11.2	=11	=11-G10	PE		

Cust. Doc. No.	2/3/2008	Guohua Hui Title	Terminal Report	Item des.
Customer	2/3/2008	LI Shipping	Resp. dept.	Rev. Ind. A
Project			Doc. No.	3ABDC080069-MP1-X
ABB Ref. No.				Sheet of



ABB Drives



To Designation				Terminal bar				From Designation				Re Nc					
Loc.	Fun.	Prod	Term	CableWire	Core	L	Designation	Term	L	CableWire	Core		Loc.	Fun.	Prod.	Term	Document ref.
+11.1	=11	=11-A417	X5:6	/			=11-X1	PE3		H05V-K/GN/YE/1.0		+11.2	=11	=11-Y10	PE	3ABDC080069-MP1/10	
+11.1	=11	=11-A417	X5:5	H05V-K/BK/0.75			=11-X1Q1	1		/							
+11.1	=11	=11-A417	X4:2	H05V-K/BK/0.75			=11-X1Q1	2		/							
+11.1	=11	=11-A417	X4:1	H05V-K/BK/0.75			=11-X2Q1	1		/							
				/			=11-X2Q1	2		/							
				/			=11-X2Q1	3		/							
				/			=11-X2Q1	4		/							
+11.2	=11	=11-K11.1	11	H05V-K/BK/1.0			=11-X3	31		H05V-K/BK/1.0		+11.1	=11	=11-X50.1	4/2	3ABDC080069-MP1/13	
+11.2	=11	=11-K11.1	21	H05V-K/BK/1.0			=11-X3	32		H05V-K/BK/1.0		+11.1	=11	=11-X50.2	4/2	3ABDC080069-MP1/13	
+11.1	=11	=11-Q1	1A	H3RR-K/B/2_5			=11-X3Q1	1		/							
+11.1	=11	=11-Q1	3A	H3RR-K/B/2_5			=11-X3Q1	2		/							
+11.1	=11	=11-A417	X1:3	H07V-K/BK/2.5			=11-X4Q1	1		/							
+11.1	=11	=11-R1	2	H07V-K/BK/2.5			=11-X4Q1	2		/							
+11.1	=11	=11-A417	X2:3	H07V-K/BK/2.5			=11-X4Q1	3		/							
+11.1	=11	=11-R3	2	H07V-K/BK/2.5			=11-X4Q1	4		/							
+11.1	=11	=11-A417	X3:3	H07V-K/BK/2.5			=11-X4Q1	5		/							
+11.1	=11	=11-R5	2	H07V-K/BK/2.5			=11-X4Q1	6		/							
+11.2	=11	=11-A41.X34	3/2	/			=11-X11	1	F	/		+11.2	=11	=11-G10	-	3ABDC080069-MP1/10	
				/			=11-X11	2	F	/		+11.2	=11	=11-A415	X1:2	3ABDC080069-MP1/10	
				/			=11-X11	3	G	/							
+11.2	=11	=11-A41.X34	2/2	/			=11-X11	4	H	/		+11.2	=11	=11-G10	+	3ABDC080069-MP1/10	
				/			=11-X11	5	H	/		+11.2	=11	=11-A415	X1:1	3ABDC080069-MP1/10	
				/			=11-X11	6	I	/							

Cust. Doc. No	Prepared	2/3/2008	Guohua Hui	Terminal Report	Item des.
Customer	Approved	2/3/2008	Lj Shipping	Resp. dept.	Rev. Ind.
	Project			Doc. No.	Lang
ABB Ref. No			ABB	3ABDC080069-MP1-X	A
			ABB Drives		Sheet
					of



Loc.	To Designation		Term	Cable/Wire	Core	Terminal bar		Cable/Wire	Core	Loc.	From Designation		Term	Document ref.	Rev No
	Fun.	Prod				L	Designation				L	Fun.			
				/		=11-X25	201	H05V-K/BU/1.0		+11.2	=11	=11-Y10	N	3ABDC080069-MP1/10	
				/		=11-X25	201	H07V-K/BU/1.0		+01.1	=01	=01-X1	10/2	3ABDC080069-MP1/10	
				H05V-K/BU/1.0		=11-X25	204	H05V-K/BU/1.0		+11.2	=11	=11-X1	1/2	3ABDC080069-MP1/10	
+11.2	=12	=12-X1	1/2	H05V-K/BU/1.0		=11-X25	204	H07V-K/BU/1.0		+01.1	=01	=01-X1	1/2	3ABDC080069-MP1/10	
				/		=11-X25	211	H07V-K/BK/1.0		+01.1	=01	=01-X1	19/2	3ABDC080069-MP1/10	
				/		=11-X25	211	H07V-K/BK/6.0		+11.2	=11	=11-F10	1	3ABDC080069-MP1/10	
+11.2	=12	=12-X1	15/1	H05V-K/BK/1.0		=11-X25	214	H05V-K/BK/1.0		+11.2	=11	=11-X11.2	1/2	3ABDC080069-MP1/10	
				H05V-K/BK/1.0		=11-X25	214	H05V-K/BK/1.0		+11.2	=11	=11-X1	15/3	3ABDC080069-MP1/10	
+11.1	=11	=11-Q1	44	H07V-K/BN/1.5		=11-X50.1	1	H07V-K/BN/1.5		+11.1	=11	=11-X50.2	1/2	3ABDC080069-MP1/12	
+11.1	=11	=11-Q1	54	H07V-K/BK/1.5		=11-X50.1	2	H07V-K/BK/1.5		+11.1	=11	=11-X50.2	2/2	3ABDC080069-MP1/12	
+11.1	=11	=11-Q1	64	H07V-K/WH/1.5		=11-X50.1	3	H07V-K/WH/1.5		+11.1	=11	=11-X50.2	3/2	3ABDC080069-MP1/12	
+11.2	=11	=11-X3	31/1	H05V-K/BK/1.0		=11-X50.1	4	/							
+11.2	=11	=11-X1	29/2	H05V-K/BK/1.0		=11-X50.1	5	H05V-K/BK/1.0		+11.1	=11	=11-X50.2	5/2	3ABDC080069-MP1/12	
+11.2	=11	=11-X1	30/1	H05V-K/BK/1.0		=11-X50.1	5	H05V-K/BU/1.0		+11.1	=11	=11-X50.2	6/2	3ABDC080069-MP1/12	
				/		=11-X50.1	7	/							
+11.1	=11	=11-X50.1	1/1	H07V-K/BN/1.5		=11-X50.2	1	H07V-K/BN/1.5		+11.1	=11	=11-X50.3	1/2	3ABDC080069-MP1/12	
+11.1	=11	=11-X50.1	2/1	H07V-K/BK/1.5		=11-X50.2	2	H07V-K/BK/1.5		+11.1	=11	=11-X50.3	2/2	3ABDC080069-MP1/12	
+11.1	=11	=11-X50.1	3/1	H07V-K/WH/1.5		=11-X50.2	3	H07V-K/WH/1.5		+11.1	=11	=11-X50.3	3/2	3ABDC080069-MP1/12	
+11.2	=11	=11-X3	32/1	H05V-K/BK/1.0		=11-X50.2	4	/							
+11.1	=11	=11-X50.1	5/1	H05V-K/BK/1.0		=11-X50.2	5	H05V-K/BK/1.0		+11.1	=11	=11-X50.3	5/2	3ABDC080069-MP1/12	
+11.1	=11	=11-X50.1	6/1	H05V-K/BU/1.0		=11-X50.2	6	H05V-K/BU/1.0		+11.1	=11	=11-X50.3	6/2	3ABDC080069-MP1/12	
				/		=11-X50.2	7	/							
+11.1	=11	=11-X50.2	1/1	H07V-K/BN/1.5		=11-X50.3	1	/							

Cust. Doc. No	Prepared	2/3/2008	Guohua Hui	Terminal Report	Item des.
Customer	Approved	2/3/2008	LI Shipping	Resp. dept.	Rev. ind.
	Project			Doc. No.	A
ABB Ref. No	ABB Drives			3ABDC080069-MP1-X	Sheet of



To Designation			Terminal bar			From Designation			Re No.								
Loc.	Fun.	Prod	Term	Cable/Wire	Core	L	Designation	Term		L	Cable/Wire	Core	Loc.	Fun.	Prod.	Term	Document ref.
+11.1	=11	=11-X50.2	2/1	H07V-K/BK/1.5			=11-X50.3	2	/	/							
+11.1	=11	=11-X50.2	3/1	H07V-K/WH/1.5			=11-X50.3	3	/	/							
+11.2	=11	=11-X1	33/1	H05V-K/BK/1.0			=11-X50.3	4	/	/							
+11.1	=11	=11-X50.2	5/1	H05V-K/BK/1.0			=11-X50.3	5	/	/							
+11.1	=11	=11-X50.2	6/1	H05V-K/BU/1.0			=11-X50.3	6	/	/							
+11.2	=11	=11-X1	28/2	H05V-K/BK/1.0			=11-X109	7	/	/							
+11.2	=12	=12-X1	28/2	H05V-K/BK/1.0			=11-X109	1		H05V-K/BK/1.0		+01.1	=01	=01-F41	14	3ABDC080069-MP1/13	
+11.2	=11	=11-X25	214/1	H05V-K/BK/1.0			=11-X109	2	/	/							
+11.2	=12	=12-X1	28/2	H05V-K/BK/1.0			=11-X109	3		H05V-K/BK/1.0		+01.1	=01	=01-F42	14	3ABDC080069-DWA/13	
+11.2	=11	=11-X25	214/1	H05V-K/BK/1.0			=11-X111.2	4	/	/							
+11.2	=11	=11-X25	214/1	H05V-K/BK/1.0			=11-X111.2	1		H07V-K/BK/10		+01.1	=01	=01-X1	15/2	3ABDC080069-MP1/10	
+11.2	=11	=11-X25	214/1	H05V-K/BK/1.0			=11-X111.2	2	/	/							
+11.2	=11	=11-X25	214/1	H05V-K/BK/1.0			=11-X111.2	3	/	/							
+11.2	=11	=11-X25	214/1	H05V-K/BK/1.0			=11-X111.2	4	/	/							
+21.1	=21	=21-X25	211/4	H05V-K/BK/1.0			=11-X111.2	5		H05V-K/BK/1.0		+01.1	=01	=01-X1	20/2	3ABDC080069-BU1/01	
+22.1	=22	=22-X25	211/4	H05V-K/BK/1.0			=11-X111.2	5	/	/							
+01.1	=01	=01-F41	2	H05V-K/BK/1.0			=11-X111.2	6	/	/							
+01.1	=01	=01-F41	4	H05V-K/BK/1.0			=11-X125.1	1		H05V-K/BK/1.0		+11.2	=11	=11-X1	36/2	3ABDC080069-DSU1/10	
+01.1	=01	=01-F41	6	H05V-K/BK/1.0			=11-X125.1	2		H05V-K/BK/1.0		+11.2	=11	=11-X1	37/2	3ABDC080069-DSU1/10	
+01.1	=01	=01-F42	2	H05V-K/BK/1.0			=11-X125.1	3		H05V-K/BK/1.0		+11.2	=11	=11-X1	38/2	3ABDC080069-DSU1/10	
+01.1	=01	=01-F42	4	H05V-K/BK/1.0			=11-X125.1	4		H05V-K/BK/1.0		+11.2	=12	=12-X1	36/2	3ABDC080069-DSU1/10	
+01.1	=01	=01-F42	4	H05V-K/BK/1.0			=11-X125.1	5		H05V-K/BK/1.0		+11.2	=12	=12-X1	37/2	3ABDC080069-DSU1/10	
+01.1	=01	=01-F42	6	H05V-K/BK/1.0			=11-X125.1	6		H05V-K/BK/1.0		+11.2	=12	=12-X1	38/2	3ABDC080069-DSU1/10	

Cust. Doc. No.	2/3/2008	Prepared	2/3/2008	Guohua Hui	Title
Customer	2/3/2008	Approved	2/3/2008	Li Shipping	
ABB Ref. No.		Project			
Terminal Report			Item des.		
Resp. dept			Rev. Ind. A		
Doc. No.			3ABDC080069-MP1-X		
ABB			ABB Drives		
Sheet			of		



To Designation			Terminal bar			From Designation			Rev No.						
Loc.	Fun.	Prod	Core	L	Designation	Term	L	Cable/Wire		Core	Loc.	Fun.	Prod.	Term	Document ref.
					=11-X125.1	7		/							
					=11-X125.1	8		/							
					=11-X125.1	9		/							

Cust. Doc. No	Prepared	2/3/2008	Guohua Hui	Terminal Report	Item des.
Customer	Approved	2/3/2008	LI Shipping	Resp. dept.	Rev. Ind.
	Project			Doc. No.	3ABDC080069-MP1-X
ABB Ref. No			<b>ABB</b> ABB Drives		
				Lang	A
				Sheet	
				of	



=11

Based on	Prepared	Hui Guohua	Type	3ABDC080069DU01001
Resp. dept.	Approved	Li Shipping	Unit	Fun.=
Cust. Doc. No	<b>ABB</b> ABB Drive		Project	Loc.+
ABB Ref. No	Component number		Customer	Lang. EN
Item Number	Sort String	Comp. Qty	Description and Text	Technical Data
0010	-Q1	1	FUSE SWITCH	0ESL630V32D24V2, 230V
0020	(-Q1)	6	HRC FUSE LINK	170M8650
0030	(-Q1)	6	CHARGING FUSE	170M2673
0040	-R1	1	POWER RESISTOR	ZRF 30X167.5 S 33R
0050	-R2	1	POWER RESISTOR	ZRF 30X167.5 S 33R
0060	-R3	1	POWER RESISTOR	ZRF 30X167.5 S 33R
0070	-R4	1	POWER RESISTOR	ZRF 30X167.5 S 33R
0080	-R5	1	POWER RESISTOR	ZRF 30X167.5 S 33R
0090	-R6	1	POWER RESISTOR	ZRF 30X167.5 S 33R
0100	-A417	1	CHAR. CTRL BOARD	ASFC-01C
0110	-U1.1	1	ACS800-104-0580-7+E205+V991	72 X 245
0120	-U1.2	1	ACS800-104-0580-7+E205+V991	R81, 690V 580KVA-DU/DT
0130	-U1.3	1	ACS800-104-0580-7+E205+V991	R81, 690V 580KVA-DU/DT
0140	-X02.1	1	CONNECT. PLUG KI X02.1-2	R81, 690V 580KVA-DU/DT
0150	-X02.2	1	CONNECT. PLUG KI X02.1-2	INVERTER CONNECTOR
0160	-X02.3	1	CONNECT. PLUG KI X02.1-2	INVERTER CONNECTOR
0170	-Z1.1-3	3	COMM. MODE CHOKE	INVERTER CONNECTOR
0180	-Z2.1-3	3	COMM. MODE CHOKE	500F/55UF/102X76X25
0190	-Z3.1-3	3	COMM. MODE CHOKE	500F/55UF/102X76X25
0200	-G10	1	POWER SUPPLY	500F/55UF/102X76X25
0210	-F11	1	PROTECTION SWITCH	24V 3.2A
0220	-A49	1	CONTROL PANEL	4A, 230V/400V 6KA
0230	-A48	1	FILTERING BOARD	4*20CHARS, 16 BUTTONS
0240	(-A48)	1	PANEL PLUG CONN	DIAGNOSTICS AND INTERFACE
0250	(-A48)	1	GROUNDING WIRE	PHONE CONNNECTOR L=34MM
0260	(-A48)	1	CDP PANEL	
0270	(-A48)	1	EMC SHIELD	130 X 266MM
0280	(-A48)	1	FLAT CABLE	FOR CDP PANEL
0290	-A41	1	DRIVE CTRL UNIT	3M, CROSS, RM10/GDP312R
0300	-A415	1	BRANCHING UNIT	RM10-02
0310	-A411	1	DATA INTERFACE	4CH
0320	-N	1	SOFTWARE	PROFIBUS DP ADAPTER
0330	-F12	1	PROTECTION SWITCH	SYSTEM SOFTWARE
				4A, 230V/400V 6KA



Based on	Prepared	Hui Guohua	Type	3ABDC080069DU01001
Resp. dept.	Approved	LI Shipping	Unit	Fun.=
Cust. Doc. No	Project			
ABB Ref. No	Customer			
Item Number	Sort String	Component number	Description and Text	Technical Data
0340	(-F12)	3ABD00012170	AUXILIARY CONTACT S250-H11	GH S250 1916 R0011
0350	-K10.1	3ABD00017299	TIME RELAY CT-ERS ICO	0.05S-300H
0360	-K11.1	3ABD00018091	RELAY KIT CR-M230AC3L+BASE+RC	230VAC 3CO 10A
0010		3ABD00018021	RELAY CR-M230AC3L	230 VAC 3 C/O
0020		3ABD00018026	RELAY SOCKET CR-M3SS	STANDARD SOCKET FOR 3 C/O
0030		3ABD00018025	RELAY RC ELEMENT CR-P/M 52C	RC ELEMENT, 110-240 VAC
0040		3ABD00018028	RELAY HOLDER CR-MH	HOLDER FOR CR-M SOCKET
0370	-A413	3AFE64492454	DACS COMMUN. OPTI RDCO-02C	X1 (2)
0380	-X1	3AFE68486009	TERMINAL BLOCK DRIVE CTRL N*R8, DOLFAN	X11: 1-6
0390	-X11	3AFE68351391	TERMINAL BLOCK ACS800 MD	
0400	-X25	3AFE68472601	TERMINAL BLOCK ACS800 MD	DIS. CUTOFF POINT R8, -X25(1)
0410	-F10	3AFE36653345	PROTECTION SWITCH S25IS-K2	2A, 230V/400V 6KA
0420	-Y10	3AFE10005019	FAN W2E 143-AA09-01	220V/50/60HZ/24W
0430	(-Y10)	3AFE64082981	FINGER GUARD LZ36	150.5*162.67114LHR
0440	-X125.1	3AFE64674081	CONNECTOR STV S 9 SB	FOR AUX. VOLTAGE
0450	-X125.1	3AFE64674056	CONNECTOR STV S 9 SS	PIN HEADER
0460	-X11.1.2	3ABD00018097	CONNECTOR STV S 7 SB	
0470	-X11.1.2	3ABD00018098	CONNECTOR STV S 7 SS	
0480	-X109	3ABD00018095	CONNECTOR STV S 5 SB	
0490	-X109	3ABD00018096	CONNECTOR STV S 5 SS	
	-X50.1	3AFE64674081	CONNECTOR STV S 9 SB	
	-X50.2	3AFE64674081	CONNECTOR STV S 9 SB	
	-X50.3	3AFE64674081	CONNECTOR STV S 9 SB	



Doc. Identity	Rev	Lg	Kind	Reference Des.	Type	Title	Customer's Doc. Identity	File	Rev.
3ABDC080069-DWA/1	A		EFS2	=12, +12.1	Product circuit diagram	ACS800-107 Drive Unit Charging circuit Charging fuse switch 2xR8i	=12-1		
3ABDC080069-DWA/2	A		EFS2	=12, +12.1	Product circuit diagram	ACS800-107 Drive Unit 2xR8i Switch fuse Common motor terminals	=12-2		
3ABDC080069-DWA/10	A		EFS2	=12, +11.2	Product circuit diagram	ACS800-107 Drive Unit R8i-6xR8i UPS Switch fuse	=12-10		
3ABDC080069-DWA/12	A		EFS2	=12, +12.1	Product circuit diagram	ACS800-107 Drive Unit 2xR8i Fan unit	=12-12		
3ABDC080069-DWA/13	A		EFS2	=12, +11.2	Product circuit diagram	ACS800-107 Drive Unit R8i-3xR8i Fan control relays	=12-13		
3ABDC080069-DWA/17	A		EFS2	=12, +11.2	Product circuit diagram	ACS800-107 Drive Unit 2-12xR8i RMI0-02 CDP+NLMd+RDCO-0X+RAPI	=12-17		
3ABDC080069-DWA/18	A		EFS2	=12, +11.2	Product circuit diagram	ACS800-107 Drive Unit R8i-1-3xR8i -X2 OESA	=12-18		

Based on  
Replaces  
Replaced by  
Standard

Prepared 2/3/2008  
Approved 2/3/2008

Guohua Hui  
LI Shipping

Type code  
3ABDC080069-DWA-D

Rev. Ind.  
Lang.  
Sheet  
of

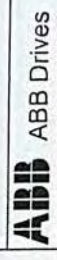


ABB Drives



Doc. Identity	Rev	Lg	Kind	Reference Des.	Type	Title	Customer's Doc. Identity	File	Rev.
3ABDC080069-DWA/19	A		EFS2	=12, +11.2	Product circuit diagram	ACS800-107 Drive Unit PPCS Branching unit APBU-44, -A415, 4 units		=12-19	
3ABDC080069-DWA/20	A		EFS2	=12, +12.2	Product circuit diagram	ACS800-107 Drive Unit Profibus Adapter RPBA-01, Option 1		=12-20	
3ABDC080069-DWA/21	A		EFS2	=12, +11.2	Product circuit diagram	ACS800-107 Drive Unit Pulse Encoder Interface RTAC-01, Option 2		=12-21	

Prepared 2/3/2008  
Approved 2/3/2008

Guohua Hui  
Li Shipping

Based on  
Replaces  
Replaced by  
Standard

Type code  
3ABDC080069-DWA-D

Rev. ind.  
Lang.  
Sheet  
of

2  
2

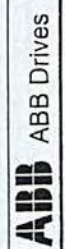
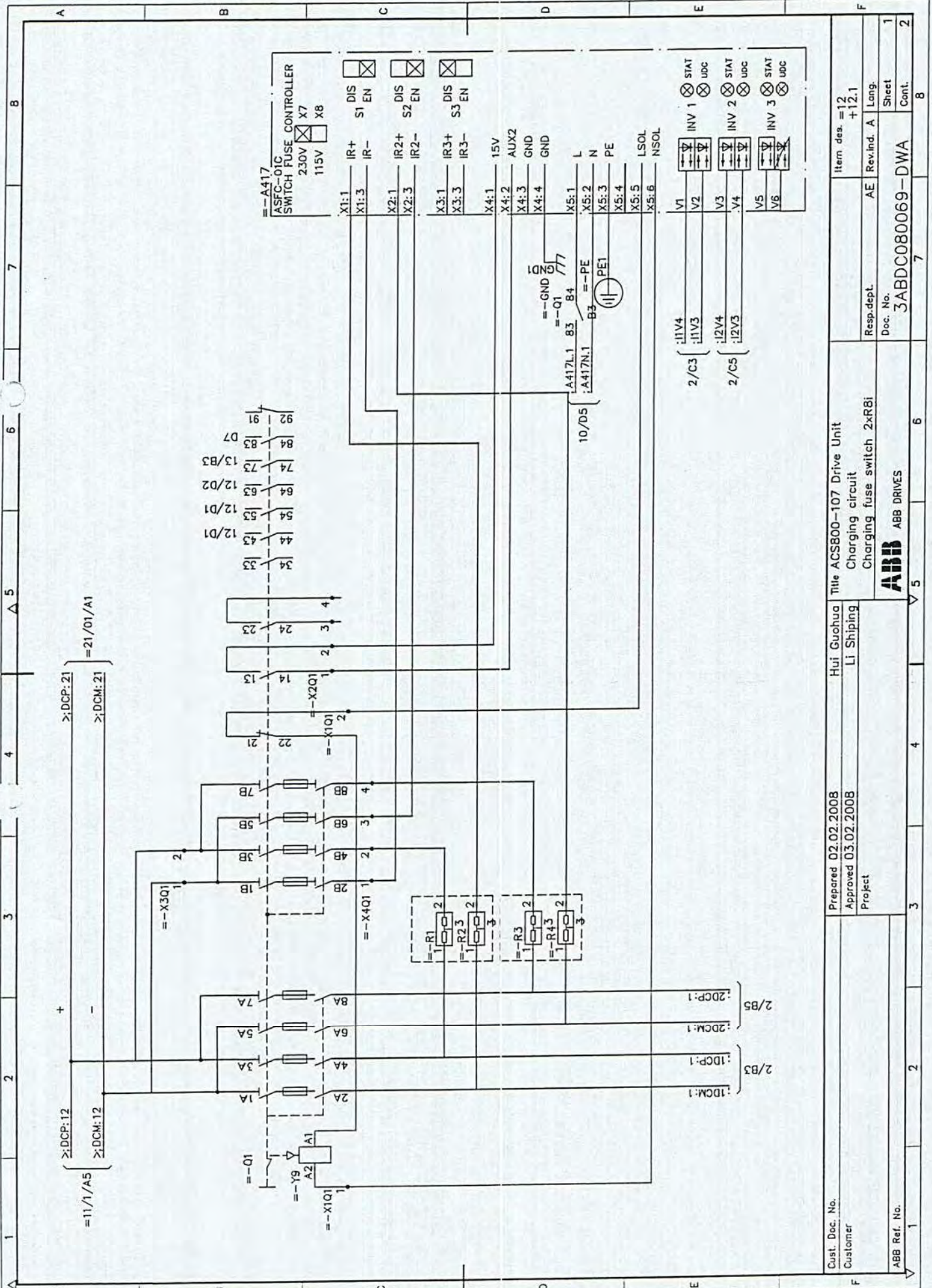


ABB Drives





Cust. Doc. No. ...  
 Customer ...

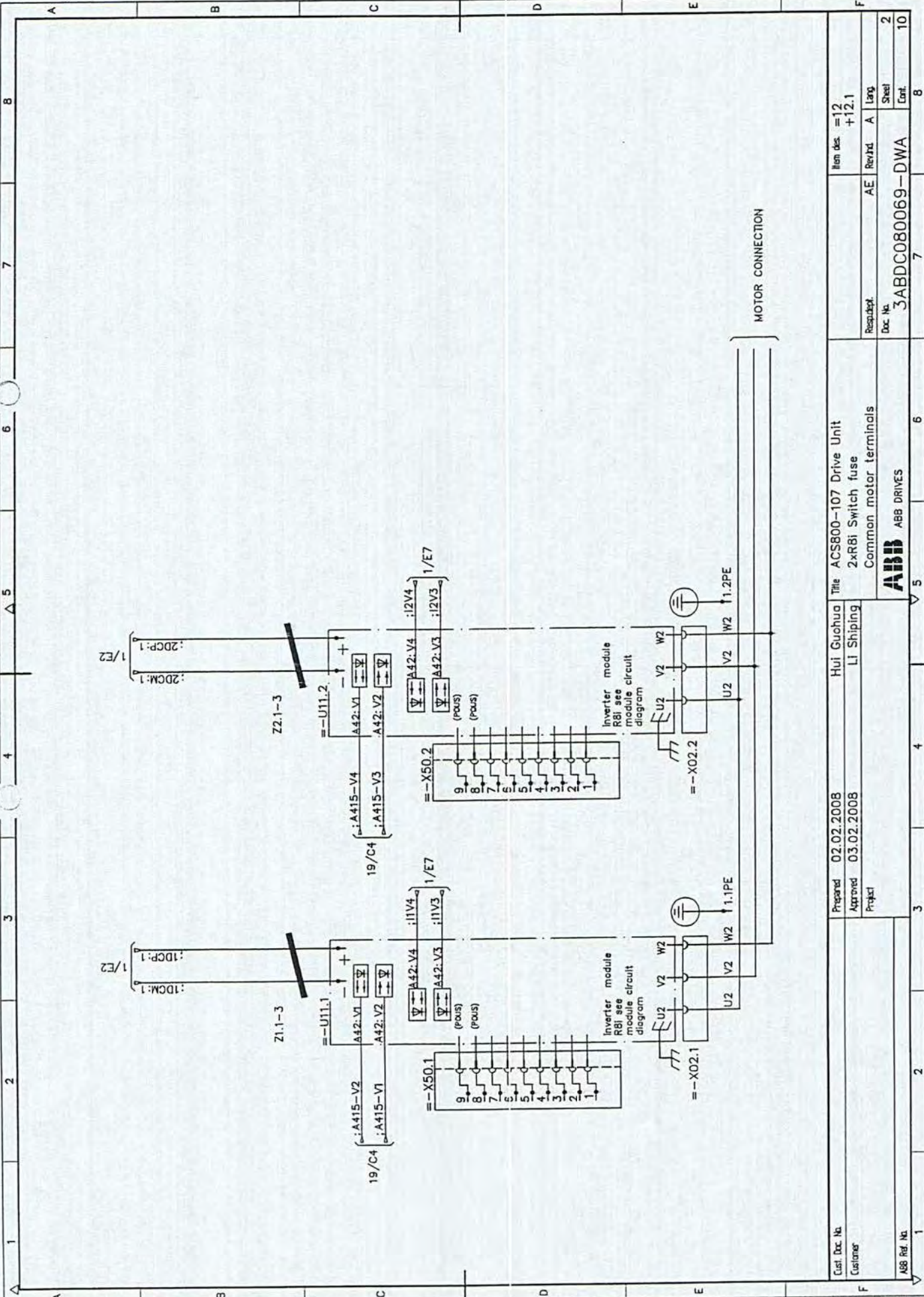
Prepared 02.02.2008  
 Approved 03.02.2008  
 Project

Hui Guohua  
 Li Shipping

Title ACS800-107 Drive Unit  
 Charging circuit  
 Charging fuse switch 2xR8i

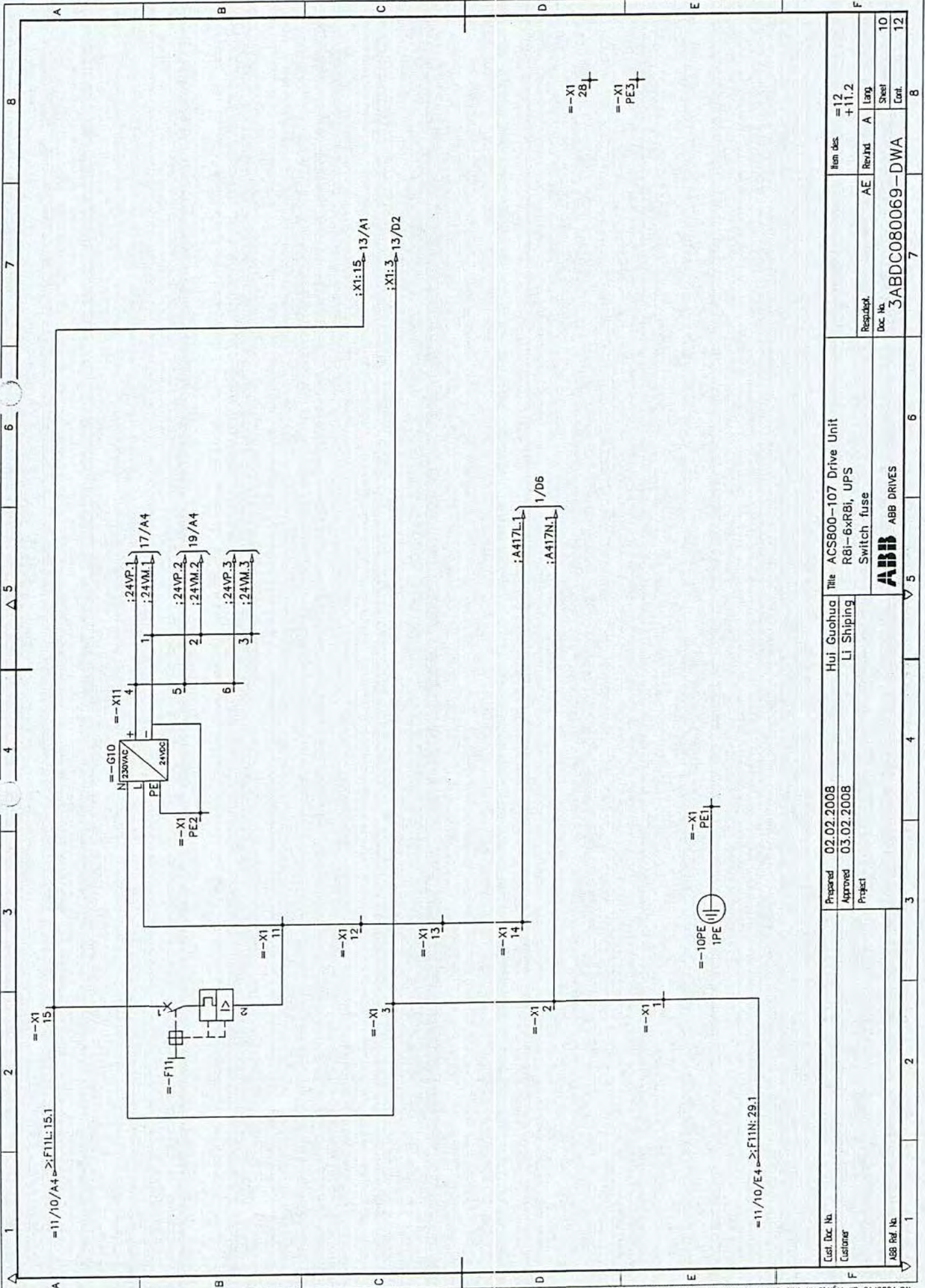
Item des. =12  
 +12.1  
 Resp.dept. AE Rev.ind. A Long.  
 Doc. No. 3ABDC080069-DWA  
 Sheet 1  
 Cont. 2





Ctrl. Doc. No.	Prepared 02.02.2008	Hui Guohua	Title ACS800-107 Drive Unit	Item des. =12	8
Customer	Approved 03.02.2008	LI Shipping	2xR6i Switch fuse	+12.1	
ABB Ref. No.	Project		Common motor terminals	Revizhd AE	7
			ABB DRIVES	Lang A	8
				Doc. No. 3ABDC080069-DWA	10
				Resubst. Doc. No.	2



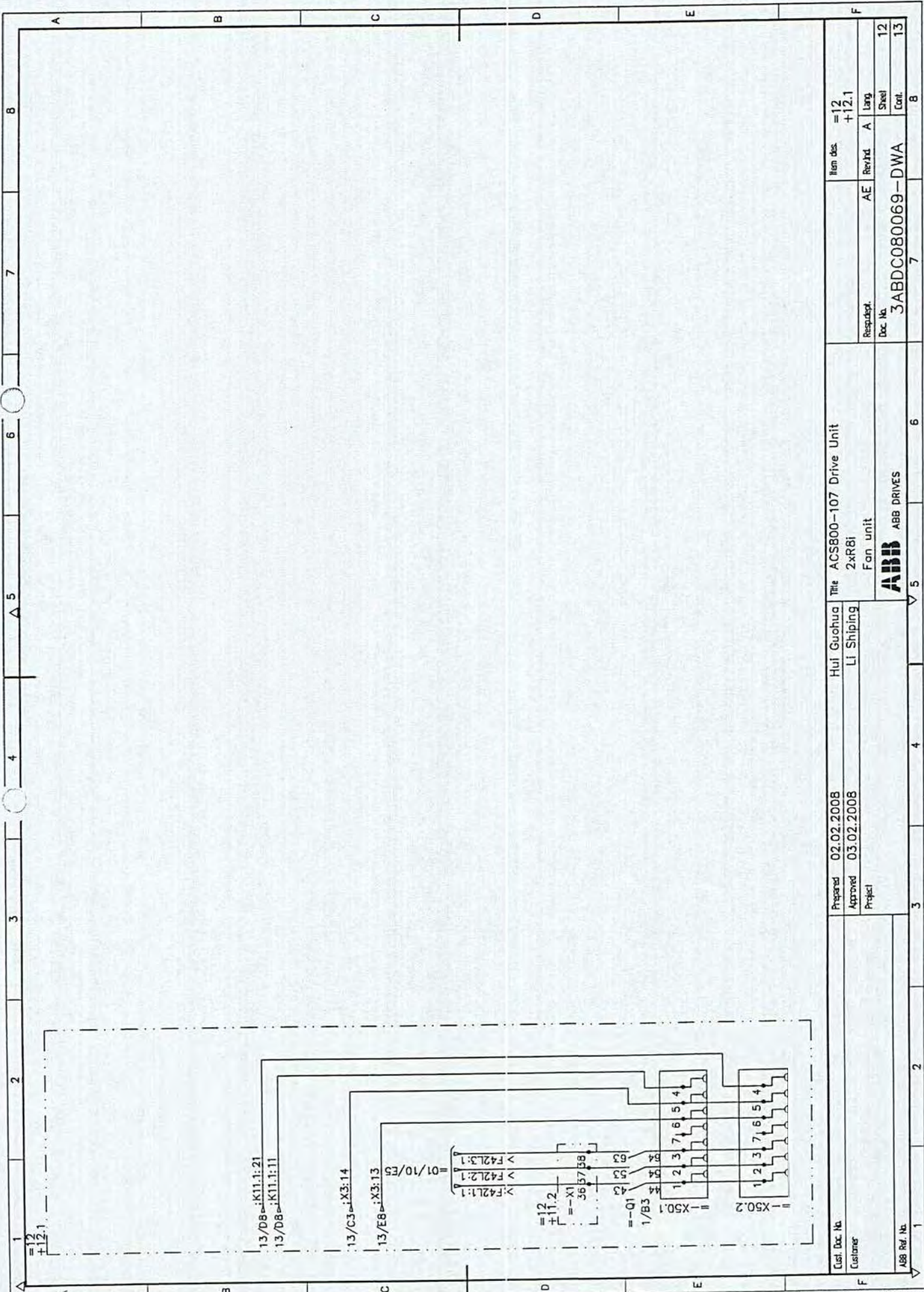


--X1  
28  
PE3

--X1  
1PE  
PE1

Conf. Doc. No.	02.02.2008	Prepared	Hui Guohua	Title	ACS800-107 Drive Unit	Item desc.	=12
Customer	Li Shipping	Approved	Li Shipping	R81-6XRBI, UPS	Switch fuse	AE Rev/Id	+11.2
ABB Ref. No.		Project		ABB DRIVES		Doc No.	3ABDC080069-DWA
						Resubst.	A
						Lang.	
						Sheet	10
						Cont.	12





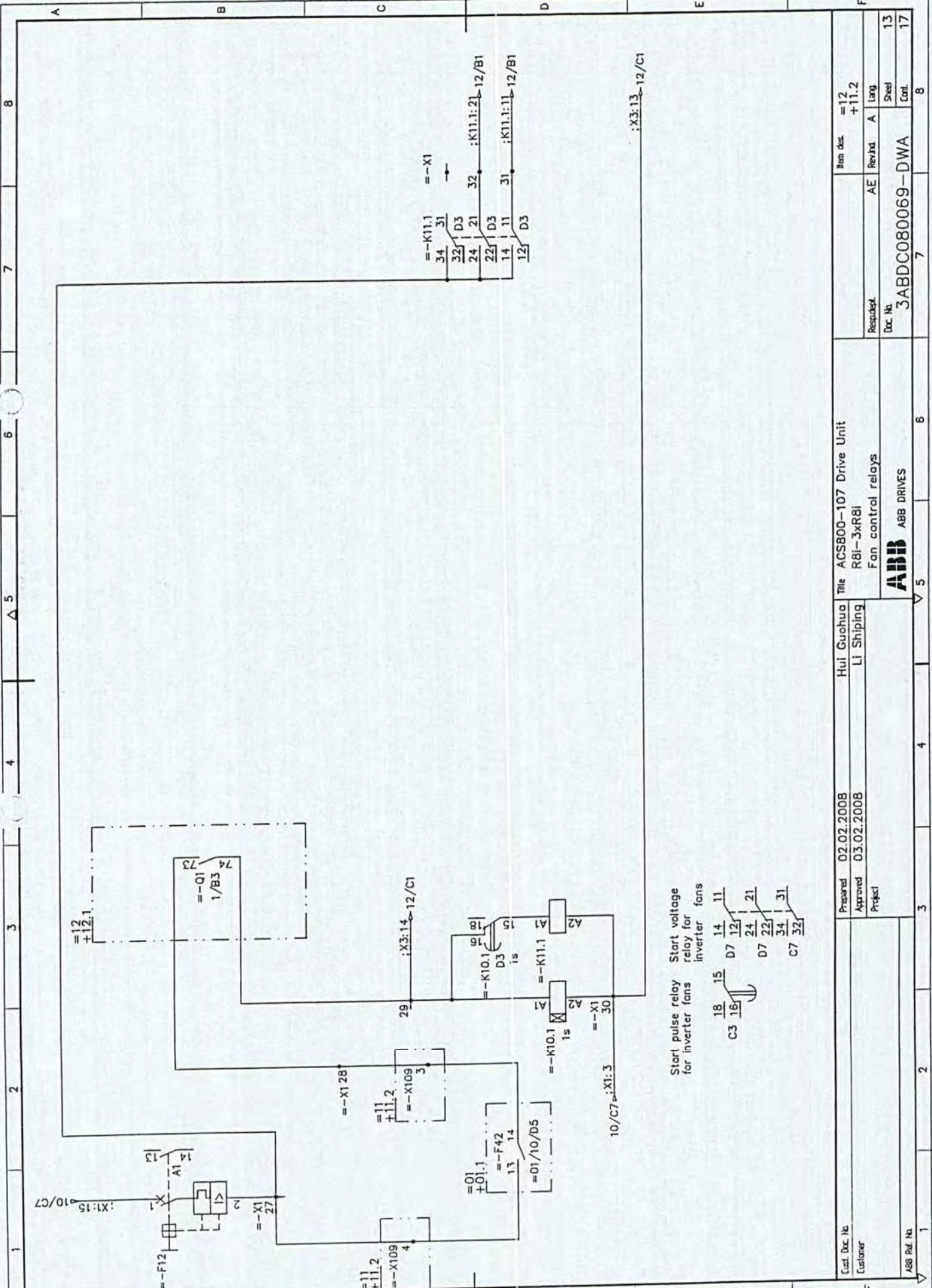
We reserve all rights in this document and in the information contained therein. Reproduction, use or disclosure to third parties without express authority is strictly forbidden. Copr. ABB Automation

Cust. Doc. No.	Customer	Prepared	02.02.2008	Hui Guohua	The ACS800-107 Drive Unit	Item des	=12
		Approved	03.02.2008	LI Shipping	2xR8i		+12.1
		Project			Fan unit	Resubst.	AE Rev'd A
						Doc No.	3ABDC080069-DWA
							Larg
							Steel
							Cont.
							12
							13
							8



ABB DRIVES





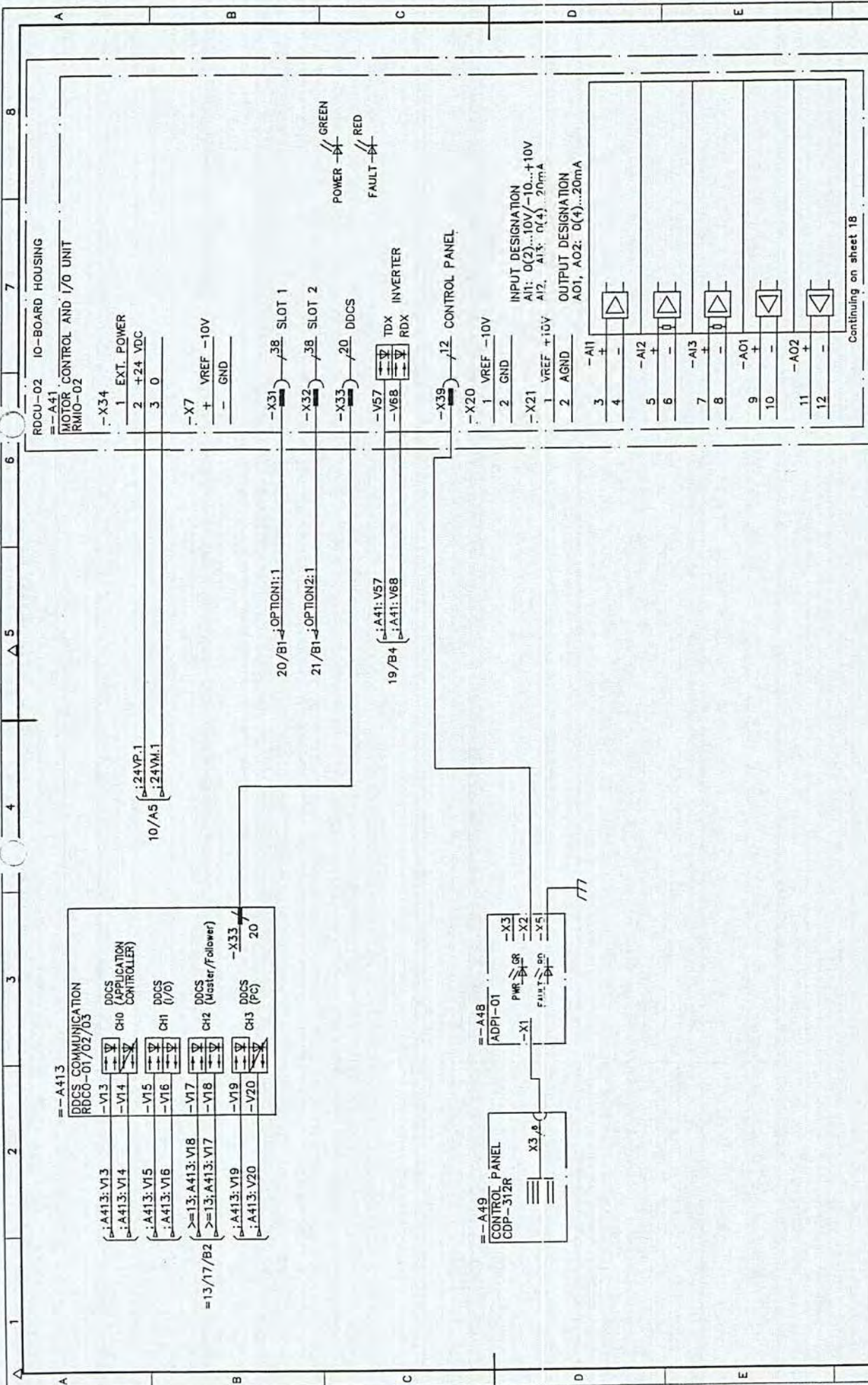
Start pulse relay for inverter fans

Start voltage relay for inverter fans

18 15 14 11  
 07 12 21  
 24 22 31  
 34 32

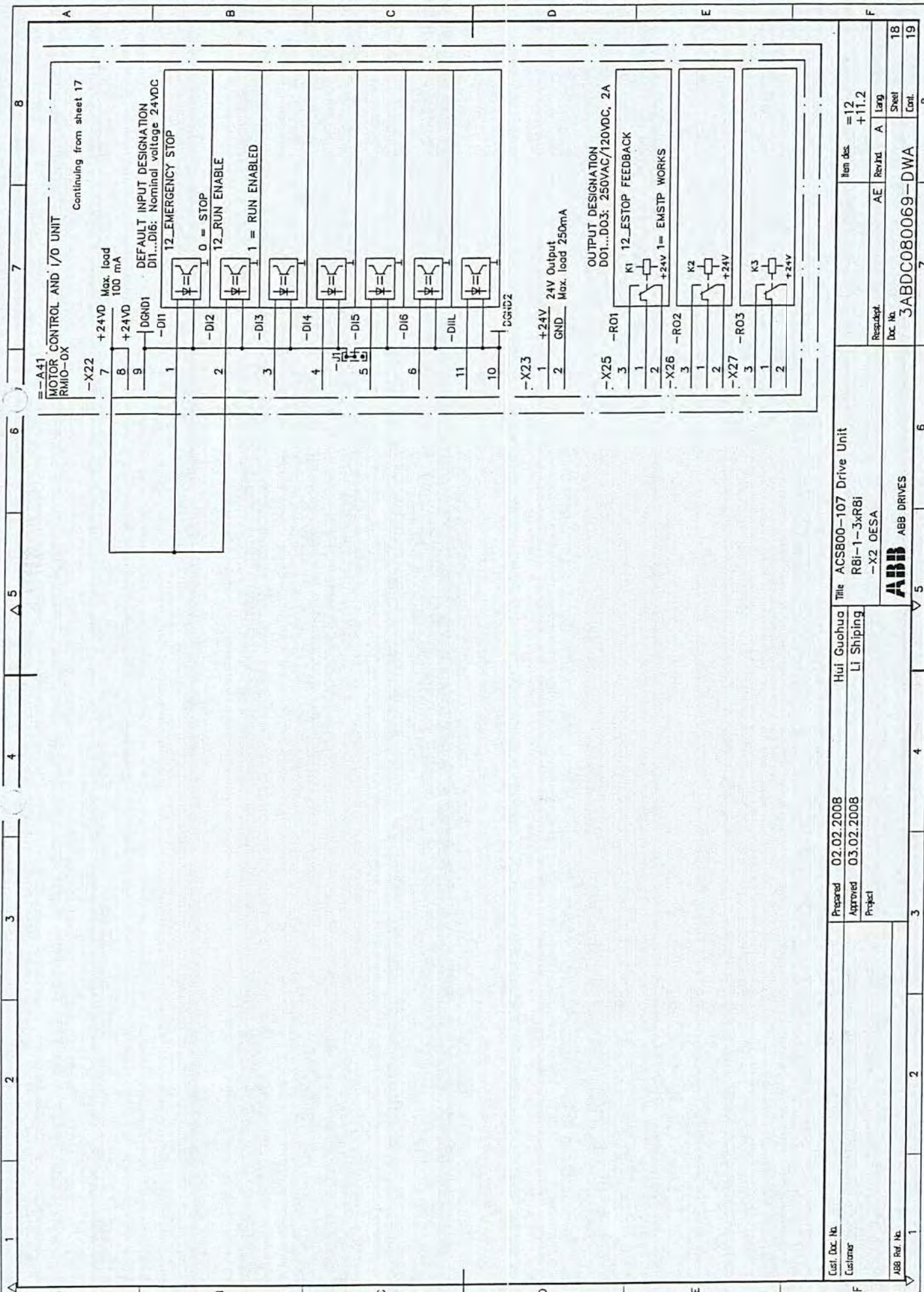
1	2	3	4	5	6	7	8
ABB Ref. No.				ABB DRIVES			
Customer				Fan control relays			
Prepared	02.02.2008						
Approved	03.02.2008						
Project							
Doc. No.							
Doc. No.				3ABDC080069-DWA			
Responsible							
AE							
Rev. No.							
Item des.							
=12							
+11.2							
Steel							
Conf.							





Item des.	=12	8
	+11.2	
Respatch.	AE	Revtd A
Doc. No.	3ABDC080069-DWA	
	17	18
	Steel	Cont.



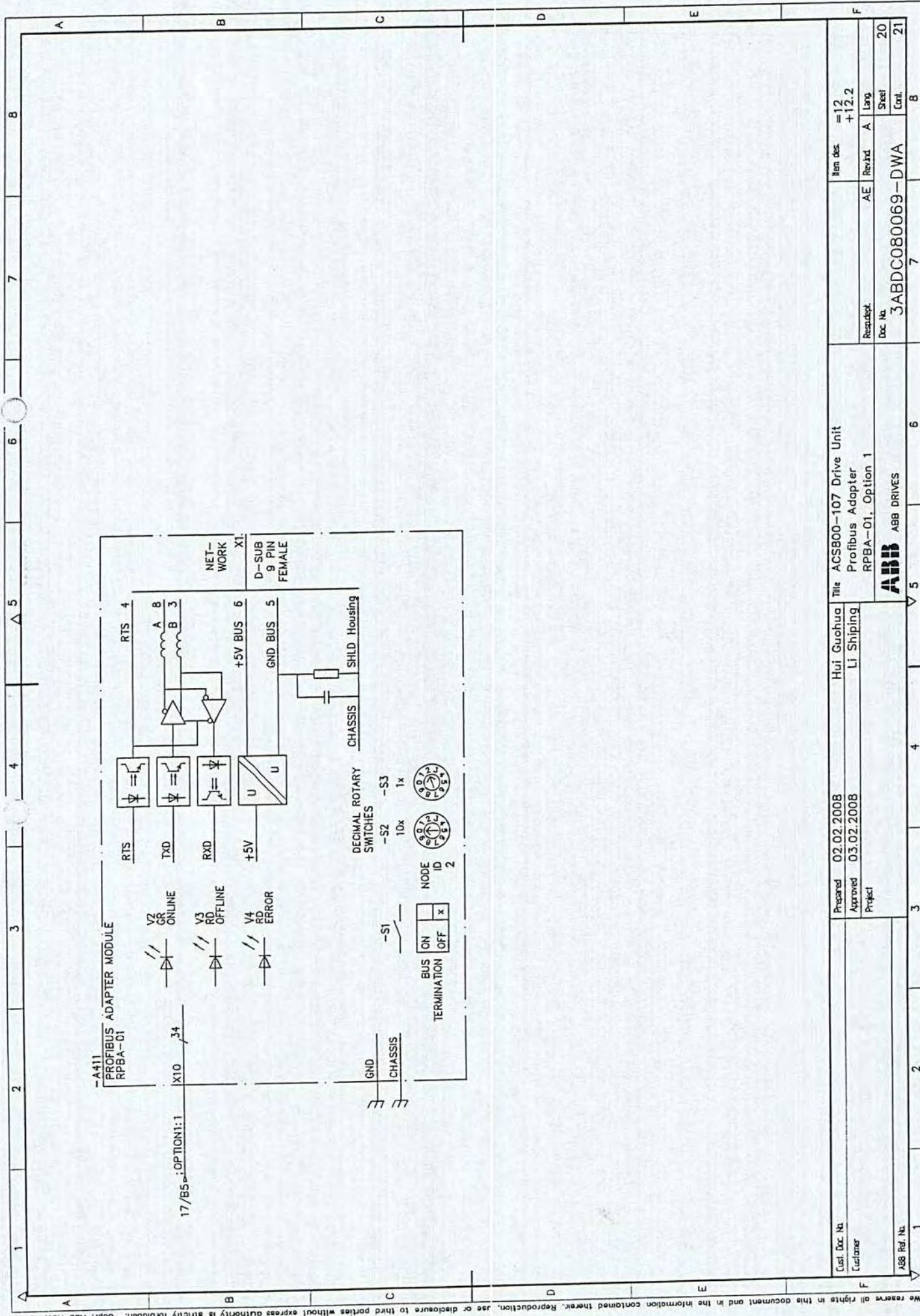


Customer	Hui Guohua	02.02.2008	Prepared	02.02.2008	03.02.2008	Approved	Project	Li Shipping	Hui Guohua	ACS800-107 Drive Unit	Item des.	=12
Customer	Li Shipping	03.02.2008	Approved	03.02.2008	03.02.2008	Approved	Project	Li Shipping	Hui Guohua	R8i-1-3xR8i	+11.2	18
Customer	Li Shipping	03.02.2008	Approved	03.02.2008	03.02.2008	Approved	Project	Li Shipping	Hui Guohua	-X2 OESA	A	19
Customer	Li Shipping	03.02.2008	Approved	03.02.2008	03.02.2008	Approved	Project	Li Shipping	Hui Guohua	ABB DRIVES	Doc No.	8
Customer	Li Shipping	03.02.2008	Approved	03.02.2008	03.02.2008	Approved	Project	Li Shipping	Hui Guohua	3ABDC080069-DWA	Rev/Ind	19
Customer	Li Shipping	03.02.2008	Approved	03.02.2008	03.02.2008	Approved	Project	Li Shipping	Hui Guohua	3ABDC080069-DWA	Large	18
Customer	Li Shipping	03.02.2008	Approved	03.02.2008	03.02.2008	Approved	Project	Li Shipping	Hui Guohua	3ABDC080069-DWA	Cont.	19



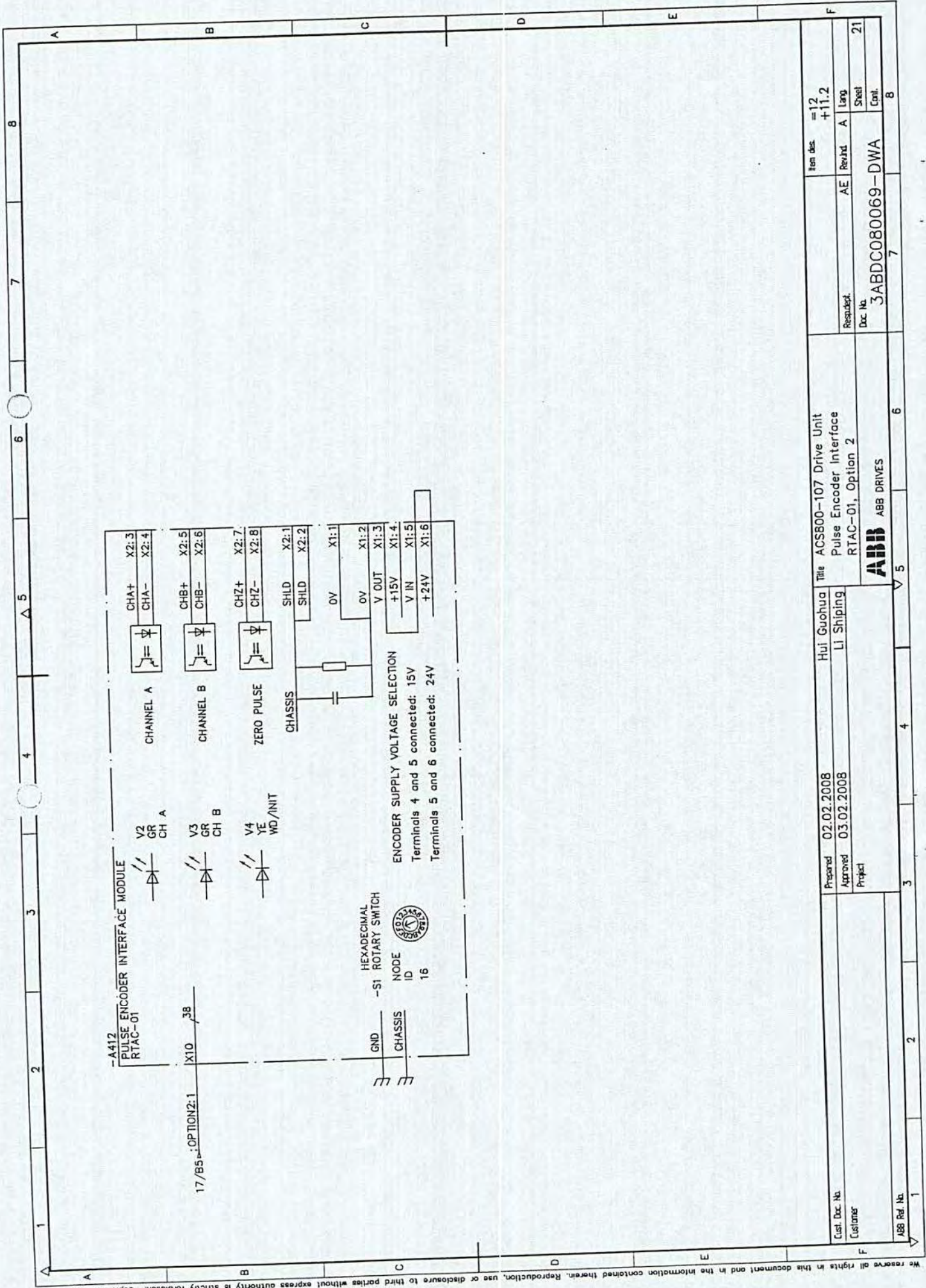






Cust. Doc. No. Customer	Prepared 02.02.2008	Hui Guohua	Title ACS800-107 Drive Unit	Item des. =12
ABB Ref. No.	Approved 03.02.2008	Li Shipping	Profibus Adapter RPBA-01, Option 1	+12.2
	Project		Resubst. Doc. No.	AE Rev.Ind. A Lang
			3ABDC080069-DWA	20
				21





Prepared	02.02.2008	Hui Guohua	Title	ACS800-107 Drive Unit	Item des	=12
Approved	03.02.2008	Li Shipping		Pulse Encoder Interface	+11.2	
Project				RTAC-01, Option 2	AE	Rev'd A
Customer					Doc No.	Lang
ABB Ref. No.					3ABDC080069-DWA	Sheet
					7	21
						Cont.
						B



To Designation			Terminal bar			From Designation			Rev. No.							
Loc.	Fun.	Prod	Term	Cable/Wire	Core	L	Designation	Term		L	A	Core	Loc.	Fun.	Prod.	Term
+11.2	=11	=11-X25	204/2	H05V-K/BU/1.0			=12-X1	1	A	/						3ABDC080069-DWA/10
+11.2	=12	=12-X1	30/3	H05V-K/BK/1.0		B	=12-X1	2	A	/		+12.1	=12	=12-A417	X5.2	3ABDC080069-DWA/10
				/		B	=12-X1	3				+11.2	=12	=12-G10	N	
				/		C	=12-X1	11				+11.2	=12	=12-F11	2	3ABDC080069-DWA/10
				/		C	=12-X1	11				+11.2	=12	=12-G10	L	3ABDC080069-DWA/10
				/		C	=12-X1	12	D	/						3ABDC080069-DWA/10
				/		E	=12-X1	13	D	/						3ABDC080069-DWA/10
				/		E	=12-X1	14				+12.1	=12	=12-Q1	83	
+11.2	=12	=12-F12		H07V-K/BK/6.0			=12-X1	15				+11.2	=11	=11-X25	214/2	3ABDC080069-DWA/10
+01.1	=01	=01-F42	13	H05V-K/BK/1.0			=12-X1	15				+11.2	=12	=12-F11	1	3ABDC080069-DWA/10
				H05V-K/BK/1.0			=12-X1	27				+11.2	=12	=12-K11.1	14	3ABDC080069-DWA/13
+11.2	=11	=11-X109	3/2	H05V-K/BK/1.0			=12-X1	27				+11.2	=12	=12-F12	2	3ABDC080069-DWA/13
+11.2	=12	=12-K10.1	A1	H05V-K/BK/1.0			=12-X1	29		/		+12.1	=12	=12-Q1	73	3ABDC080069-DWA/13
+12.1	=12	=12-X50.1	5/2	H05V-K/BK/1.0			=12-X1	29				+12.1	=12	=12-Q1	74	
+11.2	=12	=12-K10.1	A2	H05V-K/BK/1.0			=12-X1	30				+11.2	=12	=12-X1	3/4	3ABDC080069-DWA/13
+11.2	=12	=12-K11.1	A2	H05V-K/BK/1.0			=12-X1	30				+12.1	=12	=12-X50.1	6/2	3ABDC080069-DWA/13
+11.2	=12	=12-K11.1	11	H05V-K/BK/1.0			=12-X1	31				+12.1	=12	=12-X50.1	4/2	3ABDC080069-DWA/13
+11.2	=12	=12-K11.1	21	H05V-K/BK/1.0			=12-X1	32				+12.1	=12	=12-X50.2	4/2	3ABDC080069-DWA/13
+11.2	=11	=11-X125.1	4/1	H05V-K/BK/1.0			=12-X1	36				+12.1	=12	=12-Q1	43	3ABDC080069-DWA/12
+11.2	=11	=11-X125.1	5/1	H05V-K/BK/1.0			=12-X1	37				+12.1	=12	=12-Q1	53	3ABDC080069-DWA/12
+11.2	=11	=11-X125.1	6/1	H05V-K/BK/1.0			=12-X1	38				+12.1	=12	=12-Q1	63	3ABDC080069-DWA/12
				/			=12-X1	PE1				+11.2	=12	=12-10PE	1PE	3ABDC080069-DWA/10

Cust. Doc. No.	Guohua Hull Title	Terminal Report	Item des.
Customer	LI Shipping		
Prepared 2/3/2008	Approved 2/3/2008	Resp. dept.	Rev. ind. A
Project		Doc. No.	Lang. A
ABB Ref. No.	ABB Drives	3ABDC080069-DWA-X	Sheet 1 of 3



To Designation				Terminal bar				From Designation				Rev. No.					
Loc.	Fun.	Prod	Term	Cable/Wire	Core	L	Designation	Term	L	Cable/Wire	Core		Loc.	Fun.	Prod.	Term	Document ref.
+11.2	=12	=12-G10	-	H05V-K/GNVE/1.0			=12-X1	PE2		H07V-K/GNVE/2.5		+11.2	=12	=12-G10	PE		
				/			=12-X1	PE3		/							
				/			=12-X1			/							
+12.1	=12	=12-A417	X5:6	H05V-K/BK/0.75			=12-X1Q1	1		/							
+12.1	=12	=12-A417	X5:5	H05V-K/BK/0.75			=12-X1Q1	2		/							
+12.1	=12	=12-A417	X4:2	H05V-K/BK/0.75			=12-X2Q1	1		/							
+12.1	=12	=12-A417	X4:1	H05V-K/BK/0.75			=12-X2Q1	2		/							
				/			=12-X2Q1	3		/							
				/			=12-X2Q1	4		/							
+12.1	=12	=12-Q1	1A	H3RR-K/B/2_5			=12-X3Q1	1		/							
+12.1	=12	=12-Q1	3A	H3RR-K/B/2_5			=12-X3Q1	2		/							
+12.1	=12	=12-A417	X1:3	H07V-K/BK/2.5			=12-X4Q1	1		/							
+12.1	=12	=12-R1	2	H07V-K/BK/2.5			=12-X4Q1	2		/							
+12.1	=12	=12-A417	X2:3	H07V-K/BK/2.5			=12-X4Q1	3		/							
+12.1	=12	=12-R3	2	H07V-K/BK/2.5			=12-X4Q1	4		/							
+11.2	=12	=12-A41.X34	3/2	/			=12-X11	1	F	/		+11.2	=12	=12-G10	-	3ABDC080069-DWA/10	
				/			G	2	F	/		+11.2	=12	=12-A415	X1:2	3ABDC080069-DWA/10	
				/			G	3		/							
+11.2	=12	=12-A41.X34	2/2	/			=12-X11	4	H	/		+11.2	=12	=12-G10	+	3ABDC080069-DWA/10	
				/			I	5	H	/		+11.2	=12	=12-A415	X1:1	3ABDC080069-DWA/10	
				/			I	6		/							
+12.1	=12	=12-Q1	44	H05V-K/BK/1.0			=12-X50.1	1		/		+12.1	=12	=12-X50.2	1/2	3ABDC080069-DWA/12	
+12.1	=12	=12-Q1	54	H05V-K/BK/1.0			=12-X50.1	2		/		+12.1	=12	=12-X50.2	2/2	3ABDC080069-DWA/12	

Cust. Doc. No.		Prepared 2/3/2008		Guohua Hui Title		Terminal Report		Item des.	
Customer		Approved 2/3/2008		LI Shipping		Resp. dept.		Rev. ind. A	
		Project				Doc. No.		3ABDC080069-DWA-X	
ABB Ref. No.				ABB		ABB Drives		Sheet of	
								2	
								3	



To Designation		Terminal bar		From Designation		Rev. No.				
Loc.	Fun.	Prod	Term	Cable/Wire	Core		Loc.	Fun.	Prod.	Term
+12.1	=12	=12-Q1	64	H05V-K/BK/1.0		+12.1	=12	=12-X50.2	3/2	3ABDC080069-DWA/12
+11.2	=12	=12-X1	31/1	H05V-K/BK/1.0						
+11.2	=12	=12-X1	29/2	H05V-K/BK/1.0		+12.1	=12	=12-X50.2	5/2	3ABDC080069-DWA/12
+11.2	=12	=12-X1	30/1	H05V-K/BK/1.0		+12.1	=12	=12-X50.2	6/2	3ABDC080069-DWA/12
				/						
+12.1	=12	=12-X50.1	1/1	H05V-K/BK/1.0						
+12.1	=12	=12-X50.1	2/1	H05V-K/BK/1.0						
+12.1	=12	=12-X50.1	3/1	H05V-K/BK/1.0						
+11.2	=12	=12-X1	32/1	H05V-K/BK/1.0						
+12.1	=12	=12-X50.1	5/1	H05V-K/BK/1.0						
+12.1	=12	=12-X50.1	6/1	H05V-K/BK/1.0						
				/						

Cust. Doc. No	Prepared	2/3/2008	Guohua Hui	Terminal Report	Item des.
Customer	Approved	2/3/2008	Li Shipping	Resp. dept.	Rev. Ind. A
	Project			Doc. No.	3ABDC080069-DWA-X
ABB Ref. No			ABB	ABB Drives	
					Sheet of



Based on	Prepared	Hui Guohua	Type	3ABDC080069DU01002
Resp. dept.	Approved	Li Shipping	Unit	Fun.=
Cust. Doc. No	<b>ABB</b> ABB Drive		Project	Loc.+
ABB Ref. No	Component number		Customer	Lang. EN
Item Number	Sort String	Comp. Qty	Description and Text	Technical Data
0010	-Q1	1	FUSE SWITCH	630A, 1000V, 4-NAP.
0020	(-Q1)	4	HRC FUSE LINK	1000A, 1000V/900A, 1000V
0030	(-Q1)	4	CHARGING FUSE	1000V, 20A
0040	-R1	1	POWER RESISTOR	ZRF 30X165 SIK 33R
0050	-R2	1	POWER RESISTOR	ZRF 30X165 SIK 33R
0060	-R3	1	POWER RESISTOR	ZRF 30X165 SIK 33R
0070	-R4	1	POWER RESISTOR	ZRF 30X165 SIK 33R
0080	-A417	1	CHAR. CTRL BOARD	72 X 245
0090	-U11.1	1	ACS800-104-0580-7+E205+V991	R81, 690V 580KVA+DU/DT
0100	-U11.2	1	ACS800-104-0580-7+E205+V991	R81, 690V 580KVA+DU/DT
0110	-X02.1	1	CONNECT. PLUG KI X02.1-2	INVERTER CONNECTOR
0120	-X02.2	1	CONNECT. PLUG KI X02.1-2	INVERTER CONNECTOR
0130	-Z1.1-3	3	COMM. MODE CHOKE	500F/55UF/102X76X25
0140	-Z2.1-3	3	COMM. MODE CHOKE	500F/55UF/102X76X25
0150	-G10	1	POWER SUPPLY	24V 3.2A
0160	-F11	1	PROTECTION SWITCH	4A, 230V/400V 6KA
0170	-A49	1	CONTROL PANEL	4*20CHARS, 16 BUTTONS
0180	-A48	1	FILTERING BOARD	DIAGNOSTICS AND INTERFACE
0190	(-A48)	1	PANEL PLUG CONN	PHONE CONNECTOR L=34MM
0200	(-A48)	1	GROUNDING WIRE	130 X 266MM
0210	(-A48)	1	CDP PANEL	FOR CDP PANEL
0220	(-A48)	1	EMC SHIELD	3M, CROSS, RMTIO/CDP312R
0230	(-A48)	1	FLAT CABLE	RMTIO-02
0240	-A41	1	DRIVE CTRL UNIT	4CH
0250	-A415	1	BRANCHING UNIT	PROFIBUS DP ADAPTER
0260	-A411	1	DATA INTERFACE	SYSTEM SOFTWARE
0270	-N	1	SOFTWARE	
0280	-A412	1	PULSE ENC. INTERF RTAC-01	
0010		1	PULSE ENC. INTERF RTAC-01	
0290	-A413	1	DDCS COMMUN. OPTI RDCO-02C	
0300	-X1	1	TERMINAL BLOCK	X1(2)
0310	-X11	1	TERMINAL BLOCK	X11: 1-6
0320	-K10.1	1	TIME RELAY	O. 05S-300H



Based on	Prepared	Hui Guohua	Type	3ABDC080069DU01002
Resp. dept. AE	Approved	LI Shipping	Unit	Fun.=
Cust. Doc. No		<b>ABB</b> ABB Drive	Project	Loc.+
ABB Ref. No			Customer	Lang. EN
Item Number	Sort String	Component number	Description and Text	Technical Data
0330	-K11.1	3ABD00018091	RELAY KIT CR-M230AC3L+BASE+RC	230VAC 3CO 10A
0010		3ABD00018021	RELAY CR-M230AC3L	230 VAC 3 C/O
0020		3ABD00018026	RELAY SOCKET CR-M3SS	STANDARD SOCKET FOR 3 C/O
0030		3ABD00018025	RELAY RC ELEMENT CR-P/M 52C	RC ELEMENT, 110-240 VAC
0040		3ABD00018028	RELAY HOLDER CR-MH	HOLDER FOR CR-M SOCKET
0340	-F12	3AFE3507766	PROTECTION SWITCH S251S-K4	4A, 230V/400V 6KA
0350	(-F12)	3ABD00012170	AUXILIARY CONTACT S250-H11	GH S250 1916 R0011
	-X50.1	3AFE64674081	CONNECTOR STV S 9 SB	
	-X50.2	3AFE64674081	CONNECTOR STV S 9 SB	



Doc. Identity	Rev	Lg	Kind	Reference Des.	Type	Title	Customer's Doc. Identity	File	Rev.
3ABDC080069-BU1/01	A		EFS2	=21, +21.1	Product circuit diagram	ACS800 607 Braking Chopper (690V) Unit 1	=21-01		
3ABDC080069-BU1/02	A		EFS2	=21, +21.1	Product circuit diagram	ACS800 607 Braking Chopper (690V) Unit 2	=21-02		
3ABDC080069-BU1/03	A		EFS2	=21, +21.1	Product circuit diagram	ACS800 607 Braking Chopper (690V) Unit 3	=21-03		

Based on  
Replaces  
Replaced by  
Standard

Prepared 2/3/2008  
Approved 2/3/2008

Guohua Hui  
LI Shipping

**ABB** ABB Drives

Type code  
Rev. Ind.

3ABDC080069-BU1-D

Lang.  
Sheet  
of